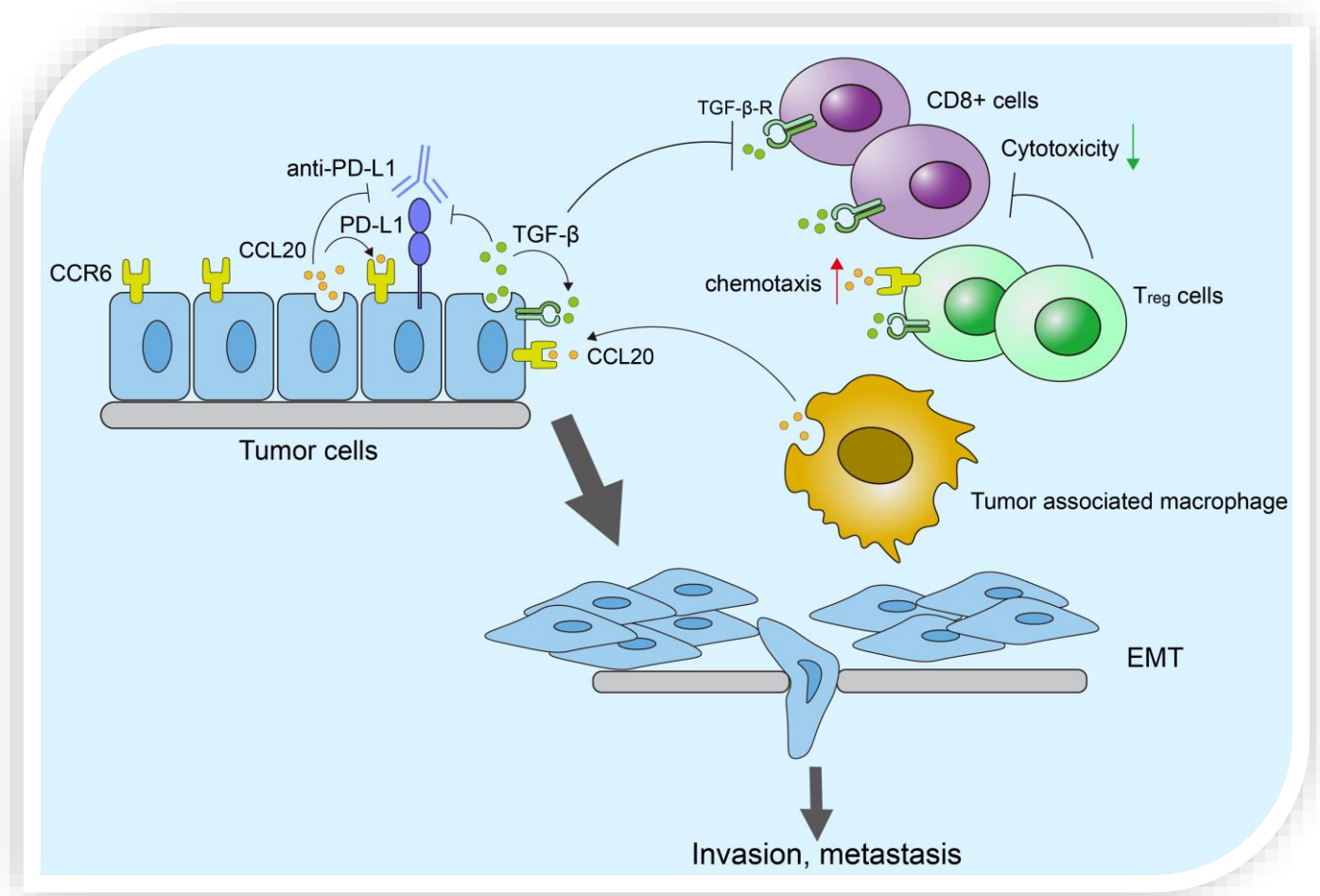


International Journal of Biological Sciences



COVER FEATURE: CCL20 promotes lung adenocarcinoma progression by driving epithelial-mesenchymal transition

Tao Fan, Shuofeng Li, Chu Xiao, He Tian, Yujia Zheng, Yu Liu, Chunxiang Li, Jie He



ISSN 1449-2288



9 771 449 228003



IVYSPRING
INTERNATIONAL PUBLISHER