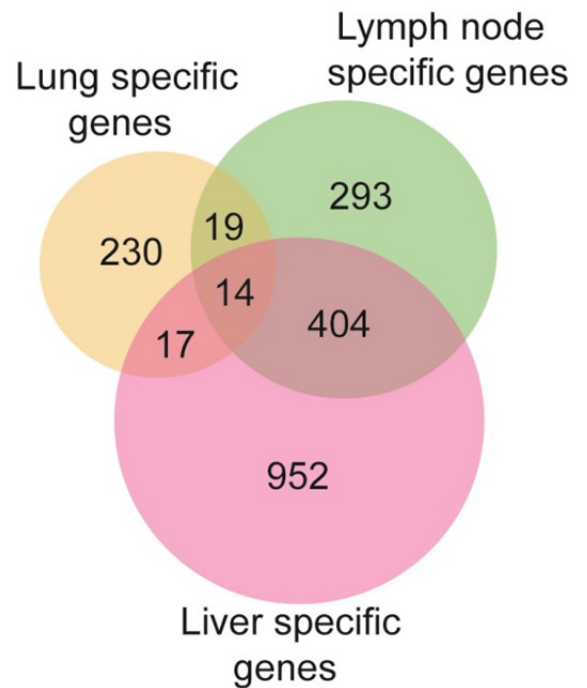
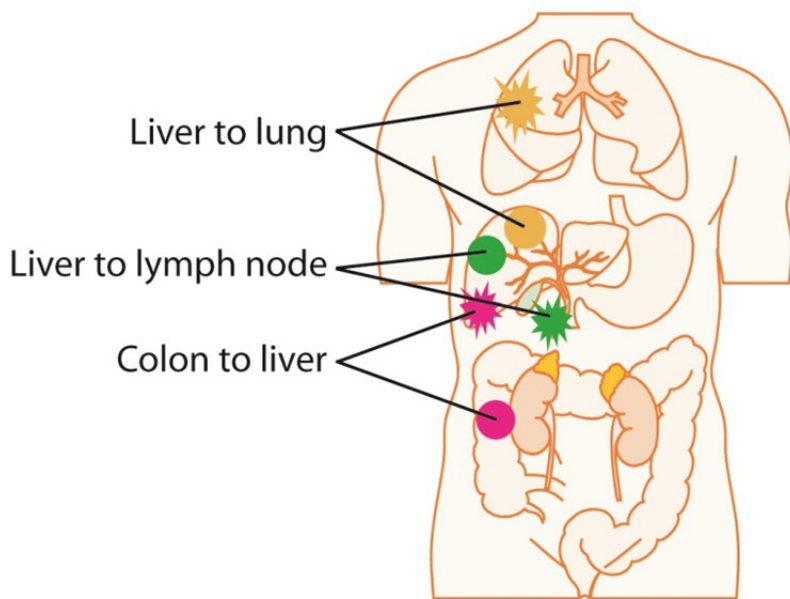


# International Journal of Biological Sciences

## Cancer cells en route to metastasis



### **COVER FEATURE**

Integrative Genomic and Transcriptomic Characterization of Matched Primary and Metastatic Liver and Colorectal Carcinoma

Stephanie Roessler et al

ISSN 1449-2288



9 771449 228003



IVYSPRING  
INTERNATIONAL PUBLISHER