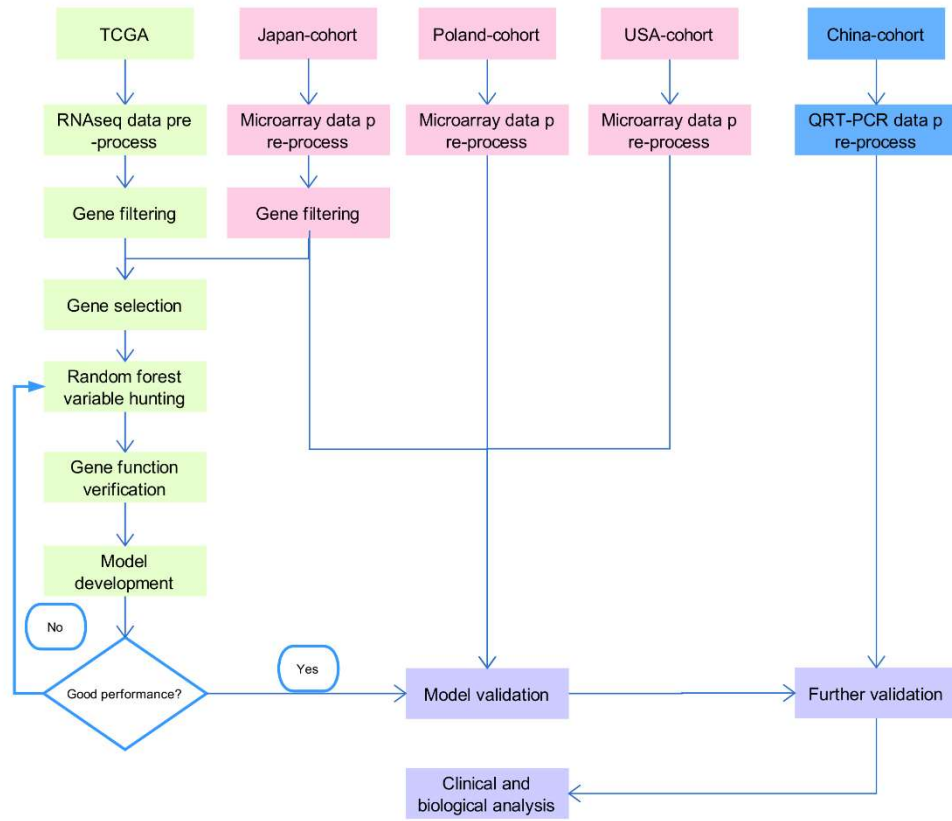


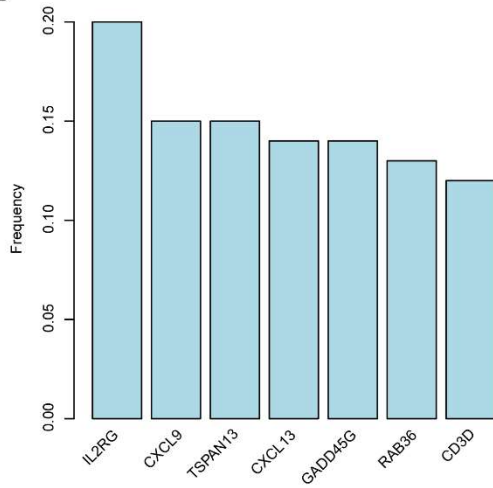
Figure S1

A. Workflow of this work; B. Frequency of features (genes) in random forest variable hunting;
C. Coefficients of genes in calculating the risk score.

A



B



C

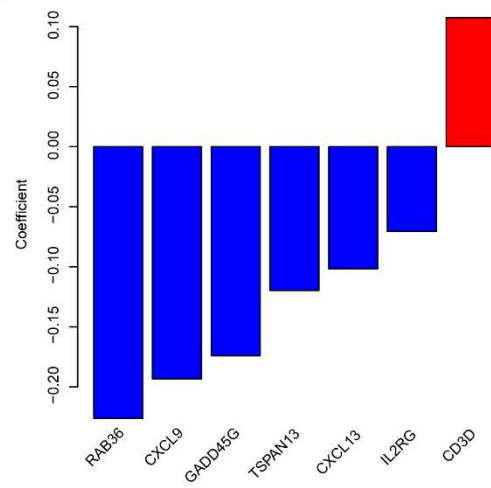


Figure S2

The risk score distribution and difference in BRCA1/2 mutation group and BRCA1/2 wild type group.

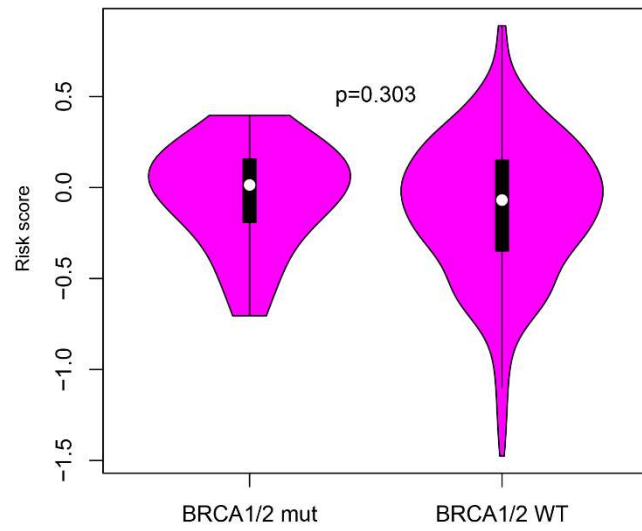


Fig. S3. Robustness of risk score in treatment subgroups.

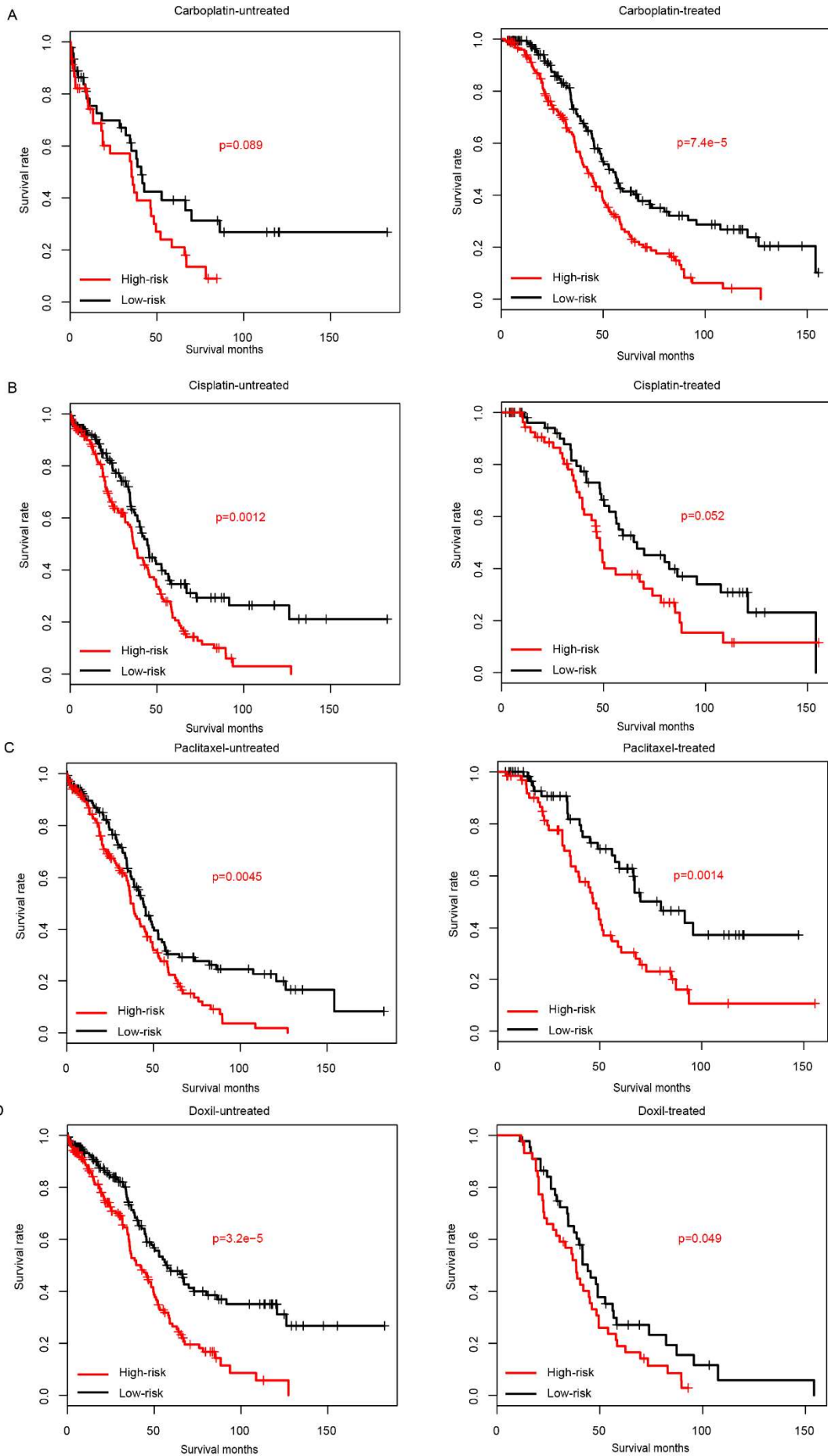


Figure S4.

Progression-free survival difference is significant between high/low-risk, in both platinum-sensitive (A) and platinum-non-sensitive (B) group.

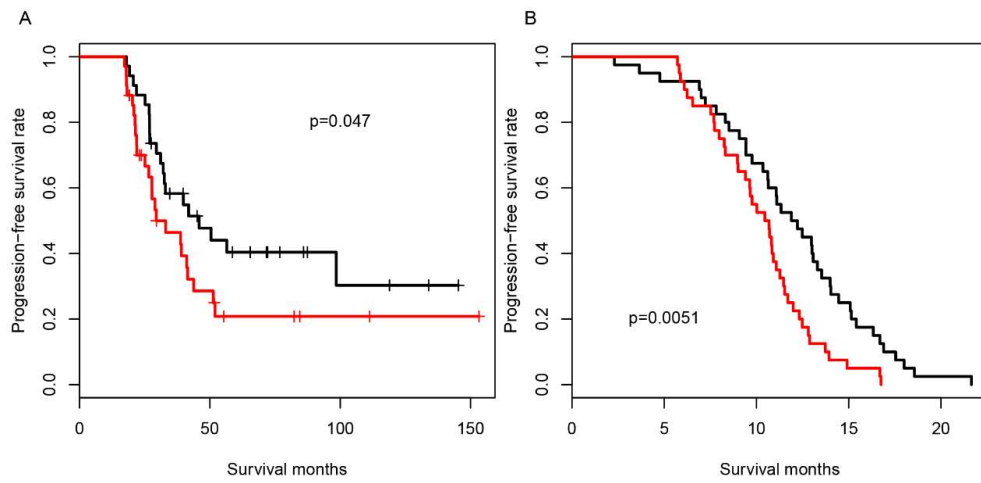


Figure S5.

The knocking down efficiency of siRNAs for the four genes.

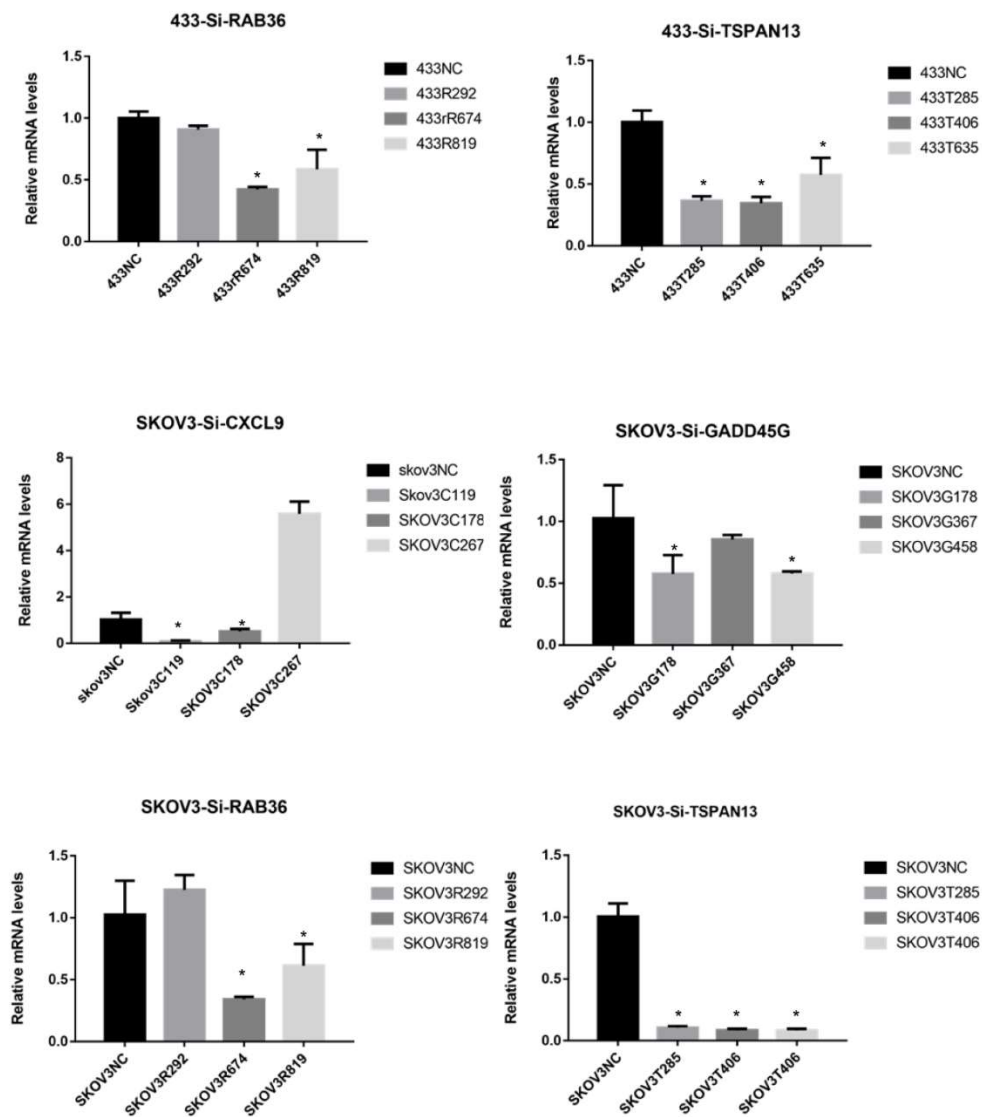


Table S1.

Detailed survival information of samples in China-cohort.

Sample	Age	Resudual	PFS	PFS_IND	OS	OS_IND
O11008	72	0	83	0	83	0
O11019	53	0	81	0	81	0
O11020	60	0	34	1	81	0
O11021	55	0	11	1	46	1
O11022	56	1	81	0	81	0
O11030	56	0	6	1	67	1
O11038	63	0	24	1	29	1
O11052	49	0	22	1	37	1
O11063	70	1	33	1	66	1
O11091	51	1	29	1	78	0
O11121	45	0	29	1	65	1
O11137	63	0	76	0	76	0
O11171	37	0	50	0	50	0
O11203	59	0	43	1	43	1
O11225	54	1	33	1	34	0
O11241	54	1	24	1	27	0
O11248	68	0	74	0	74	0
O11255	54	0	15	1	17	1
O120011	37	0	17	1	28	1
O120014	45	1	0	0	0	0
O120037	53	0	70	0	70	0
O120068	50	0	21	1	69	0
O120074	59	0	35	0	35	0
O120088	58	1	20	1	48	1
O120095	62	1	68	0	68	0
O120101	48	0	14	1	23	0
O120114	59	1	13	1	36	1
O120116	64	0	56	1	59	1
O120145	43	0	7	1	18	1
O120148	47	1	11	1	30	1
O120158	62	0	9	1	17	1
O120174	59	0	14	1	61	1
O120175	42	1	11	1	12	0
O120181	60	0	8	1	20	1
O120184	49	1	2	1	7	1
O120215	47	0	4	1	23	1
O120247	45	0	13	1	64	0
O120258	43	0	57	1	63	1
O120264	46	1	13	1	40	1
O120272	49	0	13	1	35	1
O120281	60	0	62	0	62	0

O120290	68	0	18	1	18	1
O120323	69	0	13	1	23	1
O130001	60	0	17	1	18	0
O130003	62	1	59	0	59	0
O130005	43	0	7	1	13	1
O130009	43	0	10	1	12	1
O130023	56	1	26	1	59	0
O130040	42	0	8	1	57	0
O130043	52	0	24	1	30	0
O130047	65	1	57	0	57	0
O130059	62	0	3	1	42	1
O130063	39	0	29	1	56	0
O130070	62	0	56	0	56	0
O130075	51	0	56	0	56	0
O130089	70	0	56	0	56	0
O130097	41	0	31	1	55	0
O130099	50	0	13	1	55	0
O130101	47	0	25	1	55	0
O130104	41	1	11	1	31	1
O130105	54	0	29	1	29	1
O130108	45	0	55	0	55	0
O130124	68	0	8	1	13	1
O130126	64	1	41	1	54	0
O130132	64	0	54	0	54	0
O130134	44	0	21	1	54	0
O130145	55	0	36	1	54	0
O130152	57	1	24	1	53	0
O130176	62	0	53	0	53	0
O130216	51	0	23	1	23	1
O130226	70	0	15	1	45	1
O130239	47	0	3	1	8	1
O130251	59	1	3	0	3	0
O130262	71	0	10	1	10	1
O130270	61	0	48	0	48	0
R10009	72	0	95	0	95	0
R10019	85	0	43	1	69	1
R10042	78	1	3	1	3	1
R10056	62	0	31	1	93	0
R10058	58	1	6	1	20	0
R10065	48	1	27	1	91	1
R10116	59	1	92	0	92	0
R10118	72	0	3	1	3	1
R10120	35	0	92	0	92	0
R10122	44	1	12	1	17	1

R10133	65	0	6	1	14	1
R10151	63	0	11	1	40	1
R10156	57	0	28	1	91	0
R10173	57	0	44	1	44	1
R10200	51	0	46	1	90	0
R10211	60	0	7	1	7	1
R10229	69	0	32	1	32	1
R10235	69	0	9	1	24	1
R10241	55	0	89	0	89	0
R10243	57	0	19	1	34	1
R10254	45	0	12	0	12	0
R10255	55	0	24	1	86	0
R10266	57	1	61	1	86	1
R10329	52	0	12	1	40	1
R10344	40	0	31	1	69	1
R10351	63	0	20	1	76	1
R10360	52	0	19	1	85	0

Table S2.

Sequences of siRNAs for knocking down the four candidate genes.

si-RNA	5'--3'
CXCL9-homo-119-sense	GGUUCUGAUUGGAGUGCAATT
CXCL9-homo-119-antisense	UUGCACUCCAUCAGAACCTT
CXCL9-homo-178-sense	GCACCAACCAAGGGACUAUTT
CXCL9-homo-178-antisense	AUAGUCCCUUGGUUGGUGCTT
GADD45G-homo-178-sense	GGAAAGCGCUGCAUGAGUUTT
GADD45G-homo-178-antisense	AACUCAUGCAGCGCUUUCCTT
GADD45G-homo-458-sense	CCUGCACUGCAUCCUCAUUTT
GADD45G-homo-458-antisense	AAUGAGGAUGCAGUGCAGGTT
RAB36-homo-674-sense	GCAUCGCAUCUGCCUACUATT
RAB36-homo-674-antisense	UAGUAGGCAGAUGCGAUGCTT
RAB36-homo-819-sense	GGGAACCAAGAAGGACCUUTT
RAB36-homo-819-antisense	AAGGUCCUUCUUGGUUCCCTT
TSPAN13-homo-285-sense	GCCCUC AACCUGCUUUACATT
TSPAN13-homo-285-antisense	UGUAAAGCAGGUUGAGGGCTT
TSPAN13-homo-406-sense	UCUUGUCCUGAUUGCUUUTT
TSPAN13-homo-406-antisense	AAAGCAAUCAGGAACAAGATT

Table S3.

Primers sequences of the four candidate genes.

Primer	5'--3'
--------	--------

h-ACTB-F	CTTCGCGGGCGACGAT
h-ACTB-R	CCACATAGGAATCCTTCTGACC
h-CXCL9-F	ATTGGTGCCAGTTAGCCTC
h-CXCL9-R	TTCTGGCCACAGACAACCTC
h-RAB36-F	CCCTCCCCACTCTACTTCCA
h-RAB36-R	CAAAGGTGTCAGGGAGGACC
h-TSPAN13-F	CTTGCGCTTGTGTTAGCCCTG
h-TSPAN13-R	TCGAGCACTTGCCGTATTGT
h-GADD45G-F	GCGTCTACGAGTCAGCCAAA
h-GADD45G-R	CAGAAAGCCTGGATCAGCGT
h-CD3D-F	ACTGGCTACCCTTCTCTCG
h-CD3D-R	CCGTTCCCTCTACCCATGTGA
h-CXCL13-F	GCTTGAGGTGTAGATGTGTCC
h-CXCL13-R	CCCACGGGGCAAGATTTGAA
h-IL2RG-F	TGCATTGGAAGCCGTGGTTAT
h-IL2RG-R	GTTCCCGTGGTATTCAGTAACAA

Table S4

Parameters of all candidate genes in TCGA cohort for model development.

Gene	Univariate Cox regression			Multivariate Cox regression		
	HR	95%CI	pvalue	HR	95%CI	pvalue
IL2RG	0.85	0.72-1.00	0.0483	0.92	0.68-1.24	0.5739
CXCL9	0.92	0.86-0.98	0.0158	0.90	0.8-1.020	0.0979
TSPAN13	0.86	0.75-0.98	0.0270	0.88	0.76-1.02	0.0789
CXCL13	0.85	0.75-0.96	0.0095	0.91	0.73-1.13	0.3994
GADD45G	0.63	0.42-0.95	0.0261	0.59	0.38-0.92	0.0194
RAB36	0.74	0.59-0.94	0.0121	0.69	0.54-0.87	0.0018
CD3D	0.86	0.74-0.99	0.0410	1.13	0.82-1.56	0.4667

Table S5

Performance of random combinations. The columns indicate the p values of survival difference in different cohorts between high-risk and low-risk groups.

Comb	TCGA	GSE3	E386	GSE6
		2062		3885
CXCL9_ATP8B4_PTGER2_CXCL13_GADD45G_CD27_CD3D_CD3G	0.0018 15847	0.039 361	0.73 3604	0.459 344
IL2RG_CXCL9_GADD45G_RAB36_CD3D_CD3G_CD2_CH_RNB4	0.0536 55672	0.126 398	0.16 472	0.985 126
SNRPD2_CXCL13_CD27_RAB36_CD2	0.0110 42899	0.073 971	0.22 1559	0.688 397
IL2RG_ATP8B4_SNRPD2_PTGER2_CD27	5.70E- 05	0.847 932	0.82 9429	0.491 833
PTGER2_CXCL13_CD3D_CD3G	0.0122 44843	0.337 321	0.98 0564	0.652 332

TAP1_IL2RG_CXCL9_TSPAN13_PTGER2_CXCL13_CD27_R AB36_CD3D_CD3G	0.0002 81024	0.001 631	0.44 888	0.078 809
TAP1_IL2RG_CXCL9_PTGER2_CXCL13_GADD45G_CD27_ RAB36_CD3D_CD3G_CD2	0.9702 06385	0.021 99	0.72 2992	0.058 771
CXCL9_ATP8B4_SNRPD2_PTGER2_CXCL13_CD3G_CHRN B4	0.0002 14409	0.006 604	0.35 7087	0.569 179
TAP1_IL2RG_CXCL9_ATP8B4_TSPAN13_PTGER2_CXCL13 _GADD45G_RAB36_CD3D_CD2_CHRNB4	0.0878 6164	0.418 77	0.06 4096	0.985 43
IL2RG_ATP8B4_SNRPD2_GADD45G_RAB36_CD3D	0.4607 09137	0.233 461	0.14 9516	0.591 845
TAP1_TSPAN13_SNRPD2_CXCL13_RAB36_CD3G	0.0511 82043	0.727 058	0.92 5654	0.902 871
TAP1_CXCL9_ATP8B4_TSPAN13_SNRPD2_CXCL13_GAD D45G_RAB36_CD3D_CD2_CHRNB4	0.0267 64187	0.018 391	0.04 7065	0.891 654
CXCL9_TSPAN13_SNRPD2_PTGER2_CXCL13_GADD45G_ RAB36_CD3D	0.6690 40713	0.442 035	0.19 7439	0.491 21
TSPAN13_SNRPD2_PTGER2_CXCL13_RAB36_CD3D_CHR NB4	2.55E- 06	0.787 865	0.56 8522	0.376 309
TAP1_IL2RG_CXCL9_TSPAN13_PTGER2_RAB36_CD3D_C HRNB4	0.5131 84891	0.007 857	0.85 0545	0.734 478
CXCL9_SNRPD2_PTGER2_GADD45G_CD3G	0.3319 11228	0.222 887	0.56 5115	0.979 004
TAP1_IL2RG_SNRPD2_GADD45G_RAB36_CD3D_CHRNB 4	0.4584 20592	0.177 141	0.84 8955	0.430 924
IL2RG_CXCL9_TSPAN13_SNRPD2_PTGER2_RAB36_CD3G	0.1455 06156	0.000 54	0.78 6384	0.656 154
TAP1_TSPAN13_SNRPD2_PTGER2_CXCL13_GADD45G_R AB36_CD3G_CD2_CHRNB4	0.0012 39393	0.504 535	0.19 6734	0.002 998
TAP1_SNRPD2_PTGER2_CXCL13_GADD45G_RAB36_CD3 G_CD2	0.0668 88072	0.961 36	0.96 8069	0.006 51
ATP8B4_CXCL13_CD27_CD3D	0.7758 89405	0.580 146	0.77 1888	0.056 312
IL2RG_ATP8B4_TSPAN13_SNRPD2_PTGER2_CXCL13_RA B36	0.3757 65906	0.043 59	0.10 2571	0.284 205
IL2RG_ATP8B4_SNRPD2_GADD45G_CD3D_CD3G_CD2	0.6265 84447	0.002 163	0.62 8105	0.261 03
TAP1_IL2RG_ATP8B4_TSPAN13_SNRPD2_CXCL13_RAB3 6_CD3G_CD2	0.1418 23664	0.352 529	0.48 6984	0.574 398
TAP1_IL2RG_CXCL9_ATP8B4_SNRPD2_PTGER2_CXCL13 _CD27_RAB36_CD2_CHRNB4	0.8556 46891	0.269 802	0.88 9671	0.828 775
TSPAN13_SNRPD2_CXCL13_CD27_CD3D_CHRNB4	0.0032 0928	0.342 089	0.09 9702	0.626 284
TAP1_IL2RG_ATP8B4_SNRPD2_CXCL13_CD27_CD2	0.4248 10019	0.255 137	0.05 9802	0.621 579

TAP1_ATP8B4_GADD45G_CD27_CD3D_CD3G_CD2_CHRNB4	0.2168 79369	0.626 202	0.73 3716	0.736 969
IL2RG_CXCL9_ATP8B4_SNRPD2_CXCL13_RAB36_CD2	0.5736 04834	0.054 57	0.28 9545	0.145 439
IL2RG_ATP8B4_CXCL13_RAB36_CD3G_CHRNB4	0.0024 09444	0.028 785	0.42 561	0.620 461
TAP1_IL2RG_CXCL9_SNRPD2_GADD45G_CD2	0.3070 33851	0.942 502	0.07 0618	0.066 318
ATP8B4_TSPAN13_PTGER2_CD3G_CD2	0.1823 79391	0.104 438	0.26 234	0.410 365
CXCL9_TSPAN13_SNRPD2_PTGER2_GADD45G_RAB36_CD3G	0.0442 89088	0.991 176	0.38 0958	0.925 879
TAP1_IL2RG_CXCL9_ATP8B4_TSPAN13_SNRPD2_CXCL13_GADD45G_CD27_RAB36_CD3G	0.1381 60689	0.010 944	0.81 7031	0.606 351
TAP1_IL2RG_CXCL9_SNRPD2_CXCL13_GADD45G_CD27_CD3D_CD3G_CD2_CHRNB4	0.0012 68475	0.000 867	0.14 9237	0.271 041
TAP1_CXCL9_CXCL13_GADD45G_RAB36_CD3D_CD2_CHRNB4	0.1166 09911	0.010 741	0.37 8704	0.872 665
TAP1_IL2RG_CXCL9_ATP8B4_TSPAN13_GADD45G_CD3G_CD2	0.8701 30138	0.033 778	0.92 3379	0.847 21
IL2RG_CXCL9_TSPAN13_SNRPD2_CXCL13_CD27_CD3D_CD3G	0.5465 78523	0.581 155	0.59 2325	0.196 034
TAP1_CXCL9_SNRPD2_PTGER2_CXCL13_RAB36_CHRNB4	0.8880 42756	0.027 21	0.65 402	0.946 39
IL2RG_CXCL9_ATP8B4_TSPAN13_SNRPD2_PTGER2_GADD45G_RAB36_CD2_CHRNB4	0.9424 793	0.366 419	0.72 4651	0.882 863
ATP8B4_TSPAN13_SNRPD2_GADD45G_CD27_CD3D_CHRNB4	0.0035 56178	0.406 277	0.63 6924	0.693 791
TAP1_CXCL13_GADD45G_CHRNB4	0.6677 09139	0.126 584	0.46 7732	0.290 831
IL2RG_CXCL9_SNRPD2_CXCL13_GADD45G_CD27_CD2_CHRNB4	0.0487 83077	0.153 505	0.55 726	0.238 608
CXCL9_ATP8B4_TSPAN13_PTGER2_GADD45G_RAB36_CD3G	0.0444 99124	0.925 426	0.26 3862	0.337 985
TAP1_IL2RG_ATP8B4_SNRPD2_CXCL13_CD3D_CHRNB4	0.0031 05763	0.215 628	0.07 4586	0.744 194
ATP8B4_TSPAN13_GADD45G_RAB36_CD3D_CD3G	0.4317 59786	0.005 955	0.99 5846	0.383 457
ATP8B4_TSPAN13_CXCL13_CD27_RAB36_CD3D_CD2_CHRNB4	6.63E-05	0.847 441	0.47 9533	0.929 706
TAP1_CXCL9_ATP8B4_PTGER2_CXCL13_GADD45G_CD3G_CD2	0.6598 78479	0.446 049	0.45 9969	0.126 666
TAP1_IL2RG_TSPAN13_CXCL13_GADD45G_CD27	0.0011 0941	0.121 628	0.40 3221	0.708 024

CXCL9_ATP8B4_TSPAN13_PTGER2_CXCL13_CD3D_CD3G	4.65E-05	0.606054	0.394584	0.569027
TAP1_IL2RG_CXCL9_ATP8B4_TSPAN13_PTGER2_CD27_CD3D_CD3G_CD2_CHRNB4	0.056353848	0.439394	0.021466	0.96715
IL2RG_CXCL9_CD27_RAB36_CD3G_CD2_CHRNB4	0.023803668	0.028372	0.075097	0.065394
PTGER2_GADD45G_RAB36_CD2_CHRNB4	9.21E-06	0.063598	0.707027	0.689274
TAP1_IL2RG_CXCL9_ATP8B4_SNRPD2_CD27_CD3D_CHRNB4	0.434815138	0.249488	0.196611	0.652851
TAP1_CXCL9_ATP8B4_TSPAN13_PTGER2_GADD45G_CD3D_CD3G_CHRNB4	0.000258673	0.608303	0.313354	0.351419
CXCL9_ATP8B4_TSPAN13_SNRPD2_CD27_CD3D_CD3G_CHRNB4	0.000730681	0.02187	0.354687	0.988527
TAP1_IL2RG_CXCL9_ATP8B4_TSPAN13_SNRPD2_GADD45G_CD27_CD3G_CD2	0.165884373	0.619498	0.173597	0.81069
TAP1_TSPAN13_SNRPD2_PTGER2_CXCL13_CD27_RAB36_CHRNB4	0.238348556	0.628484	0.696675	0.35878
TAP1_IL2RG_ATP8B4_TSPAN13_PTGER2_CXCL13_CD27_RAB36_CD3D_CD3G_CD2	0.000132965	0.691216	0.242467	0.204788
ATP8B4_TSPAN13_PTGER2_CD27_CHRNB4	2.21E-06	0.013691	0.965359	0.852049
CXCL9_ATP8B4_TSPAN13_CXCL13_CD27_RAB36_CD3D_CD2	6.52E-06	0.433985	0.06035	0.971706
ATP8B4_CXCL13_GADD45G_CD27_CD3D_CD2_CHRNB4	0.251677586	0.437889	0.744125	0.849164
IL2RG_CXCL9_GADD45G_CD27_CD3D_CD3G_CD2_CHRNB4	0.718810445	0.059464	0.99586	0.412193
IL2RG_CXCL9_ATP8B4_PTGER2_CD27_CD3D_CD3G	0.054226945	0.308928	0.448098	0.824986
TAP1_IL2RG_TSPAN13_PTGER2_GADD45G_CD3G_CHRNB4	0.024946308	0.403276	0.606683	0.488677
TAP1_IL2RG_ATP8B4_TSPAN13_SNRPD2_PTGER2_CXCL13_RAB36_CD3D	0.588233337	0.051234	0.366196	0.255172
CD27_RAB36_CD3D_CD2_CHRNB4	0.261632453	0.014283	0.18675	0.917406
TAP1_CXCL9_TSPAN13_SNRPD2_RAB36_CD3D_CHRNB4	0.000802913	0.214335	0.702124	0.512417
TAP1_IL2RG_CXCL9_PTGER2_CXCL13_GADD45G_CD3D_CD2_CHRNB4	0.040044852	0.420366	0.084874	0.964546
CXCL9_ATP8B4_PTGER2_CXCL13_GADD45G_CD27_CD3D_CD3G_CHRNB4	0.365867977	0.958921	0.279867	0.24558
IL2RG_ATP8B4_SNRPD2_PTGER2_CD27_CHRNB4	0.720886108	0.769344	0.251671	0.567895

TAP1_IL2RG_TSPAN13_SNRPD2_RAB36_CD3G	0.1981 49884	0.115 935	0.13 5282	0.781 572
PTGER2_CXCL13	0.0771 25351	0.560 364	0.50 6914	0.961 686
IL2RG_CXCL9_PTGER2_CXCL13_GADD45G_RAB36_CD3D	0.4065 14287	0.033 171	0.43 3687	0.942 791
IL2RG_TSPAN13_GADD45G_CD27_CD3D_CD3G_CD2_CHRNB4	0.8135 55441	0.421 91	0.23 6344	0.863 875
CXCL9_ATP8B4_TSPAN13_SNRPD2_PTGER2_CXCL13_GADD45G_RAB36_CD3D_CHRN4	0.0182 89314	0.197 887	0.86 1555	0.865 723
TAP1_IL2RG_CXCL9_ATP8B4_CD3D_CD3G	0.5088 55366	0.031 643	0.42 8253	0.813 365
CXCL9_ATP8B4_TSPAN13_CXCL13_RAB36_CD2_CHRN4	0.4749 7322	0.697 933	0.96 6568	0.793 927
TAP1_IL2RG_TSPAN13_SNRPD2_GADD45G_RAB36_CHRN4	0.0021 7256	0.001 796	0.89 9039	0.653 39
IL2RG_ATP8B4_TSPAN13_SNRPD2_PTGER2_GADD45G_CD27_CD3D_CD2	0.9140 12037	0.547 339	0.01 3498	0.212 159
TAP1_IL2RG_PTGER2_CD27_RAB36_CD2_CHRN4	0.1916 76947	0.196 211	0.96 5276	0.500 728
CXCL9_SNRPD2_CXCL13_CD27_CD3D	0.8530 58184	0.753 214	0.46 8262	0.003 002
TAP1_CXCL9_TSPAN13_PTGER2_GADD45G_CHRN4	0.4118 25755	0.000 36	0.86 0094	0.947 312
TAP1_IL2RG_CXCL9_TSPAN13_SNRPD2_PTGER2_CD27_CD3G_CD2_CHRN4	0.0142 26167	0.092 461	0.60 4574	0.349 263
ATP8B4_TSPAN13_SNRPD2_PTGER2_CD3G_CD2_CHRN4	0.4155 79908	0.001 272	0.78 4367	0.141 772
TAP1_IL2RG_CXCL9_ATP8B4_SNRPD2_PTGER2_CXCL13_CD27_CD3D_CD3G_CD2_CHRN4	0.1065 73042	0.297 324	0.50 6364	0.715 616
CXCL9_ATP8B4_SNRPD2_PTGER2_GADD45G_CD3G	0.3959 07189	0.662 9	0.26 5739	0.736 812
TAP1_CXCL9_GADD45G_CD27_RAB36_CD3G_CHRN4	0.0079 86383	0.003 548	0.44 2236	0.753 206
TAP1_IL2RG_TSPAN13_SNRPD2_CXCL13_RAB36_CD3D_CHRN4	0.3666 99062	0.055 747	0.84 7798	0.590 654
TSPAN13_SNRPD2_CXCL13_CD3D	0.2188 5159	0.101 225	0.73 5919	0.304 457
IL2RG_ATP8B4_SNRPD2_CD27_CD3D_CD3G_CD2	0.1385 44055	0.015 566	0.29 9996	0.882 392
IL2RG_GADD45G_CD27_RAB36_CD2	0.0077 49231	0.001 839	0.03 4847	0.222 187
ATP8B4_GADD45G_RAB36_CD3G	0.6989 53682	0.011 72	0.89 5507	0.566 046

IL2RG_CXCL9_ATP8B4_TSPAN13_SNRPD2_PTGER2_RAB36_CD2_CHRNB4	0.0045 8129	0.004 226	0.41 6862	0.543 155
IL2RG_CXCL9_TSPAN13_CXCL13_GADD45G_CD27_RAB36	0.0008 00153	0.065 735	0.23 6083	0.290 816
TAP1_CXCL13_GADD45G_CD27_CD3G_CD2_CHRNB4	0.7895 05614	0.103 571	0.38 5548	0.333 367
TAP1_IL2RG_CXCL9_TSPAN13_SNRPD2_GADD45G_CD27_RAB36_CD3D_CD2	0.2097 78392	0.073 403	0.55 223	0.419 222
ATP8B4_PTGER2_CXCL13	0.1158 84966	0.377 438	0.00 8964	0.102 419
TAP1_IL2RG_ATP8B4_TSPAN13_SNRPD2_PTGER2_CXCL13_CD27_CD3G	0.6157 23956	0.037 914	0.19 0459	0.174 998
TAP1_CXCL9_SNRPD2_RAB36_CD3D	0.0003 37231	0.001 603	0.97 369	0.855 583
TAP1_IL2RG_CXCL9_ATP8B4_GADD45G_CHRNB4	0.3928 48462	0.142 074	0.67 1772	0.681 704
TAP1_IL2RG_ATP8B4_TSPAN13_SNRPD2_PTGER2_CXCL13_GADD45G_CD27_CHRNB4	0.9980 16948	0.808 913	0.46 1262	0.452 563
CXCL9_TSPAN13_GADD45G_CD27_RAB36_CD2	7.92E- 05	0.058 262	0.46 1709	0.949 494
TAP1_IL2RG_ATP8B4_SNRPD2_PTGER2_CXCL13_GADD45G_RAB36_CD3D	0.6325 57337	0.766 152	0.37 3627	0.562 835
TAP1_ATP8B4_TSPAN13_CXCL13_GADD45G_CD27_RAB36_CD3G	0.1159 11208	0.118 325	0.47 7296	0.430 369
IL2RG_ATP8B4_TSPAN13_SNRPD2_PTGER2_CXCL13_CHRNB4	0.0045 56516	0.035 494	0.74 7823	0.856 708
TAP1_CXCL9_ATP8B4_SNRPD2_PTGER2_CXCL13_GADD45G_CD27_RAB36_CD3D	0.0510 31208	0.940 554	0.17 8011	0.988 848
IL2RG_TSPAN13_CD27_RAB36_CD3D_CD2	0.1332 8996	0.110 19	0.68 4639	0.668 144
IL2RG_CXCL9_ATP8B4_TSPAN13_GADD45G_RAB36_CD3D_CD2	0.0531 51848	0.641 425	0.05 5255	0.352 292
TAP1_CXCL9_ATP8B4_TSPAN13_CXCL13_CD3D_CD2	0.3413 82543	0.967 145	0.26 1225	0.946 339
IL2RG_CXCL9_SNRPD2_PTGER2_CXCL13_GADD45G_RAB36_CD3D_CD3G_CD2	0.1099 26047	0.000 361	0.87 1037	0.820 635
IL2RG_CXCL9_TSPAN13_PTGER2_CXCL13_CD27_RAB36_CD2_CHRNB4	0.0485 92498	0.794 413	0.37 5793	0.296 696
IL2RG_CXCL9_ATP8B4_PTGER2_CXCL13_GADD45G_RAB36_CD3D_CHRNB4	0.0009 5713	0.274 172	0.58 7264	0.531 945
TAP1_IL2RG_CXCL9_PTGER2_CD3D_CD3G_CD2_CHRNB4	0.5390 71508	0.600 759	0.71 2299	0.380 244
TAP1_IL2RG_ATP8B4_TSPAN13_CXCL13_GADD45G_CD27_RAB36_CD3D_CD3G_CD2	2.82E- 06	0.259 151	0.16 1048	0.560 338

IL2RG_CXCL9_ATP8B4_TSPAN13_SNRPD2_GADD45G_CD2_CHRNB4	2.34E-05	0.264817	0.228367	0.674765
TAP1_IL2RG_ATP8B4_SNRPD2_PTGER2_CXCL13_GADD45G_CD27_RAB36_CD3D_CD3G	0.690766005	0.11074	0.932574	0.468291
IL2RG_CXCL9_ATP8B4_TSPAN13_SNRPD2_PTGER2_CXCL13_GADD45G_CD27	0.910763202	0.002335	0.250654	0.136954
TAP1_IL2RG_CXCL9_ATP8B4_CXCL13_GADD45G_CD3G_CD2_CHRNB4	0.973391415	0.525054	0.409749	0.123658
ATP8B4_TSPAN13_CXCL13_GADD45G_RAB36_CD3D_CHRNB4	2.84E-06	0.007972	0.127803	0.31367
TAP1_IL2RG_ATP8B4_TSPAN13_PTGER2_CXCL13_GADD45G_CD3G_CD2	0.359129924	0.624299	0.100224	0.78933
TAP1_IL2RG_TSPAN13_CD27_RAB36_CD2_CHRNB4	0.02482762	0.788592	0.846178	0.525069
ATP8B4_TSPAN13_CXCL13_RAB36_CD3G_CD2_CHRNB4	0.000251958	0.101226	0.571915	0.708437
IL2RG_TSPAN13_PTGER2_CXCL13_RAB36_CHRNB4	0.996156299	0.93852	0.964712	0.889706
CXCL9_ATP8B4_TSPAN13_SNRPD2_PTGER2_CD27_RAB36_CD3D_CD3G_CD2	0.036185046	0.673338	0.69164	0.556179
TAP1_IL2RG_CXCL9_ATP8B4_SNRPD2_RAB36_CD3D_CD2_CHRNB4	0.314580743	0.932503	0.197475	0.850348
IL2RG_TSPAN13_SNRPD2_PTGER2_CXCL13_GADD45G_CD3G	0.040197298	0.320151	0.79399	0.194951
TAP1_CXCL9_ATP8B4_CXCL13_GADD45G_RAB36_CD3D_CD2	0.552275407	0.105388	0.641094	0.572088
CXCL9_ATP8B4_TSPAN13_RAB36_CD3G_CD2_CHRNB4	0.240983242	0.927896	0.935502	0.65439
CXCL9_TSPAN13_SNRPD2_CXCL13_GADD45G_CD27_RAB36_CD3D	0.000227745	0.121991	0.442756	0.242471
TSPAN13_PTGER2_CXCL13_RAB36_CHRNB4	0.070779906	0.003836	0.795803	0.452471
IL2RG_CXCL9_TSPAN13_CXCL13_GADD45G_CD27_CD3D_CD2_CHRNB4	0.387287462	0.001652	0.603892	0.362288
TAP1_IL2RG_CXCL9_SNRPD2_CXCL13_GADD45G_CD3G_CD2	0.430109151	0.032609	0.653582	0.984949
SNRPD2_GADD45G_CD27_CD3D_CD2_CHRNB4	0.004070916	0.030442	0.370546	0.764252
IL2RG_ATP8B4_SNRPD2_PTGER2_GADD45G_CD27_CD3G_CD2_CHRNB4	0.082336732	0.500487	0.353457	0.599384
TAP1_CXCL9_SNRPD2_GADD45G_CD27_CD3G_CHRNB4	0.020696714	0.005105	0.076617	0.087682
TAP1_IL2RG_CXCL9_PTGER2_RAB36_CD3G_CD2_CHRNB4	0.312915964	0.153767	0.120192	0.88494

IL2RG_CXCL9_TSPAN13_CXCL13_CD27_CD3D_CD2	0.0305 99137	0.009 792	0.78 9336	0.641 962
SNRPD2_CD27_RAB36_CD3D_CD2	0.6923 24532	0.697 151	0.90 2657	0.593 051
TAP1_IL2RG_CXCL9_CD27_RAB36_CD2	0.0347 9632	0.116 998	0.30 924	0.859 188
CXCL9_GADD45G_CD3G_CD2_CHRNB4	0.5635 39636	0.254 156	0.58 3467	0.685 186
TAP1_CXCL9_ATP8B4_PTGER2_GADD45G_RAB36_CD2_CHRNB4	0.1567 10054	0.461 079	0.76 052	0.907 048
TAP1_IL2RG_CXCL9_ATP8B4_SNRPD2_CD27_CD3D_CD2	5.55E- 05	0.017 978	0.89 0927	0.629 046
IL2RG_ATP8B4_CD27_RAB36_CD3G_CD2	0.5014 68841	0.231 021	0.33 5154	0.128 333
TAP1_ATP8B4_CXCL13_CD27_CD3G_CHRNB4	9.44E- 05	0.917 565	0.75 8174	0.980 095
RAB36_CD3D_CD3G_CHRNB4	0.7108 36456	0.055 795	0.53 7294	0.663 714
ATP8B4_SNRPD2_CD27_RAB36_CD3D	5.24E- 06	0.038 752	0.83 8758	0.981 706
TAP1_IL2RG_CXCL9_SNRPD2_PTGER2_GADD45G_CD27_CHRNB4	0.0007 95146	0.080 979	0.34 8844	0.143 063
TAP1_ATP8B4_SNRPD2_CXCL13_RAB36_CHRNB4	0.0008 88302	0.055 838	0.41 6777	0.539 176
CXCL9_TSPAN13_SNRPD2_CD27_RAB36_CD3G	3.54E- 07	0.349 219	0.09 6733	0.347 779
TAP1_ATP8B4_TSPAN13_SNRPD2_CXCL13_GADD45G_CD27_CD3D_CD3G	0.0704 54949	0.445 918	0.57 1908	0.922 806
TAP1_IL2RG_ATP8B4_TSPAN13_SNRPD2_CD3G	0.0283 30868	0.019 521	0.28 5251	0.477 144
TAP1_IL2RG_CXCL9_SNRPD2_PTGER2_CXCL13_CD27_CD3G	0.0004 75505	0.061 108	0.30 8805	0.421 929
TAP1_IL2RG_CXCL9_ATP8B4_TSPAN13_SNRPD2_CD3G_CD2_CHRNB4	0.0847 29835	0.332 726	0.46 7414	0.762 113
TAP1_CXCL9_TSPAN13_PTGER2_CXCL13_RAB36_CD3G	0.0012 80531	0.011 139	0.51 4998	0.590 286
TAP1_ATP8B4_TSPAN13_PTGER2_CXCL13_GADD45G_CD3D_CD2	0.0211 21419	0.984 249	0.93 6811	0.501 58
TAP1_IL2RG_CXCL9_ATP8B4_TSPAN13_PTGER2_CXCL13_GADD45G_CD27_CD3G_CHRNB4	0.7458 6395	0.571 374	0.56 1325	0.723 148
TSPAN13_SNRPD2_PTGER2_RAB36_CD3D	0.2810 44412	0.007 577	0.28 9233	0.149 268
IL2RG_CXCL9_ATP8B4_TSPAN13_SNRPD2_CXCL13_CD27_CD2	7.53E- 06	0.640 559	0.94 7048	0.141 503

TAP1_TSPAN13_CD3D_CD3G_CD2_CHRNB4	0.9834 86931	0.777 527	0.06 3887	0.624 512
TAP1_CXCL9_TSPAN13_SNRPD2_PTGER2_CXCL13_CD2 7_RAB36_CD2_CHRNB4	0.4884 81742	0.362 78	0.53 6916	0.425 574
TSPAN13_PTGER2_CXCL13_GADD45G_CD27_CD3D_CD 3G_CD2	0.8805 76441	0.816 529	0.92 5747	0.527 779
IL2RG_ATP8B4_TSPAN13_PTGER2_CD27_RAB36_CD3G	0.3368 79401	0.482 999	0.93 7003	0.556 21
TAP1_SNRPD2_PTGER2_CXCL13_GADD45G_CD27_RAB3 6_CD2_CHRNB4	0.0250 12712	0.572 982	0.60 7113	0.576 048
CXCL9_ATP8B4_TSPAN13_SNRPD2_GADD45G_CD27_C D3D_CD3G_CD2	0.9468 43463	0.010 161	0.89 1633	0.783 318
TSPAN13_SNRPD2_GADD45G_RAB36_CD3G_CHRNB4	0.2957 6259	0.743 472	0.36 8597	0.461 712
CXCL9_ATP8B4_CXCL13_CHRNB4	1.53E- 05	0.161 773	0.17 8242	0.605 476
TAP1_IL2RG_CXCL9_TSPAN13_CXCL13_GADD45G_CD2_ CHRNB4	0.0174 72916	0.254 129	0.91 7878	0.104 193
IL2RG_ATP8B4_TSPAN13_PTGER2_CD27_CD3G_CHRNB 4	3.86E- 05	0.324 65	0.90 9304	0.353 819
TAP1_IL2RG_PTGER2_CXCL13_CD27_CD3G_CD2	0.0852 20933	0.211 606	0.78 718	0.078 383
TAP1_CXCL9_SNRPD2_PTGER2_CXCL13_CD27_RAB36_C D3G_CD2_CHRNB4	8.31E- 05	0.139 755	0.36 6878	0.963 71
TAP1_IL2RG_CXCL9_ATP8B4_GADD45G_RAB36_CD3D_ CD2	0.3657 12011	0.040 874	0.77 4978	0.669 294
TAP1_TSPAN13_CD3D_CD3G	0.0792 40552	0.014 334	0.76 8513	0.805 751
IL2RG_TSPAN13_CD2_CHRNB4	0.3696 8135	0.800 036	0.75 057	0.786 992
TAP1_IL2RG_PTGER2_CXCL13_GADD45G_CD27_RAB36_ CD2_CHRNB4	0.2644 31994	0.039 123	0.70 0989	0.990 152
TAP1_IL2RG_CXCL9_SNRPD2_PTGER2_CXCL13_CD27_C D3D_CD3G_CHRNB4	0.0106 59274	0.156 195	0.89 2508	0.827 935
IL2RG_CXCL9_TSPAN13_CXCL13_GADD45G_RAB36_CD 3D_CHRNB4	0.0071 98056	0.540 577	0.67 2476	0.859 5
CXCL9_ATP8B4_SNRPD2_PTGER2_GADD45G_CD3D	0.2182 71549	0.552 95	0.06 9071	0.824 123
CXCL9_TSPAN13_CXCL13_CD27_RAB36_CD3D_CD3G_C D2	0.0001 52199	0.160 521	0.58 8408	0.057 57
CXCL9_ATP8B4_TSPAN13_PTGER2_CD27_RAB36_CD2_C HRNB4	0.2154 90809	0.441 707	0.40 0485	0.993 071
ATP8B4_TSPAN13_GADD45G_CD27_RAB36_CD2	0.4443 23227	0.344 712	0.32 9802	0.530 916

TAP1_IL2RG_CXCL9_TSPAN13_SNRPD2_PTGER2_RAB36_CD3D_CD3G_CD2_CHRNB4	0.4439 07421	0.904 465	0.41 9859	0.969 168
TAP1_CD27_RAB36_CD3D_CD3G	0.1546 32231	0.012 591	0.61 99	0.351 361
TAP1_IL2RG_SNRPD2_PTGER2_GADD45G_CD27_CD3G_CD2	0.8785 27214	0.213 049	0.07 3692	0.702 94
ATP8B4_GADD45G_CD2_CHRNB4	0.0014 05339	0.180 706	0.65 4055	0.619 471
IL2RG_CXCL9_ATP8B4_TSPAN13_SNRPD2_PTGER2_RAB36	0.0257 87228	0.270 617	0.52 7319	0.772 863
IL2RG_CXCL9_ATP8B4_SNRPD2_PTGER2_CXCL13_CD27_RAB36_CD3D_CD3G	0.6599 66932	0.594 094	0.07 37	0.527 504
TAP1_IL2RG_ATP8B4_SNRPD2_RAB36_CD3D_CD3G_CD2	0.4145 83359	0.900 658	0.24 53	0.139 185
IL2RG_TSPAN13_SNRPD2_PTGER2_CD27_CD3D_CD3G	0.0698 58809	0.242 471	0.67 4615	0.379 404
TAP1_CXCL13_CD27_CD2_CHRNB4	0.8223 2638	0.553 967	0.61 4876	0.234 202
TAP1_IL2RG_ATP8B4_TSPAN13_CXCL13_GADD45G_CD27_CD3D_CHRNB4	0.9527 90149	0.652 737	0.20 2133	0.319 009
TAP1_ATP8B4_CXCL13_GADD45G_CD27_CD3D_CD2_CHRNB4	0.0055 05526	0.214 169	0.20 4871	0.213 39
IL2RG_CXCL9_ATP8B4_TSPAN13_SNRPD2_PTGER2_CXCL13_GADD45G_CD3D	0.3933 04213	0.008 193	0.09 4763	0.563 762
SNRPD2_GADD45G_CD27_RAB36_CHRNB4	0.0044 83212	0.021 419	0.73 4366	0.346 372
CXCL9_ATP8B4_SNRPD2_CXCL13_RAB36_CD3G	0.9102 10845	0.546 785	0.12 1823	0.103 892
TAP1_ATP8B4_TSPAN13_PTGER2_GADD45G_RAB36_CD3G_CD2_CHRNB4	0.3409 1519	0.619 759	0.75 1719	0.549 183
CXCL9_ATP8B4_GADD45G_RAB36_CD2_CHRNB4	0.9097 74746	0.021 359	0.56 5973	0.572 021
IL2RG_SNRPD2_PTGER2_GADD45G_CD27_RAB36_CHRNB4	0.0761 4402	0.241 237	0.22 864	0.362 011
ATP8B4_PTGER2_CXCL13_GADD45G_RAB36_CD3D_CD2	0.1420 6771	0.013 407	0.60 3233	0.578 131
ATP8B4_TSPAN13_CD27_RAB36_CD3D_CHRNB4	3.22E-06	0.242 487	0.46 208	0.596 769
TAP1_IL2RG_TSPAN13_GADD45G_CD27_RAB36_CD3D_CHRNB4	0.0133 30164	0.429 398	0.56 6905	0.194 333
TAP1_TSPAN13_CXCL13_CD27_RAB36_CD3G_CD2	1.87E-06	0.127 335	0.91 2262	0.829 362
TAP1_IL2RG_TSPAN13_CXCL13_GADD45G_CD3G_CD2	0.0016 76586	0.069 292	0.19 3585	0.464 571

TAP1_IL2RG_PTGER2_GADD45G_RAB36_CD3D_CD2	0.6349 21408	0.038 914	0.32 667	0.086 928
TAP1_PTGER2_CXCL13_GADD45G_RAB36_CD2_CHRNB4	0.0996 30122	0.113 498	0.26 4275	0.210 045
TAP1_ATP8B4_TSPAN13_SNRPD2_CXCL13_GADD45G_RAB36_CD3D_CD3G_CD2	0.8614 81147	0.004 361	0.79 3018	0.266 83
CXCL9_ATP8B4_TSPAN13_SNRPD2_RAB36_CD3D_CD3G_CHRNB4	5.27E- 06	0.831 8	0.14 5906	0.874 064
TAP1_TSPAN13_SNRPD2_CD27_RAB36_CD3D_CD2_CHRNB4	0.0608 81996	0.672 693	0.64 8234	0.025 768
TAP1_CXCL9_ATP8B4_SNRPD2_CXCL13_GADD45G_CD27	0.5580 61764	0.007 437	0.24 0994	0.231 31
TAP1_TSPAN13_SNRPD2_CXCL13_GADD45G_CD3D_CD2_CHRNB4	0.0052 06451	0.161 582	0.61 5543	0.276 346
CXCL9_ATP8B4_SNRPD2_GADD45G_CHRNB4	0.0701 52917	0.278 424	0.25 3215	0.333 866
TSPAN13_SNRPD2_PTGER2_CXCL13_CD27_CD3D_CD2_CHRNB4	0.0016 8012	0.381 649	0.36 9459	0.297 639
CXCL9_ATP8B4_PTGER2_CXCL13_RAB36_CD3G_CD2_CHRNB4	0.0120 54095	0.209 759	0.16 3617	0.100 369
TAP1_IL2RG_TSPAN13_SNRPD2_CXCL13_CD27_RAB36_CD2	0.1076 40611	0.511 945	0.31 5356	0.695 351
CXCL9_ATP8B4_TSPAN13_CXCL13_GADD45G_CD27_CD3D	0.0117 55696	0.867 34	0.62 0513	0.217 641
TAP1_IL2RG_PTGER2_CXCL13_GADD45G_CD3G_CHRNB4	0.7491 63359	0.244 332	0.03 9647	0.572 027
TAP1_IL2RG_CXCL9_TSPAN13_SNRPD2_CXCL13_CD3D_CD3G_CD2	0.0199 85388	0.024 411	0.82 9562	0.546 893
ATP8B4_TSPAN13_SNRPD2_PTGER2_CXCL13_GADD45G_CD27_RAB36_CD2	0.4164 43139	0.111 772	0.58 575	0.606 075
TAP1_IL2RG_TSPAN13_CXCL13_RAB36	0.0004 58261	0.209 222	0.83 3347	0.524 192
TAP1_GADD45G_RAB36_CD3G_CD2_CHRNB4	0.0162 9441	0.014 629	0.38 6503	0.292 423
CXCL9_ATP8B4_TSPAN13_PTGER2_CXCL13_CD27_RAB36	0.0002 05755	0.175 505	0.49 4325	0.433 454
CXCL9_ATP8B4_SNRPD2_PTGER2_CD27_RAB36_CD3D_CD2	0.0187 35097	0.061 713	0.16 1107	0.066 699
PTGER2_GADD45G_CD27_CD3D_CD2_CHRNB4	7.34E- 05	0.480 726	0.04 591	0.723 794
TAP1_ATP8B4_SNRPD2_PTGER2_CXCL13_GADD45G_RAB36_CD3D_CD3G_CD2	0.6727 4227	0.000 745	0.88 6082	0.963 528
TAP1_ATP8B4_CXCL13_GADD45G_CD2	0.8850 04721	0.359 122	0.39 9017	0.395 214

TAP1_IL2RG_CXCL9_PTGER2_GADD45G_CD27_RAB36_CD3D_CD2	0.0001 06508	0.075 028	0.39 1139	0.836 234
TAP1_CXCL9_TSPAN13_SNRPD2_PTGER2_GADD45G_RAB36_CD3D	1.91E- 06	0.021 606	0.86 119	0.586 184
IL2RG_CXCL9_ATP8B4_TSPAN13_SNRPD2_PTGER2_RAB36_CD3D_CD3G	0.5478 74002	0.197 532	0.36 5778	0.940 723
TAP1_CXCL9_TSPAN13_SNRPD2_CD27_RAB36_CD3D_CD2	0.0621 00744	0.674 558	0.08 4064	0.995 69
CXCL9_ATP8B4_TSPAN13_SNRPD2_PTGER2_CXCL13_GADD45G_RAB36_CD3G_CHRNB4	0.0411 44132	0.092 335	0.93 2551	0.777 33
TAP1_IL2RG_CXCL9_SNRPD2_PTGER2_CXCL13_CD27_RAB36_CD3G_CD2	0.7760 9094	0.185 961	0.55 5291	0.952 441
SNRPD2_PTGER2_CD27_RAB36_CD3G_CD2_CHRNB4	0.0331 05324	0.001 051	0.91 4258	0.013 131
TAP1_IL2RG_ATP8B4_SNRPD2_CD27	0.7378 35591	0.089 271	0.63 5631	0.073 545
TAP1_SNRPD2_PTGER2_CXCL13_RAB36_CD3D_CD2	0.7283 55498	0.947 578	0.98 0383	0.059 637
TAP1_TSPAN13_SNRPD2_PTGER2_GADD45G_CD2_CHRNB4	0.6285 94811	0.000 11	0.62 7792	0.728 991
IL2RG_CXCL9_ATP8B4_TSPAN13_PTGER2_GADD45G_CD3D_CD3G_CD2_CHRNB4	0.0024 64443	0.269 156	0.86 057	0.994 703
IL2RG_ATP8B4_TSPAN13_PTGER2_GADD45G	0.0020 21895	0.747 034	0.96 4287	0.286 593
IL2RG_CXCL9_SNRPD2_PTGER2_CXCL13_RAB36	0.0001 28071	0.244 948	0.48 1966	0.900 135
TAP1_ATP8B4_CD3D_CD2_CHRNB4	0.0001 53195	0.832 574	0.74 5492	0.965 519
TAP1_ATP8B4_CXCL13_GADD45G_RAB36_CD3G_CHRNB4	0.5926 5089	0.016 15	0.18 6831	0.836 57
TAP1_PTGER2_CXCL13_CD27_CD3G_CHRNB4	0.0115 76221	0.645 708	0.58 2237	0.843 509
CXCL9_PTGER2_CXCL13_CD27_RAB36	0.0038 10452	0.020 37	0.89 1893	0.116 902
TAP1_IL2RG_ATP8B4_SNRPD2_RAB36_CD3G	0.0001 48319	0.004 072	0.62 8716	0.932 03
TAP1_CXCL9_TSPAN13_SNRPD2_PTGER2_GADD45G_CD27_RAB36_CHRNB4	0.1912 41467	0.490 184	0.08 0823	0.933 564
TAP1_IL2RG_CXCL9_ATP8B4_TSPAN13_CXCL13_GADD45G_CD3D_CD3G_CHRNB4	0.4567 06414	0.438 879	0.34 9517	0.686 92
SNRPD2_CXCL13_RAB36_CD3D_CD2	0.3497 5705	0.162 673	0.77 6346	0.367 316
TAP1_ATP8B4_PTGER2_CXCL13_CD3G	0.0775 54349	0.453 809	0.23 3368	0.024 975

TAP1_IL2RG_CXCL9_ATP8B4_SNRPD2_GADD45G_CD27	0.1138 56088	0.189 349	0.29 5631	0.238 574
TAP1_ATP8B4_TSPAN13_SNRPD2_GADD45G_CD27_RA B36_CD2_CHRNB4	0.8389 59364	0.980 837	0.49 3681	0.819 278
ATP8B4_PTGER2_GADD45G_CD27_CD3D_CD3G_CD2_C HRNB4	0.0942 4087	0.898 25	0.46 9049	0.373 516
TAP1_IL2RG_TSPAN13_SNRPD2_GADD45G_CD3G_CHR NB4	0.0799 4984	0.009 873	0.46 4157	0.479 641
TAP1_IL2RG_CXCL9_TSPAN13_SNRPD2_CXCL13_CD27_ RAB36_CD3D_CD3G_CD2_CHRNB4	0.2397 59666	0.695 462	0.81 6617	0.720 275
CXCL9_TSPAN13_SNRPD2_PTGER2_CD27_RAB36_CD3D _CD3G	0.3790 36352	0.350 372	0.98 836	0.128 619
TAP1_TSPAN13_SNRPD2_PTGER2_CXCL13_GADD45G_C D27_RAB36_CD3D_CD2_CHRNB4	0.5171 32833	0.677 256	0.93 0028	0.759 885
IL2RG_ATP8B4_SNRPD2_PTGER2_CD27_CD3D	0.0157 88173	0.464 324	0.91 2014	0.659 336
ATP8B4_SNRPD2_CXCL13_CD27_RAB36_CD3G_CHRNB4	0.1424 38391	0.349 533	0.01 7189	0.773 39
IL2RG_TSPAN13_PTGER2_RAB36_CD2	6.57E- 05	0.331 632	0.81 0566	0.569 492
IL2RG_CXCL9_SNRPD2_PTGER2_CXCL13_CD27_RAB36_ CD3D_CD3G_CD2	0.8931 84274	0.014 216	0.97 5511	0.555 805
TAP1_CXCL9_SNRPD2_RAB36_CD2	0.0001 79165	0.000 853	0.86 4548	0.855 583
TAP1_IL2RG_CXCL9_ATP8B4_TSPAN13_SNRPD2_CXCL1 3_CD27_RAB36_CD3D_CD3G_CD2_CHRNB4	2.58E- 05	0.401 166	0.33 317	0.469 048
TAP1_TSPAN13_SNRPD2_RAB36_CD3D_CD3G	0.0768 84484	0.020 48	0.37 5705	0.312 29
CXCL9_ATP8B4_TSPAN13_SNRPD2_PTGER2_CXCL13_G ADD45G_RAB36_CHRNB4	0.0889 50986	0.238 029	0.45 1686	0.779 207
TAP1_IL2RG_SNRPD2_CXCL13_GADD45G_CD3D	0.1219 35349	0.423 522	0.90 4836	0.999 198
TAP1_IL2RG_ATP8B4_TSPAN13_SNRPD2_PTGER2_CXCL 13_CD3D_CD2	0.0867 30934	0.057 27	0.46 6622	0.296 454
TAP1_CXCL9_ATP8B4_TSPAN13_SNRPD2_PTGER2_GAD D45G_RAB36	0.0081 15459	0.058 513	0.37 0679	0.773 842
IL2RG_ATP8B4_GADD45G_CD27_RAB36_CD3D	0.4501 93311	0.703 009	0.10 4825	0.738 186
CXCL9_PTGER2_CXCL13_CD27_RAB36_CD3G_CD2_CHR NB4	0.3402 57169	0.023 52	0.35 4847	0.827 632
IL2RG_SNRPD2_GADD45G_CHRNB4	0.0012 7894	0.065 179	0.82 1921	0.898 782
IL2RG_CXCL9_ATP8B4_TSPAN13_CXCL13_RAB36_CD3D _CD3G_CD2	1.17E- 07	0.423 441	0.18 5042	0.872 554

TAP1_IL2RG_CXCL9_SNRPD2_PTGER2_GADD45G_RAB36_CD3D	6.67E-06	0.009059	0.100404	0.952333
CXCL9_PTGER2_GADD45G_CD27_CD3D_CD3G_CHRNB4	0.000933326	0.261303	0.126323	0.949628
IL2RG_TSPAN13_SNRPD2_PTGER2_CXCL13_GADD45G_CD27_CD3D_CHRNB4	0.001504996	0.25166	0.718123	0.404967
TAP1_CXCL9_ATP8B4_PTGER2_GADD45G_CHRNB4	0.010663565	0.317937	0.191066	0.497488
TAP1_IL2RG_TSPAN13_SNRPD2_CD3G_CHRNB4	0.015446076	0.500576	0.043307	0.547852
TAP1_IL2RG_CXCL13_CD27_RAB36_CD3D_CHRNB4	0.200784543	0.014125	0.206724	0.448977
TAP1_CXCL9_TSPAN13_PTGER2_CXCL13_GADD45G_CD2_CHRNB4	0.673586444	0.917058	0.141928	0.650265
ATP8B4_TSPAN13_SNRPD2_PTGER2_CXCL13_GADD45G_CD27_CD3G_CHRNB4	0.002001013	0.36924	0.615011	0.253616
PTGER2_CXCL13_CD2	0.071756296	0.521533	0.880233	0.06425
TAP1_CXCL9_SNRPD2_CXCL13_CD27_RAB36_CD3G_CHRNB4	0.45112804	0.24291	0.297069	0.965437
TSPAN13_SNRPD2_CXCL13_CD27_CD3G_CD2_CHRNB4	0.13767853	0.015327	0.341447	0.294813
TAP1_IL2RG_CXCL9_TSPAN13_SNRPD2_CXCL13_GADD45G_CD27_CD3D_CD3G_CD2	0.733264371	0.103676	0.051501	0.847821
IL2RG_CXCL9_ATP8B4_PTGER2_CXCL13_GADD45G_CD3D_CHRNB4	3.12E-07	0.613187	0.596542	0.806681
IL2RG_TSPAN13_SNRPD2_PTGER2_CXCL13_RAB36_CD3G_CD2	0.533357096	0.120346	0.739466	0.609996
CXCL9_SNRPD2_CXCL13_GADD45G_RAB36_CD3D_CD3G_CD2	0.342291677	0.348452	0.287457	0.374114
IL2RG_CXCL9_ATP8B4_SNRPD2_PTGER2_CXCL13_GADD45G_RAB36_CD3D_CD3G_CD2	0.305663326	0.628103	0.310298	0.402945
TAP1_IL2RG_CXCL9_ATP8B4_TSPAN13_SNRPD2_CXCL13_GADD45G_RAB36_CD3G	0.292708585	0.055417	0.141653	0.696088
TAP1_IL2RG_ATP8B4_TSPAN13_PTGER2_CXCL13_GADD45G_CD3D_CD2_CHRNB4	0.231556827	0.249975	0.415835	0.565744
TAP1_ATP8B4_TSPAN13_SNRPD2_PTGER2_RAB36_CD3G_CD2_CHRNB4	0.842910403	0.005963	0.106617	0.470311
CXCL9_ATP8B4_TSPAN13_SNRPD2_GADD45G_CD27_CD3G	1.14E-06	0.026027	0.736855	0.16077
IL2RG_CXCL9_ATP8B4_TSPAN13_SNRPD2_PTGER2_CXCL13_CD3G_CHRNB4	0.032870178	0.027102	0.867829	0.364341
CXCL9_ATP8B4_SNRPD2_PTGER2_CXCL13_RAB36	0.101469234	0.054973	0.107562	0.41794

SNRPD2_RAB36_CD3G_CD2_CHRNB4	0.0041 51158	0.019 319	0.21 7246	0.245 775
TAP1_ATP8B4_CD27_RAB36_CD3G	0.3229 39855	0.479 35	0.20 0283	0.653 782
IL2RG_CXCL9_PTGER2_CD27_CD2	0.0075 07884	0.744 2	0.17 3969	0.436 797
TAP1_CXCL9_ATP8B4_SNRPD2_PTGER2_CXCL13_CD27_RAB36_CD3D_CD3G	0.0523 78394	0.751 788	0.15 6277	0.788 337
TAP1_IL2RG_TSPAN13_CXCL13_GADD45G_CD27_CD3D	0.0029 34248	0.084 493	0.56 9555	0.087 718
TAP1_TSPAN13_SNRPD2_PTGER2_CXCL13_CD3D_CD2	0.1586 58717	0.601 741	0.86 7539	0.381 449
TAP1_ATP8B4_TSPAN13_GADD45G_CD27_CD3D_CD2_CHRNB4	0.0047 07291	0.303 153	0.81 8149	0.222 198
TAP1_CXCL9_TSPAN13_SNRPD2_GADD45G_RAB36_CD2_CHRNB4	0.2548 74971	0.123 872	0.08 8904	0.886 57
IL2RG_CXCL9_SNRPD2_CXCL13_CD27_RAB36_CD3G_CD2_CHRNB4	0.0067 4116	0.204 489	0.21 8659	0.280 392
ATP8B4_CXCL13_GADD45G_RAB36_CD3D_CD2_CHRNB4	0.0034 25742	0.229 558	0.30 5975	0.556 763
IL2RG_ATP8B4_TSPAN13_SNRPD2_PTGER2_CXCL13_CD27_CD3D_CD2	0.7289 24295	0.130 164	0.58 5919	0.120 082
TAP1_IL2RG_CXCL9_RAB36_CD3D_CD2	0.0559 88586	0.042 007	0.42 9043	0.986 373
IL2RG_ATP8B4_GADD45G_RAB36_CD3G_CD2_CHRNB4	0.1427 5037	0.257 38	0.81 5704	0.464 128
TAP1_CXCL9_TSPAN13_GADD45G_RAB36_CD3D_CD3G_CD2	0.0259 33419	0.003 111	0.30 666	0.532 048
IL2RG_CXCL9_ATP8B4_SNRPD2_CD27_RAB36_CD3D	0.0029 46376	0.000 911	0.51 9145	0.882 122
TAP1_CXCL9_SNRPD2_PTGER2_CD3D_CD2	0.0094 50163	0.069 065	0.54 0324	0.767 034
ATP8B4_SNRPD2_PTGER2_GADD45G	0.4536 82229	0.893 407	0.15 6063	0.709 497
CXCL9_ATP8B4_CD2	0.0009 06695	0.860 866	0.07 3457	0.430 952
TAP1_IL2RG_CXCL9_ATP8B4_TSPAN13_PTGER2_CXCL13_GADD45G_CD27_CD3D_CHRNB4	0.9466 37064	0.879 415	0.92 7662	0.349 192
TAP1_IL2RG_ATP8B4_TSPAN13_CXCL13_CD27_CD3D_CD3G_CD2_CHRNB4	0.0078 67454	0.143 863	0.49 0549	0.933 332
IL2RG_ATP8B4_CXCL13_RAB36	0.4596 65303	0.150 656	0.98 592	0.388 258
TAP1_IL2RG_CXCL9_TSPAN13_SNRPD2_GADD45G_RAB36_CD3D	0.2897 92216	0.060 622	0.38 6006	0.528 343

TAP1_IL2RG_CXCL9_CD2_CHRNB4	0.5374 59125	0.228 476	0.84 6276	0.046 326
TAP1_IL2RG_CXCL9_TSPAN13_CXCL13_CD27_RAB36_CD3D	0.0060 1365	0.069 54	0.23 5727	0.586 703
TAP1_SNRPD2_CXCL13_CD3D_CD3G	0.0148 26885	0.011 835	0.53 7768	0.821 431
CXCL9_SNRPD2_CD27_CD3D_CD2_CHRNB4	0.0456 34227	0.332 409	0.53 8888	0.571 864
IL2RG_CXCL9_ATP8B4_CXCL13_CD27_CD3G	0.9062 82826	0.964 181	0.54 33	0.238 754
TAP1_CXCL9_ATP8B4_SNRPD2_CXCL13_GADD45G_RAB36	0.1147 57808	0.003 107	0.54 9062	0.137 409
IL2RG_CXCL9_ATP8B4_TSPAN13_PTGER2_GADD45G_CD27_RAB36_CD3D	1.46E-06	0.189 953	0.81 898	0.706 513
CXCL9_SNRPD2_CD3D_CHRNB4	0.0086 26545	0.063 713	0.97 8552	0.655 101
ATP8B4_SNRPD2_GADD45G_CD3D_CD3G_CHRNB4	0.8385 58229	0.007 93	0.31 9089	0.557 908
TAP1_CXCL9_SNRPD2_CXCL13_RAB36_CD3G_CHRNB4	0.5489 16577	0.194 518	0.73 2994	0.185 13
TAP1_IL2RG_TSPAN13_PTGER2_GADD45G_CHRNB4	0.0600 11661	0.001 153	0.12 229	0.777 497
TAP1_SNRPD2_PTGER2_CD27_RAB36_CD2_CHRNB4	0.0008 65962	0.213 147	0.62 0481	0.248 615
TAP1_IL2RG_SNRPD2_GADD45G_CD27_CD3D_CD3G	0.0171 43501	0.000 739	0.56 3077	0.808 993
TAP1_SNRPD2_PTGER2_GADD45G_RAB36_CD3D_CD3G_CD2_CHRNB4	0.0011 28585	0.789 408	0.08 3596	0.788 792
TAP1_IL2RG_CXCL9_ATP8B4_TSPAN13_PTGER2_CXCL13_GADD45G_CD3D_CD3G_CD2_CHRNB4	0.0005 51016	0.360 166	0.72 7402	0.556 132
IL2RG_ATP8B4_SNRPD2_PTGER2_CXCL13_GADD45G_CD2	0.0110 33982	0.707 434	0.75 3701	0.343 381
IL2RG_CXCL9_TSPAN13_SNRPD2_CXCL13_GADD45G_CD27_RAB36_CD3D_CD2	0.0059 58665	0.034 045	0.09 9353	0.241 746
TAP1_IL2RG_CXCL9_SNRPD2_PTGER2_CXCL13_RAB36_CD3D_CD3G_CD2	0.0750 30448	0.467 201	0.08 345	0.681 594
TAP1_IL2RG_ATP8B4_TSPAN13_SNRPD2_CXCL13_GADD45G_CD27_CD3G_CD2_CHRNB4	0.0004 22275	0.524 625	0.42 6971	0.708 021
IL2RG_ATP8B4_TSPAN13_SNRPD2_PTGER2_CD3G_CD2_CHRNB4	0.1533 90337	0.353 469	0.47 1701	0.216 252
IL2RG_TSPAN13_SNRPD2_PTGER2_RAB36_CD3G_CD2_CHRNB4	6.39E-05	0.196 601	0.26 6798	0.854 982
TAP1_IL2RG_CXCL9_ATP8B4_SNRPD2_CD27	0.0021 16176	0.009 471	0.55 1255	0.620 551

TSPAN13_SNRPD2_GADD45G_RAB36_CD3D_CD3G_CHRNB4	0.0391 50107	0.072 143	0.23 8277	0.651 578
TAP1_ATP8B4_GADD45G_CD27_CHRNB4	0.1004 82678	0.426 992	0.42 7035	0.525 13
TAP1_IL2RG_TSPAN13_SNRPD2_PTGER2_CXCL13_GADD45G_RAB36_CD3D_CD3G	0.7564 28178	0.863 749	0.21 9172	0.255 504
TAP1_IL2RG_CXCL9_PTGER2_CXCL13_GADD45G_RAB36_CD3D_CD3G_CD2	0.7419 88546	0.134 161	0.58 7922	0.197 536
IL2RG_CXCL9_ATP8B4_SNRPD2_PTGER2_CXCL13_CD27_CD3D_CD3G_CD2	0.6589 23549	0.488 596	0.89 4221	0.569 573
CXCL9_ATP8B4_TSPAN13_PTGER2_CD3D_CD3G	0.2290 53767	0.006 835	0.91 9831	0.216 43
IL2RG_CXCL9_SNRPD2_PTGER2_CD27_RAB36_CHRNB4	0.8979 94559	0.926 423	0.30 8416	0.721 413
TAP1_CXCL9_ATP8B4_SNRPD2_PTGER2_CXCL13_GADD45G_CD27_CD3D_CD3G_CHRNB4	0.9453 26148	0.318 342	0.99 999	0.600 438
TAP1_GADD45G_CD27_CD3D_CD3G_CD2	0.0151 4618	0.023 873	0.50 4874	0.464 65
TAP1_IL2RG_CXCL9_ATP8B4_SNRPD2_CXCL13_GADD45G_CD27_CD3G	0.0794 23177	0.021 948	0.02 1834	0.119 062
TAP1_IL2RG_ATP8B4_GADD45G_CD3G_CD2	0.5672 15532	0.832 874	0.51 3961	0.667 727
TAP1_IL2RG_TSPAN13_SNRPD2_CD2_CHRNB4	0.0154 69542	0.593 213	0.10 2964	0.863 147
TAP1_IL2RG_CXCL9_SNRPD2_CXCL13_GADD45G_CD2_CHRNB4	0.5040 56018	0.192 884	0.87 271	0.424 144
TAP1_ATP8B4_GADD45G_CD27_RAB36_CD3D	0.0498 34314	0.202 772	0.18 2833	0.620 257
IL2RG_ATP8B4_TSPAN13_PTGER2_GADD45G_CD27_CHRNB4	0.3894 56362	0.631 151	0.86 3765	0.910 695
ATP8B4_TSPAN13_SNRPD2_PTGER2_CXCL13_GADD45G_CD27_RAB36_CD3D_CD2	0.0235 85607	0.307 929	0.54 2673	0.052 762
CXCL9_ATP8B4_CXCL13_GADD45G_RAB36_CD3D_CD3G	0.0001 10609	0.008 802	0.19 258	0.784 75
TAP1_IL2RG_ATP8B4_SNRPD2_CXCL13_GADD45G_RAB36_CD3G_CD2	0.8949 36433	0.953 5	0.68 5964	0.431 304
ATP8B4_TSPAN13_SNRPD2_GADD45G_CD27_CHRNB4	0.0767 66787	0.026 885	0.53 0796	0.965 504
TAP1_CXCL9_TSPAN13_CD2	0.0011 02539	0.221 857	0.87 3982	0.684 137
ATP8B4_PTGER2_CD3D_CD3G_CD2	0.0028 14865	0.557 728	0.93 3192	0.503 856
CXCL13_GADD45G_CD3D_CD3G_CHRNB4	0.5839 79821	0.229 539	0.64 2768	0.227 125

IL2RG_ATP8B4_TSPAN13_PTGER2_CXCL13_CD27_CD3D_CD3G_CD2	0.6809 9591	0.077 831	0.20 1756	0.084 264
TAP1_ATP8B4_TSPAN13_SNRPD2_GADD45G_CD27_CD3D_CD3G	0.1068 00677	0.660 937	0.70 9788	0.521 303
IL2RG_ATP8B4_SNRPD2_PTGER2_CXCL13_CD2_CHRNB4	0.0121 20471	0.001 478	0.81 9033	0.653 714
TAP1_IL2RG_ATP8B4_SNRPD2_PTGER2_CXCL13_GADD45G_CD3G	0.0032 19554	0.207 712	0.38 0056	0.590 072
CXCL9_ATP8B4_PTGER2_GADD45G_CD3D	0.7640 45737	0.609 254	0.61 412	0.367 137
PTGER2_CXCL13_CD27_RAB36_CD3D_CD2	0.7764 7103	0.027 875	0.44 2011	0.661 916
IL2RG_CXCL9_SNRPD2_PTGER2_GADD45G_CD27_RAB36_CD3D_CHRNB4	0.6773 85601	0.228 776	0.72 7028	0.916 784
IL2RG_CXCL9_ATP8B4_PTGER2_RAB36_CD3D_CHRNB4	0.0113 01277	0.573 969	0.08 5612	0.233 767
TAP1_IL2RG_CXCL9_ATP8B4_TSPAN13_SNRPD2_PTGER2_GADD45G_CHRNB4	0.0217 46871	0.335 617	0.86 7346	0.926 25
TAP1_CXCL9_TSPAN13_SNRPD2_GADD45G_CD2_CHRNB4	0.0248 32772	0.020 255	0.81 7128	0.679 096
TAP1_PTGER2_CXCL13_GADD45G_CD27_CHRNB4	0.8343 69062	0.241 392	0.48 9485	0.253 533
CXCL9_TSPAN13_PTGER2_CXCL13_CD27_CD3D_CHRNB4	0.0108 64654	0.189 905	0.48 3421	0.292 91
IL2RG_ATP8B4_TSPAN13_SNRPD2_GADD45G_CD2	0.1536 81771	0.421 867	0.07 3708	0.981 828
CXCL9_PTGER2_CXCL13_GADD45G_RAB36_CD3G_CD2_CHRNB4	0.1749 9251	0.436 435	0.60 2415	0.857 706
IL2RG_ATP8B4_TSPAN13_CXCL13_GADD45G_CD3G	0.3440 97078	0.237 357	0.18 8652	0.667 727
TSPAN13_SNRPD2_PTGER2_GADD45G_CD27_RAB36_CD3G_CD2	0.0326 24755	0.907 658	0.77 4115	0.041 389
CXCL9_TSPAN13_SNRPD2_PTGER2_CXCL13_CD27_RAB36_CD3D_CD3G_CD2	0.1767 43783	0.658 095	0.74 1478	0.176 416
TAP1_IL2RG_CXCL9_ATP8B4_SNRPD2_PTGER2_GADD45G_CD27_RAB36_CD3G_CD2	0.0218 17576	0.794 825	0.50 2605	0.202 275
IL2RG_ATP8B4_TSPAN13_CXCL13_GADD45G_CD27_CD3D_CD3G_CHRNB4	5.32E-05	0.038 127	0.99 4808	0.502 419
TAP1_IL2RG_ATP8B4_TSPAN13_SNRPD2_RAB36_CD3G_CHRNB4	0.0053 25062	0.413 294	0.65 7903	0.822 396
TAP1_IL2RG_ATP8B4_SNRPD2_GADD45G_CD27_RAB36_CD3G_CHRNB4	0.2201 43127	0.374 22	0.83 2997	0.907 851
ATP8B4_SNRPD2_CXCL13_GADD45G_CD27_CD3D_CD2_CHRNB4	0.6470 80485	0.015 256	0.54 8778	0.605 463

TAP1_ATP8B4_TSPAN13_PTGER2_GADD45G_CD27_RAB36_CD3G_CHRNB4	0.7019 32146	0.886 386	0.89 2148	0.381 316
TAP1_CXCL9_ATP8B4_TSPAN13_SNRPD2_PTGER2_CXCL13_GADD45G_CD27_CD3D_CD3G	0.1370 01496	0.220 654	0.44 9137	0.687 794
TAP1_IL2RG_CXCL9_ATP8B4_CXCL13_GADD45G_CD3D_CD3G_CD2	0.6741 22196	0.980 952	0.87 4521	0.732 937
TAP1_CXCL9_CD27_CD3D_CD2	0.0982 17641	0.092 822	0.95 1681	0.687 78
TAP1_CXCL9_TSPAN13_CD27_RAB36_CD2_CHRNB4	0.0117 72199	0.754 937	0.94 2947	0.371 483
IL2RG_CXCL9_TSPAN13_SNRPD2_PTGER2_RAB36_CD3D	0.2204 64165	0.000 491	0.76 8679	0.793 731
CXCL9_ATP8B4_TSPAN13_SNRPD2_PTGER2_CD27_CD3D_CD3G_CD2_CHRNB4	0.3080 55693	0.227 789	0.29 2313	0.535 765
ATP8B4_TSPAN13_PTGER2_CXCL13_CD27_CD3G_CD2	0.7957 42079	0.415 235	0.69 1021	0.753 11
IL2RG_CXCL9_PTGER2_GADD45G_RAB36_CD3G_CD2	0.8301 9947	0.023 813	0.38 2453	0.879 453
IL2RG_ATP8B4_PTGER2_GADD45G_CD27_CD3D_CHRNB4	0.0895 71819	0.852 462	0.58 7821	0.927 943
TAP1_IL2RG_GADD45G_CD27_RAB36_CD3D_CD3G_CHRNB4	0.5082 96317	0.214 092	0.84 282	0.898 424
TAP1_CXCL9_ATP8B4_TSPAN13_SNRPD2_PTGER2_GADD45G_CD27_CD2_CHRNB4	3.65E-05 05	0.173 424	0.50 3675	0.619 271
SNRPD2_CXCL13_GADD45G_CD27_CD3D_CD3G_CD2_CHRNB4	0.0006 25962	0.007 472	0.51 3914	0.633 279
TAP1_CXCL9_ATP8B4_PTGER2_CXCL13_RAB36_CD2	0.0593 74325	0.106 753	0.19 3509	0.094 517
IL2RG_CXCL9_ATP8B4_TSPAN13_SNRPD2_GADD45G_CD27_CD3D_CD3G_CD2	0.0055 29765	0.348 508	0.40 2236	0.957 474
TAP1_IL2RG_CXCL13_GADD45G_CD2_CHRNB4	0.9738 80958	0.015 014	0.52 527	0.119 887
TAP1_TSPAN13_SNRPD2_PTGER2_CXCL13_CD3D_CHRNB4	0.5197 18197	0.005 187	0.64 5333	0.878 694
CXCL9_TSPAN13_PTGER2_RAB36	0.2385 63971	0.037 375	0.18 4741	0.817 774
TAP1_TSPAN13_CXCL13_RAB36_CD2_CHRNB4	0.0094 64819	0.179 62	0.83 3749	0.941 669
TAP1_IL2RG_PTGER2	0.1769 3113	0.761 409	0.49 9985	0.839 618
IL2RG_ATP8B4_TSPAN13_GADD45G_CD27_CD2	0.0333 10153	0.328 038	0.58 739	0.138 469
TAP1_ATP8B4_SNRPD2_PTGER2_GADD45G_CD27_CD2	0.9406 77178	0.001 207	0.12 9836	0.830 961

IL2RG_PTGER2_GADD45G_CD27_CD3D	0.1676 87484	0.071 691	0.50 6745	0.623 987
CXCL9_TSPAN13_SNRPD2_CXCL13_GADD45G_CD27_CD3D_CD3G	0.0877 67535	0.035 783	0.90 7576	0.730 623
IL2RG_CXCL9_ATP8B4_TSPAN13_SNRPD2_PTGER2_CXCL13_RAB36_CD3D_CHRNB4	0.6393 32403	0.064 324	0.14 3218	0.750 042
CXCL9_ATP8B4_CXCL13_CD27_RAB36_CD3G_CD2	0.5182 83687	0.017 154	0.91 0903	0.251 532
IL2RG_CXCL9_TSPAN13_SNRPD2_PTGER2_GADD45G_RAB36_CD3G_CHRNB4	0.0636 68444	0.218 068	0.05 8728	0.651 726
TAP1_CXCL9_ATP8B4_TSPAN13_SNRPD2_CXCL13_CD3D_CD3G_CD2	1.85E-05	0.021 783	0.80 576	0.825 649
IL2RG_TSPAN13_SNRPD2_PTGER2_CXCL13_GADD45G_CD3D_CHRNB4	9.91E-05	0.037 901	0.80 9695	0.786 589
TAP1_CXCL9_PTGER2_CXCL13_GADD45G_CD3D_CHRNB4	0.0810 91755	0.148 18	0.16 6279	0.569 062
IL2RG_CXCL9_TSPAN13_PTGER2_GADD45G_CD3D_CD3G_CHRNB4	0.2805 8263	0.010 915	0.76 4446	0.985 038
IL2RG_ATP8B4_PTGER2_GADD45G	0.0004 97366	0.579 66	0.79 7213	0.251 545
PTGER2_GADD45G_CD27_RAB36_CD3G_CD2	0.5237 07847	0.002 597	0.95 3123	0.442 146
TAP1_IL2RG_CXCL9_ATP8B4_SNRPD2_GADD45G_RAB36_CD3D_CHRNB4	0.4553 6538	0.086 343	0.89 9295	0.134 202
TAP1_SNRPD2_CXCL13_CD27_RAB36_CD3G_CHRNB4	0.2047 53744	0.478 401	0.01 5819	0.117 068
TAP1_IL2RG_CXCL9_SNRPD2_PTGER2_CXCL13_RAB36_CD3G	6.03E-05	0.028 806	0.91 4645	0.843 137
TAP1_IL2RG_CXCL9_ATP8B4_SNRPD2_CXCL13_GADD45G_CD3D_CD3G_CHRNB4	0.0006 33554	0.341 817	0.99 9068	0.592 857
CXCL9_TSPAN13_SNRPD2_CXCL13_GADD45G_CD2	0.9101 26752	0.128 584	0.60 2296	0.681 929
TAP1_CXCL13_CD27_CD3D_CD3G	0.2747 69914	0.082 3	0.18 9099	0.403 656
TAP1_IL2RG_CXCL9_ATP8B4_TSPAN13_PTGER2_CXCL13_GADD45G_CD27_RAB36_CD2	0.0574 16623	0.078 857	0.55 4169	0.320 08
TAP1_IL2RG_CXCL9_RAB36_CD3D_CD2_CHRNB4	0.1390 37735	0.054 088	0.54 6298	0.918 725
TAP1_CXCL9_TSPAN13_RAB36_CD3D_CD3G_CHRNB4	0.3137 80956	0.004 013	0.51 145	0.809 02
IL2RG_SNRPD2_GADD45G_CD27_RAB36_CD3G	0.7009 46882	0.150 328	0.25 3091	0.728 473
TAP1_CXCL9_SNRPD2_CXCL13_CD27_CD2_CHRNB4	0.1005 83758	0.384 292	0.32 2233	0.154 588

IL2RG_ATP8B4_TSPAN13_SNRPD2_GADD45G_CD27_RA B36_CD3D_CHRN4	0.9578 62365	0.980 657	0.96 1863	0.710 352
CXCL9_TSPAN13_SNRPD2_CXCL13_CD3D_CD3G_CD2_C HRNB4	0.0014 28781	0.032 257	0.21 5861	0.573 136
TAP1_ATP8B4_TSPAN13_SNRPD2_CXCL13_GADD45G_C D3D_CD2	0.2859 98362	0.289 714	0.67 6691	0.426 926
IL2RG_CXCL9_ATP8B4_PTGER2_CXCL13_CD3D_CHRN4	0.0045 84699	0.305 196	0.90 9031	0.057 71
TAP1_IL2RG_CXCL9_PTGER2_CXCL13_GADD45G_RAB36 _CD3G_CD2_CHRN4	0.8421 86829	0.199 623	0.46 1447	0.646 182
SNRPD2_PTGER2_CXCL13_GADD45G_CD27_RAB36_CD 3D_CHRN4	0.0101 39289	0.000 942	0.93 7535	0.612 727
CXCL9_ATP8B4_TSPAN13_CD27_RAB36_CD3G_CD2_CH RNB4	0.6286 90228	0.477 835	0.85 974	0.588 338
ATP8B4_SNRPD2_RAB36_CD2	8.32E- 07	0.107 87	0.28 6543	0.675 643
TAP1_IL2RG_ATP8B4_TSPAN13_CXCL13_GADD45G_CD2 7_CD3D_CD2	0.0183 15398	0.289 311	0.60 9517	0.383 782
TAP1_IL2RG_CXCL9_GADD45G_CD27	0.0037 89375	0.088 653	0.21 1102	0.594 956
TSPAN13_SNRPD2_RAB36_CD3G_CD2_CHRN4	0.6086 29662	0.000 441	0.27 5655	0.285 957
TAP1_IL2RG_ATP8B4_SNRPD2_CXCL13_RAB36_CD3G	0.0148 02153	0.015 318	0.50 5198	0.537 437
TAP1_CXCL9_ATP8B4_TSPAN13_SNRPD2_GADD45G_C D27_RAB36_CD2	6.88E- 07	0.035 449	0.89 3969	0.713 098
TAP1_CXCL9_TSPAN13_SNRPD2_PTGER2_CXCL13_GAD D45G_CD27_RAB36_CD3D	0.3669 77289	0.094 334	0.15 6327	0.752 666
CXCL9_ATP8B4_CXCL13_GADD45G_CD27_RAB36_CD3D _CHRN4	0.7688 88544	0.001 196	0.02 7046	0.599 062
IL2RG_ATP8B4_TSPAN13_CD27_RAB36	0.0006 12885	0.513 855	0.74 5915	0.790 427
ATP8B4_TSPAN13_SNRPD2_PTGER2_CXCL13_CD27_RA B36_CD3D_CD3G	0.0009 48778	0.249 962	0.10 2285	0.025 043
IL2RG_CXCL9_ATP8B4_TSPAN13_SNRPD2_PTGER2_GAD D45G_CD3D_CD3G	0.8229 022	0.248 951	0.49 2205	0.906 104
TAP1_ATP8B4_TSPAN13_SNRPD2_PTGER2_CXCL13_GA DD45G_CD3G	0.0756 37579	0.364 377	0.43 2489	0.370 63
TAP1_CXCL9_ATP8B4_TSPAN13_SNRPD2_CXCL13_GAD D45G_CD27_RAB36_CD3D	0.0569 58918	0.424 257	0.93 654	0.861 904
TAP1_IL2RG_ATP8B4_SNRPD2_PTGER2_GADD45G_CD2 7_RAB36_CD3D_CD2_CHRN4	0.5632 37935	0.024 41	0.23 3177	0.058 284
IL2RG_CXCL9_SNRPD2_PTGER2_RAB36_CHRN4	0.0216 87404	0.028 013	0.73 9384	0.195 399

CXCL9_TSPAN13_CXCL13_GADD45G_CD3D_CD2_CHRN B4	0.7571 95972	0.890 816	0.84 6628	0.405 248
TAP1_IL2RG_ATP8B4_TSPAN13_SNRPD2_PTGER2_CD27 _CD3D_CD2	0.6578 48262	0.000 86	0.84 0586	0.695 141
TAP1_IL2RG_CXCL9_ATP8B4_PTGER2_CXCL13_GADD45 G_RAB36_CD3D	0.0234 72531	0.198 337	0.91 2387	0.230 963
TAP1_IL2RG_ATP8B4_SNRPD2_PTGER2_CXCL13_GADD4 5G_CD27_CD3D_CHRNB4	0.0003 32666	0.015 86	0.30 1962	0.944 189
IL2RG_TSPAN13_PTGER2_CD27_RAB36_CD3D_CD3G	0.5206 59842	0.094 226	0.45 7699	0.866 611
IL2RG_CXCL9_ATP8B4_SNRPD2_PTGER2_CD27_RAB36_ CD3G	8.43E- 06	0.208 135	0.72 9271	0.941 095
TAP1_IL2RG_CXCL9_ATP8B4_TSPAN13_CXCL13_GADD4 5G_CD27_CD3D_CHRNB4	0.1672 52125	0.995 384	0.47 2125	0.141 834
TAP1_CXCL9_SNRPD2_CXCL13_CD27_CD3G_CHRNB4	0.5572 58471	0.213 036	0.81 0163	0.436 581
TAP1_ATP8B4_CXCL13_GADD45G_RAB36_CD2_CHRNB 4	0.1016 79704	0.069 531	0.56 8412	0.978 27
IL2RG_CXCL9_ATP8B4_SNRPD2_PTGER2_CD3D_CD3G_C D2	0.0003 43404	0.615 274	0.20 057	0.627 265
IL2RG_TSPAN13_GADD45G_RAB36_CD3D_CD3G	0.0118 45358	0.002 128	0.91 5395	0.771 671
IL2RG_ATP8B4_TSPAN13_SNRPD2_RAB36_CD3D_CD3G _CD2	0.0588 00555	0.891 593	0.91 9699	0.265 135
TAP1_ATP8B4_PTGER2_CXCL13_GADD45G_CD27_RAB3 6_CD2_CHRNB4	0.0043 64693	0.045 305	0.31 3826	0.901 217
IL2RG_ATP8B4_TSPAN13_GADD45G	0.6726 24446	0.003 164	0.38 2776	0.223 183
IL2RG_CXCL9_TSPAN13_SNRPD2_PTGER2_CXCL13_GAD D45G_CD27_RAB36	0.0061 41038	0.876 764	0.12 9865	0.707 272
IL2RG_ATP8B4_SNRPD2_PTGER2_CXCL13_GADD45G_R AB36_CD3G_CHRNB4	2.91E- 07	0.057 374	0.41 3592	0.462 481
CXCL9_TSPAN13_SNRPD2_CXCL13_GADD45G_CD27_R AB36_CD3G_CD2_CHRNB4	0.1451 92475	0.283 072	0.38 0689	0.793 188
TAP1_CXCL9_ATP8B4_TSPAN13_PTGER2_RAB36_CD2_C HRNB4	0.0105 54429	0.112 308	0.65 2778	0.626 861
TAP1_IL2RG_ATP8B4_SNRPD2_GADD45G_CD27_RAB36 _CD3G	0.1622 74143	0.415 347	0.22 3876	0.332 241
IL2RG_PTGER2_CXCL13_CD3D_CHRNB4	0.0720 81178	0.053 311	0.71 6526	0.319 62
TAP1_IL2RG_TSPAN13_GADD45G_CD27_RAB36	0.0004 45452	0.047 839	0.57 4119	0.254 493
TAP1_IL2RG_CXCL9_TSPAN13_GADD45G_CD3D_CHRN B4	0.0672 71327	0.416 101	0.44 5316	0.239 663

TAP1_TSPAN13_SNRPD2_PTGER2_CXCL13_GADD45G_CD3G_CHRNB4	0.0397 02598	0.018 855	0.66 1635	0.871 513
TAP1_IL2RG_CD3G_CHRNB4	0.3312 63173	0.632 226	0.17 8708	0.909 357
TAP1_CXCL9_ATP8B4_SNRPD2_PTGER2_GADD45G_CD27_RAB36_CD2_CHRNB4	0.2017 63278	0.380 795	0.95 3202	0.856 232
CXCL9_ATP8B4_TSPAN13_SNRPD2_GADD45G_RAB36_CD3D_CD2_CHRNB4	0.0001 21425	0.564 776	0.52 1437	0.960 804
TAP1_IL2RG_ATP8B4_TSPAN13_PTGER2_CXCL13_GADD45G_RAB36_CD3G	0.0204 18624	0.014 738	0.27 3817	0.389 392
ATP8B4_PTGER2_CXCL13_GADD45G_CHRNB4	0.0531 61915	0.787 826	0.26 7035	0.410 256
SNRPD2_CXCL13_GADD45G_CD27_CD3D_CD2_CHRNB4	0.0722 3329	0.143 126	0.70 0089	0.901 659
TAP1_CXCL9_ATP8B4_TSPAN13_CXCL13_GADD45G_CD27_RAB36_CD3G	4.70E- 07	0.061 367	0.24 8737	0.242 466
TAP1_ATP8B4_TSPAN13_SNRPD2_PTGER2_CXCL13_CD27_RAB36_CD3D_CD2_CHRNB4	0.0003 59849	0.150 476	0.50 5258	0.496 466
CXCL9_ATP8B4_PTGER2_CXCL13_GADD45G_CD27_CD3G	0.6155 28837	0.076 91	0.98 0214	0.724 369
TAP1_ATP8B4_SNRPD2_PTGER2_CXCL13_GADD45G_CD27_CD2	0.0140 70247	0.068 952	0.41 7906	0.334 426
TAP1_TSPAN13_PTGER2_GADD45G_CD27_RAB36	0.2305 80593	0.156 301	0.27 1148	0.770 212
TAP1_TSPAN13_SNRPD2_PTGER2_CXCL13_GADD45G_RAB36_CD3D_CD3G_CHRNB4	0.6698 27475	0.995 493	0.80 6681	0.110 948
CXCL9_TSPAN13_CXCL13_RAB36_CD3G_CD2_CHRNB4	0.0739 4007	7.06E -05	0.16 8952	0.663 234
TAP1_IL2RG_CXCL9_TSPAN13_PTGER2_CXCL13_GADD45G_CD3D_CD2	0.0106 10718	0.124 195	0.89 3976	0.977 453
TAP1_TSPAN13_CXCL13_GADD45G_CD27_RAB36_CD3D_CD3G_CD2	0.0039 66012	0.051 18	0.78 0555	0.436 975
IL2RG_ATP8B4_PTGER2_CXCL13_GADD45G_RAB36_CHRNB4	0.0002 30775	0.071 807	0.67 5627	0.531 945
IL2RG_CXCL9_ATP8B4_TSPAN13_SNRPD2_PTGER2_GADD45G_CD3D_CD3G_CD2	4.24E- 08	0.305 294	0.50 6357	0.607 764
ATP8B4_PTGER2_GADD45G_CD3G	0.0001 58052	0.588 095	0.69 7785	0.298 415
TAP1_CXCL9_SNRPD2_CD27_RAB36_CD3D_CD3G_CHRNB4	0.0160 72692	0.024 961	0.92 3634	0.575 93
TAP1_IL2RG_CXCL9_ATP8B4_SNRPD2_CD2_CHRNB4	0.1112 57392	0.036 266	0.11 4787	0.882 468
TAP1_IL2RG_ATP8B4_TSPAN13_PTGER2_GADD45G_CD27_RAB36_CD2_CHRNB4	0.2373 17741	0.257 854	0.91 1737	0.913 553

IL2RG_PTGER2_CXCL13_CD3D_CD2	0.0297 13523	0.192 651	0.99 1625	0.574 059
TAP1_TSPAN13_PTGER2_CXCL13_CD27_RAB36_CD2_C HRNB4	0.3407 06381	0.737 895	0.77 665	0.374 837
TAP1_IL2RG_CXCL9_SNRPD2_CXCL13_CD3D_CD3G	0.0092 47778	0.004 487	0.27 7993	0.714 525
IL2RG_ATP8B4_SNRPD2_GADD45G_CD27_CD3D_CD2_C HRNB4	0.0055 35525	0.121 231	0.30 9443	0.401 665
ATP8B4_TSPAN13_SNRPD2_PTGER2_CD27_RAB36_CD3 D_CHRN4	0.9655 46296	0.028 034	0.71 4587	0.276 567
TAP1_CXCL9_ATP8B4_TSPAN13_PTGER2_CXCL13_GAD D45G_RAB36_CHRN4	0.1098 05931	0.351 599	0.72 821	0.622 336
CXCL9_TSPAN13_CXCL13_GADD45G_CHRN4	0.5088 78068	0.434 654	0.96 2677	0.354 638
TAP1_IL2RG_CXCL13_GADD45G_CD3G_CD2_CHRN4	0.0870 97833	0.009 296	0.69 252	0.380 987
TAP1_TSPAN13_SNRPD2_CXCL13_CD27_RAB36	0.1054 08569	0.591 605	0.06 2398	0.297 913
TAP1_CXCL9_SNRPD2_CXCL13_GADD45G_RAB36_CD3 D_CHRN4	0.5010 42669	0.135 401	0.23 8177	0.040 941
IL2RG_SNRPD2_PTGER2_RAB36_CD3D_CD2	0.0042 92696	0.975 296	0.78 9634	0.077 409
CXCL9_SNRPD2_GADD45G_CD3D_CD3G	0.0008 01119	0.000 202	0.89 5704	0.727 146
IL2RG_TSPAN13_PTGER2_CD27_RAB36_CD3G_CD2_CH RNB4	0.5594 0754	0.003 848	0.45 3708	0.899 618
TAP1_PTGER2_CXCL13_CD27_RAB36_CD3D_CD3G_CHR NB4	0.0501 6659	0.132 185	0.82 6267	0.785 119
TAP1_CXCL9_SNRPD2_PTGER2_CXCL13_CD3D_CD2	0.5549 62288	0.006 003	0.99 152	0.650 69
TAP1_ATP8B4_GADD45G_CD3D_CD2_CHRN4	0.0060 45642	0.375 542	0.30 4011	0.448 389
IL2RG_CXCL9_PTGER2_RAB36_CD3G_CD2_CHRN4	0.0224 6568	0.159 02	0.98 5848	0.679 382
CXCL9_ATP8B4_TSPAN13_CXCL13_RAB36_CHRN4	0.0046 20959	0.321 724	0.59 7945	0.783 123
CXCL9_ATP8B4_TSPAN13_GADD45G_CD3G_CHRN4	0.0747 78076	0.819 482	0.72 9485	0.756 229
TAP1_CXCL9_TSPAN13_PTGER2_GADD45G_RAB36_CD3 D_CD2_CHRN4	0.7417 77173	0.004 19	0.85 0546	0.995 967
CXCL9_TSPAN13_SNRPD2_CD27_RAB36_CD3D_CD3G_ CD2_CHRN4	0.0081 31621	0.685 358	0.12 4899	0.865 999
IL2RG_TSPAN13_SNRPD2_PTGER2_CXCL13_GADD45G_ CD3D_CD2_CHRN4	0.6475 91264	0.406 37	0.30 7497	0.872 893

TAP1_IL2RG_ATP8B4_TSPAN13_PTGER2_RAB36_CD3G_CHRNB4	0.0016 97247	0.333 43	0.77 1527	0.940 723
CXCL9_ATP8B4_TSPAN13_PTGER2_GADD45G_CD27_RAB36_CD3G_CHRNB4	0.9082 09311	0.744 698	0.93 9773	0.306 987
IL2RG_CXCL9_TSPAN13_PTGER2_CXCL13_RAB36_CD3G_CD2_CHRNB4	0.6968 05129	0.678 344	0.36 8197	0.624 637
TAP1_TSPAN13_SNRPD2_CXCL13_CD27_CD3G	0.1415 36775	0.060 708	0.67 5065	0.034 484
CD3D_CD2_CHRNB4	0.3091 33132	0.003 919	0.75 5302	0.915 318
TAP1_CXCL9_ATP8B4_TSPAN13_SNRPD2_GADD45G_RAB36_CD3G_CD2_CHRNB4	0.1991 96153	0.324 606	0.57 6533	0.711 881
IL2RG_CXCL9_TSPAN13_SNRPD2_RAB36_CD3G	0.2796 75266	0.341 99	0.06 1355	0.731 723
IL2RG_CXCL9_PTGER2_CXCL13_RAB36_CD3D_CD3G	0.8468 94926	0.472 02	0.59 6719	0.968 162
SNRPD2_PTGER2_GADD45G_CD3D_CD2_CHRNB4	0.3921 24711	0.125 383	0.46 2574	0.202 761
CXCL9_ATP8B4_TSPAN13_SNRPD2_CD3G_CHRNB4	4.09E- 07	0.227 941	0.44 7389	0.592 563
TAP1_IL2RG_CXCL9_TSPAN13_SNRPD2_PTGER2_CXCL13_GADD45G_RAB36_CD3G	4.08E- 05	0.006 593	0.48 5163	0.384 689
TAP1_CXCL9_ATP8B4_GADD45G_CD27_RAB36_CD3G	2.52E- 07	0.011 315	0.29 7587	0.197 099
TAP1_CXCL9_PTGER2_GADD45G_CD27_CD2_CHRNB4	0.8232 67279	0.499 082	0.88 688	0.408 813
IL2RG_CXCL9_ATP8B4_GADD45G_CD27_RAB36_CD3D_CD3G_CHRNB4	0.0208 53953	0.094 892	0.37 0467	0.889 391
TAP1_IL2RG_CXCL9_ATP8B4_SNRPD2_PTGER2_CXCL13_CD3D_CD2	0.0052 33795	0.910 496	0.49 7641	0.804 563
IL2RG_CXCL9_ATP8B4_PTGER2_CXCL13_GADD45G_RAB36_CHRNB4	0.0575 27427	0.037 93	0.93 6813	0.544 456
IL2RG_ATP8B4_TSPAN13_SNRPD2_GADD45G_CD27_RAB36	0.0008 67431	0.025 023	0.87 8914	0.596 057
IL2RG_ATP8B4_TSPAN13_SNRPD2_PTGER2_CXCL13_GADD45G_RAB36_CD3D_CHRNB4	0.0172 25315	0.674 963	0.86 2033	0.682 041
TAP1_CXCL9_ATP8B4_SNRPD2_PTGER2_CXCL13_GADD45G_RAB36_CHRNB4	0.3240 17959	0.224 437	0.38 5116	0.276 509
ATP8B4_SNRPD2_PTGER2_RAB36_CD3G_CD2_CHRNB4	0.3120 66525	0.749 435	0.49 2559	0.839 871
TAP1_IL2RG_SNRPD2_PTGER2_GADD45G_CD27_RAB36_CD3D_CD2	0.8813 82242	0.707 006	0.11 6233	0.023 147
IL2RG_SNRPD2_CXCL13_RAB36_CD3D_CD3G_CD2_CHRNB4	0.0146 20879	0.006 804	0.52 7005	0.441 101

CXCL9_TSPAN13_GADD45G_RAB36_CHRNB4	0.6715 39124	0.482 982	0.83 6425	0.721 465
TAP1_TSPAN13_PTGER2_CD3D	0.3969 84613	0.017 459	0.44 7245	0.843 882
TAP1_CXCL9_CXCL13_GADD45G_CD27_RAB36_CD3D_CD3G	0.0220 04033	0.004 601	0.21 6253	0.860 274
ATP8B4_CXCL13_CD3G_CHRNB4	1.86E- 05	0.679 351	0.29 1241	0.719 562
TAP1_IL2RG_CXCL9_SNRPD2_PTGER2_CXCL13_GADD45G_CD27_RAB36_CD3D_CD3G_CD2	0.3999 76939	0.244 88	0.93 3241	0.061 754
IL2RG_CXCL9_TSPAN13_CXCL13_GADD45G_CD27_RAB36_CD3G_CD2_CHRNB4	2.60E- 05	0.021 7	0.14 992	0.512 723
TAP1_IL2RG_CXCL9_TSPAN13_SNRPD2_PTGER2_CD27_CD2_CHRNB4	0.9580 73145	0.006 571	0.41 8238	0.841 677
ATP8B4_TSPAN13_SNRPD2_PTGER2_GADD45G_RAB36_CD3D_CD2_CHRNB4	0.3529 87847	0.045 003	0.26 7012	0.623 472
IL2RG_CXCL9_ATP8B4_SNRPD2_CXCL13_CHRNB4	0.1052 16046	0.331 465	0.28 2525	0.803 631
TAP1_IL2RG_PTGER2_CXCL13_GADD45G_CD3D_CD2	0.5274 50468	0.089 097	0.35 2025	0.970 227
TAP1_CXCL9_TSPAN13_SNRPD2_PTGER2_GADD45G_CD27_CD3D_CD3G	0.2167 42982	0.428 301	0.36 084	0.761 263
TAP1_CXCL9_TSPAN13_CXCL13_GADD45G_RAB36_CD3D_CD3G	0.0380 65608	0.038 241	0.54 5492	0.187 045
IL2RG_ATP8B4_GADD45G_RAB36_CHRNB4	0.0025 92925	0.368 496	0.20 1154	0.570 789
IL2RG_CXCL9_TSPAN13_PTGER2_GADD45G_RAB36_CD3D_CHRNB4	0.4707 86287	0.994 895	0.30 5869	0.953 101
TAP1_CXCL9_ATP8B4_TSPAN13_PTGER2_CXCL13_GADD45G_CD2_CHRNB4	0.8423 7801	0.961 747	0.75 1239	0.790 993
CXCL9_ATP8B4_PTGER2_CXCL13_CD27_CD3G	0.9480 55375	0.615 485	0.17 8132	0.788 083
IL2RG_SNRPD2_CXCL13_RAB36_CD3G_CD2	0.7262 44566	0.556 787	0.02 5791	0.086 902
TAP1_IL2RG_ATP8B4_TSPAN13_SNRPD2_PTGER2_GADD45G_CD27_RAB36_CD3G	6.30E- 07	0.062 99	0.56 7973	0.990 607
TAP1_IL2RG_CXCL9_ATP8B4_SNRPD2_PTGER2_GADD45G_CD27_RAB36	8.31E- 05	0.004 08	0.51 7714	0.952 539
TSPAN13_SNRPD2_PTGER2_CXCL13_GADD45G	0.8773 85816	0.003 348	0.87 2582	0.827 287
TAP1_IL2RG_CXCL9_TSPAN13_SNRPD2_CXCL13_GADD45G_CD27_CD3G_CD2_CHRNB4	0.7611 15354	0.656 45	0.23 8711	0.398 874
IL2RG_CXCL13_GADD45G_RAB36_CD3G_CD2	0.0182 59526	0.006 261	0.04 6799	0.898 943

IL2RG_ATP8B4_TSPAN13_SNRPD2_PTGER2_GADD45G_RAB36_CD3D_CD3G_CD2_CHRNB4	0.2225 67957	0.177 449	0.15 0073	0.601 416
ATP8B4_SNRPD2_PTGER2_CXCL13_GADD45G_CD27_RAB36_CD3G_CHRNB4	0.1535 2258	0.934 046	0.94 7505	0.862 347
TAP1_IL2RG_CXCL9_ATP8B4_TSPAN13_SNRPD2_GADD45G_CD3G_CD2	8.55E- 06	0.014 402	0.39 4902	0.987 419
TAP1_TSPAN13_PTGER2_CD27_RAB36_CD3D	0.2254 60151	0.305 749	0.43 561	0.530 679
ATP8B4_TSPAN13_SNRPD2_PTGER2_GADD45G_RAB36_CD3D_CHRNB4	0.9262 46894	0.416 131	0.60 3761	0.064 279
TAP1_TSPAN13_GADD45G_CD27_CD3D_CD2_CHRNB4	0.6086 1687	0.990 582	0.72 9287	0.864 004
TAP1_CXCL9_ATP8B4_PTGER2	1.87E- 05	0.730 004	0.29 7288	0.603 723
TAP1_IL2RG_ATP8B4_SNRPD2_CD3D_CD3G_CHRNB4	0.1448 38108	0.426 145	0.15 7731	0.705 625
CXCL9_SNRPD2_GADD45G_RAB36	0.1646 79854	0.305 21	0.19 7457	0.840 18
TAP1_ATP8B4_CXCL13_CD27_CD3D_CD2	0.0002 19749	0.702 381	0.12 4524	0.405 469
IL2RG_CXCL9_ATP8B4_TSPAN13_PTGER2_CXCL13_RAB36_CD3G_CD2	0.2393 69143	0.964 128	0.59 8597	0.769 292
TAP1_IL2RG_SNRPD2_RAB36_CD3G_CD2	0.3259 55189	0.174 046	0.52 6001	0.472 598
TSPAN13_CXCL13_GADD45G_CD27_RAB36_CD3D_CD2_CHRNB4	0.3248 98548	0.017 317	0.24 2139	0.981 645
IL2RG_ATP8B4_TSPAN13_SNRPD2_PTGER2_CXCL13_CD27_RAB36	3.70E- 05	0.159 7	0.92 544	0.439 448
TAP1_CXCL9_ATP8B4_TSPAN13_SNRPD2_CXCL13_RAB36	1.12E- 06	0.002 286	0.70 1162	0.595 665
TAP1_IL2RG_ATP8B4_SNRPD2_CXCL13_GADD45G_CD27_CD3G_CD2_CHRNB4	0.0158 97025	0.034 734	0.74 5914	0.649 959
IL2RG_ATP8B4_SNRPD2_PTGER2_CXCL13_GADD45G_CD27	0.0020 93327	0.157 093	0.72 2063	0.012 335
TAP1_TSPAN13_SNRPD2_GADD45G_CD3D	0.0032 55768	0.006 323	0.90 8458	0.889 98
TSPAN13_SNRPD2_CD27_RAB36_CD3D_CD2_CHRNB4	0.0090 67401	0.211 973	0.39 3323	0.861 079
TAP1_ATP8B4_TSPAN13_PTGER2_CXCL13_CD27_RAB36_CD3G	0.7645 15077	0.451 352	0.39 4238	0.326 078
IL2RG_ATP8B4_TSPAN13_PTGER2_CD27_CD3G_CD2	0.3929 72434	0.196 981	0.36 213	0.401 865
TAP1_TSPAN13_CD3G_CD2	0.0019 85234	0.688 011	0.26 2732	0.739 956

TAP1_IL2RG_CXCL9_ATP8B4_SNRPD2_PTGER2_CXCL13_CD27_CD3D_CD3G_CHRNB4	0.1730 60103	0.007 888	0.57 6064	0.701 914
ATP8B4_TSPAN13_SNRPD2_PTGER2_GADD45G_RAB36_CD3D_CD2	0.0003 28892	0.498 789	0.35 7582	0.473 764
TAP1_IL2RG_PTGER2_CXCL13_CD27_RAB36_CD3G	0.0055 71739	0.032 928	0.54 1702	0.170 155
TAP1_IL2RG_ATP8B4_TSPAN13_GADD45G_CD27_CD3D_CHRNB4	0.4845 95213	0.856 688	0.41 0094	0.143 23
TAP1_TSPAN13_GADD45G_CD3D	0.0020 95693	0.115 469	0.82 106	0.816 577
IL2RG_PTGER2_CD27_CD3G	0.6155 00416	0.069 425	0.79 0264	0.017 594
CXCL9_TSPAN13_SNRPD2_PTGER2_GADD45G_RAB36_CD3G_CD2	0.6740 39491	0.895 269	0.24 4575	0.072 214
TAP1_IL2RG_ATP8B4_TSPAN13_CXCL13_CD3D_CD3G	0.4353 83199	0.259 243	0.01 2467	0.127 816
IL2RG_CXCL9_ATP8B4_SNRPD2_CD27_RAB36_CD3D_CD3G	0.6069 63638	0.767 336	0.42 1757	0.391 38
TAP1_IL2RG_TSPAN13_PTGER2_CD27_RAB36_CD3D_CD2	0.0320 88883	0.307 344	0.31 0345	0.530 679
TAP1_IL2RG_PTGER2_CXCL13_GADD45G_RAB36_CD3D_CD3G_CD2	5.08E- 05	0.010 767	0.94 6458	0.334 193
IL2RG_CXCL9_ATP8B4_TSPAN13_RAB36_CD3D_CD3G	0.0349 44967	0.994 081	0.34 4663	0.553 3
TAP1_IL2RG_CXCL9_ATP8B4_SNRPD2_PTGER2_CXCL13_CD27_RAB36_CD3G_CD2	0.0344 32757	0.749 25	0.83 9649	0.949 224
TAP1_IL2RG_CXCL9_TSPAN13_SNRPD2_PTGER2_GADD45G_CD27_CHRNB4	0.9467 71027	0.000 12	0.17 8338	0.405 091
IL2RG_TSPAN13_SNRPD2_PTGER2_GADD45G_CD27_RAB36_CD3D_CD3G_CHRNB4	0.1201 46082	0.744 106	0.71 6748	0.961 989
TAP1_IL2RG_SNRPD2_CXCL13_GADD45G_CD27_RAB36_CD3G_CD2	0.4335 56345	0.233 42	0.19 2968	0.062 286
IL2RG_ATP8B4_CD27_CD3D_CHRNB4	0.0052 75469	0.226 992	0.59 3473	0.393 056
SNRPD2_CXCL13_CHRNB4	0.0146 51696	0.012 152	0.81 2838	0.681 996
TAP1_CXCL9_PTGER2_GADD45G_CD27_RAB36_CD3D_CHRNB4	0.2479 47096	0.275 041	0.22 3454	0.502 186
TAP1_CXCL9_ATP8B4_SNRPD2_GADD45G_CD27_CD3G	0.8951 01835	0.078 534	0.14 9251	0.546 643
TAP1_CXCL9_TSPAN13_PTGER2_GADD45G_CD27_RAB36_CD3G	0.5239 25243	0.022 217	0.46 1119	0.541 382
SNRPD2_PTGER2_CD2_CHRNB4	0.6443 35292	0.585 838	0.73 0297	0.536 339

TAP1_IL2RG_CXCL9_TSPAN13_SNRPD2_GADD45G_CD2 7_RAB36_CD3D_CD3G	0.1260 18958	0.015 903	0.52 0805	0.636 354
CXCL9_SNRPD2_PTGER2_CXCL13_CD27_CD3D_CD3G	0.1176 48838	0.059 096	0.17 3758	0.077 244
TAP1_ATP8B4_TSPAN13_PTGER2_CXCL13_CD27_CD3D_ CD3G	0.0422 14687	0.558 954	0.93 5894	0.189 617
TAP1_IL2RG_CXCL9_ATP8B4_CD27_CD3D_CD2_CHRNB 4	0.0352 5349	0.572 592	0.60 3965	0.900 675
TAP1_SNRPD2_CXCL13_GADD45G_CD27_CD3D_CD3G_ CHRN4	0.0095 12684	0.031 207	0.46 913	0.544 013
TAP1_IL2RG_TSPAN13_PTGER2_GADD45G_CD27_CD2	0.0001 02718	0.166 322	0.49 7574	0.713 403
CXCL9_TSPAN13_GADD45G_CD27_RAB36_CD3D_CHRN B4	0.8522 20113	0.022 345	0.50 1647	0.741 725
IL2RG_CXCL9_TSPAN13_PTGER2_CD3G_CD2	0.9279 46159	0.046 434	0.93 3475	0.488 547
IL2RG_ATP8B4_SNRPD2_PTGER2_GADD45G_CD27_RAB 36_CD3G_CHRN4	0.0075 39355	0.263 264	0.94 5285	0.743 423
TAP1_IL2RG_CXCL9_ATP8B4_PTGER2_CD3D_CD2	0.2662 41384	0.383 561	0.08 0152	0.475 163
TAP1_CXCL9_CXCL13_GADD45G_CD27_CD3G_CHRN4	0.6257 66223	0.009 516	0.65 5272	0.133 855
TAP1_TSPAN13_SNRPD2_CXCL13_CD3D_CD3G_CD2_C HRNB4	0.0289 30947	0.002 376	0.48 927	0.985 691
TAP1_IL2RG_CXCL9_TSPAN13_SNRPD2_GADD45G_CD2 7_CD3G	0.3641 25157	0.060 91	0.66 1269	0.784 537
TAP1_IL2RG_CXCL9_TSPAN13_SNRPD2_PTGER2_GADD 45G_CD27_CD3D_CD3G_CHRN4	0.1161 25881	0.934 079	0.43 0059	0.586 321
TAP1_IL2RG_TSPAN13_PTGER2_GADD45G_CD27_CD3D _CD2_CHRN4	0.1997 4527	0.010 164	0.47 8564	0.773 001
TAP1_IL2RG_ATP8B4_TSPAN13_SNRPD2_PTGER2_CXCL 13_CD2_CHRN4	0.0779 57119	0.013 985	0.30 1119	0.638 084
TAP1_IL2RG_GADD45G_CD27_CD3D_CD3G_CD2_CHRN B4	0.8036 58294	0.055 445	0.68 3196	0.516 798
TAP1_TSPAN13_PTGER2_CXCL13_RAB36_CD2	0.1122 18264	0.602 458	0.99 8529	0.970 995
IL2RG_ATP8B4_CXCL13_CD3D_CD2	0.0002 96891	0.388 37	0.14 0877	0.176 833
TAP1_CXCL9_ATP8B4_CD3G_CD2_CHRN4	2.08E- 06	0.879 909	0.42 0265	0.548 344
TAP1_IL2RG_CXCL13_CD3D	0.2428 34152	0.299 61	0.89 3793	0.466 595
TAP1_CXCL9_SNRPD2_CXCL13_GADD45G_RAB36	0.0787 30217	0.159 774	0.75 467	0.135 24

IL2RG_TSPAN13_SNRPD2_CD3G_CHRNB4	0.0872 50245	0.152 189	0.20 1302	0.334 88
IL2RG_ATP8B4_TSPAN13_SNRPD2_CXCL13_GADD45G_RAB36_CD3D_CD3G_CD2_CHRNB4	0.0414 64277	0.128 069	0.74 986	0.342 391
TAP1_IL2RG_PTGER2_GADD45G_RAB36_CD3D_CD3G_CHRNB4	0.0185 60654	0.583 827	0.87 7576	0.362 418
IL2RG_SNRPD2_GADD45G_CD27_RAB36_CD3D	0.8752 47368	0.512 628	0.36 3931	0.610 921
IL2RG_ATP8B4_SNRPD2_CXCL13_RAB36	0.6842 45955	0.065 762	0.92 1462	0.507 466
TAP1_IL2RG_CXCL9_ATP8B4_TSPAN13_CXCL13_GADD45G_CD3G	0.2355 59187	0.018 015	0.92 7541	0.521 999
CXCL9_TSPAN13_SNRPD2_CD3D_CD3G_CD2	2.09E- 05	0.387 942	0.72 8316	0.913 33
TSPAN13_GADD45G_RAB36_CD3D_CD3G_CD2_CHRNB4	0.1244 0068	0.003 96	0.17 8522	0.288 297
ATP8B4_TSPAN13_PTGER2_CXCL13_RAB36_CD2_CHRNB4	0.0252 68489	0.598 893	0.81 0175	0.091 939
TAP1_ATP8B4_GADD45G_CD3G_CD2_CHRNB4	0.4680 28539	0.994 01	0.25 1637	0.965 746
TAP1_IL2RG_CXCL9_ATP8B4_SNRPD2_PTGER2_CXCL13_CD27_RAB36_CD3G	0.0105 6991	0.044 833	0.48 5797	0.567 469
TAP1_IL2RG_TSPAN13_SNRPD2_GADD45G_CD3G_CD2_CHRNB4	0.8981 95753	0.104 806	0.39 7729	0.831 909
TAP1_CXCL9_TSPAN13_SNRPD2_CXCL13_RAB36_CD3D_CD3G_CD2_CHRNB4	0.0065 75937	0.075 829	0.58 1691	0.833 182
TAP1_IL2RG_SNRPD2_CXCL13_GADD45G_CD27_CD3D_CHRNB4	0.8747 88667	0.561 926	0.74 793	0.545 093
TAP1_IL2RG_CXCL9_ATP8B4_GADD45G_RAB36_CD3D_CD3G_CD2	0.4425 55542	0.323 365	0.19 2813	0.858 689
IL2RG_ATP8B4_TSPAN13_PTGER2_GADD45G_RAB36_CD3D_CD3G_CD2_CHRNB4	0.3770 7448	0.756 518	0.95 4673	0.868 044
TAP1_IL2RG_CXCL9_PTGER2_CXCL13_CD27_CD3G	0.0457 15565	0.542 914	0.65 9977	0.592 187
CXCL9_CXCL13_CD27_RAB36_CD3D_CD3G	0.0300 3221	0.139 821	0.46 349	0.820 292
TAP1_IL2RG_CXCL9_TSPAN13_PTGER2_CXCL13_CD27_CD3D_CD3G_CD2	0.2448 73064	0.921 501	0.96 749	0.514 266
TSPAN13_SNRPD2_CD27_RAB36_CD3G_CD2_CHRNB4	0.8525 09673	0.000 669	0.03 3372	0.264 048
TAP1_IL2RG_CXCL9_TSPAN13_SNRPD2_PTGER2_RAB36_CD2_CHRNB4	0.2887 88028	0.003 721	0.77 2054	0.945 87
TAP1_IL2RG_CXCL9_ATP8B4_SNRPD2_PTGER2_CXCL13_GADD45G_CD2_CHRNB4	0.0133 10348	0.159 077	0.79 3337	0.204 455

TAP1_SNRPD2_PTGER2_CXCL13_GADD45G_CD27_RAB36_CD3D_CD3G_CD2	0.3288 25872	0.327 958	0.42 4345	0.725 293
CXCL9_TSPAN13_CD27_RAB36_CD3D_CHRNB4	0.5004 72263	0.000 521	0.26 436	0.158 121
TAP1_IL2RG_CXCL9_ATP8B4_TSPAN13_SNRPD2_PTGER2_GADD45G_CD27_CD3G	0.0079 0253	0.143 599	0.52 4516	0.442 163
TAP1_IL2RG_CXCL9_ATP8B4_TSPAN13_CD27_RAB36	5.55E- 06	0.026 339	0.27 062	0.916 446
CXCL9_TSPAN13_PTGER2_CXCL13_CD27_RAB36	0.0323 44503	0.037 264	0.11 2877	0.231 077
CXCL9_ATP8B4_CXCL13_CD27_RAB36_CD3D_CD2_CHRNB4	0.1500 62609	0.073 72	0.61 3456	0.134 796
TAP1_IL2RG_TSPAN13_SNRPD2_PTGER2_CXCL13_GADD45G_RAB36_CD3G_CD2	0.5653 70826	0.400 106	0.19 0426	0.987 108
TAP1_ATP8B4_TSPAN13_SNRPD2_CXCL13_GADD45G_RAB36_CD3D_CD3G	0.0393 84103	0.467 365	0.04 8224	0.642 36
IL2RG_PTGER2_GADD45G_RAB36_CD3D_CD3G_CD2_CHRNB4	0.3372 78005	0.004 583	0.01 4423	0.562 615
TSPAN13_SNRPD2_CD3G_CHRNB4	0.0001 03745	0.586 093	0.34 7583	0.692 434
CXCL9_SNRPD2_CD27	0.0004 56895	0.005 608	0.90 7276	0.791 624
TSPAN13_SNRPD2_PTGER2_RAB36_CD3D_CD3G_CHRNB4	5.49E- 05	0.688 814	0.25 4642	0.839 675
TSPAN13_SNRPD2_RAB36_CHRNB4	1.21E- 05	0.036 438	0.02 462	0.914 928
IL2RG_CXCL9_TSPAN13_PTGER2_CXCL13_GADD45G	0.7996 86861	0.000 934	0.25 2162	0.213 232
CXCL9_ATP8B4_TSPAN13_SNRPD2_CD27_RAB36_CD3D_CD2	0.0015 663	0.761 585	0.11 2821	0.800 055
CXCL9_ATP8B4_SNRPD2_CD27_CHRNB4	0.1460 67422	0.965 327	0.20 1381	0.247 555
CXCL9_TSPAN13_PTGER2_GADD45G_CD27_CD2	0.9040 21434	0.059 699	0.15 692	0.974 48
IL2RG_TSPAN13_CXCL13_GADD45G_CD27_RAB36_CD3G	0.0008 91948	0.070 345	0.08 6242	0.808 397
TAP1_SNRPD2_GADD45G_CD27_CD3D_CD2	0.0126 36014	0.014 782	0.65 4414	0.380 9
TAP1_IL2RG_CXCL9_ATP8B4_PTGER2_CXCL13_GADD45G_CD3D_CD3G_CD2_CHRNB4	0.4868 10326	0.703 371	0.14 4874	0.743 439
IL2RG_CXCL9_ATP8B4_TSPAN13_CXCL13_CD27_CD2_CHRNB4	0.1663 55162	0.792 336	0.93 0231	0.483 806
TAP1_ATP8B4_TSPAN13_SNRPD2_PTGER2_GADD45G_CD27_RAB36_CD3D	0.9407 698	0.331 225	0.36 0932	0.808 093

IL2RG_CXCL9_TSPAN13_SNRPD2_CXCL13_CD27_CD3G_CHRNB4	0.3567 79808	0.479 701	0.62 1341	0.013 979
ATP8B4_TSPAN13_GADD45G_RAB36_CD3G_CD2	0.0008 33673	0.070 06	0.60 3853	0.846 206
TAP1_CXCL9_ATP8B4_SNRPD2_PTGER2_GADD45G_CD3D_CHRNB4	0.5375 71506	0.644 087	0.28 1961	0.426 125
TAP1_IL2RG_SNRPD2_PTGER2_RAB36_CD3G_CHRNB4	0.7600 89096	0.160 34	0.20 9217	0.628 442
TAP1_SNRPD2_PTGER2_CD27_RAB36_CD3D	0.0141 14782	0.570 467	0.61 9137	0.010 353
SNRPD2_PTGER2_CXCL13_CD27_RAB36_CD3D_CD3G_CD2	0.0132 05952	0.524 187	0.63 3737	0.671 206
CXCL9_PTGER2_CXCL13_CD27_RAB36_CD3D_CD3G	0.0001 22215	0.025 48	0.60 1949	0.687 732
IL2RG_CXCL9_TSPAN13_CXCL13_CD27_RAB36_CD2_CHRNB4	1.09E- 06	0.501 538	0.47 371	0.699 018
TAP1_ATP8B4_SNRPD2_PTGER2_CXCL13_GADD45G_CD27_CD3G	0.0074 96761	0.081 324	0.65 8206	0.079 461
CXCL9_SNRPD2_PTGER2_CXCL13_CD27_CD2	2.30E- 05	0.716 558	0.26 7955	0.619 786
TAP1_TSPAN13_PTGER2_CXCL13_RAB36_CD3D_CHRNB4	0.2020 0454	0.159 444	0.92 1853	0.363 028
CXCL9_ATP8B4_PTGER2_GADD45G_CD3D_CD2_CHRNB4	0.0685 55923	0.965 376	0.37 461	0.332 355
TAP1_IL2RG_CXCL9_TSPAN13_SNRPD2_PTGER2_CXCL13_GADD45G_CD27_RAB36_CD2	0.0007 57425	0.860 511	0.05 1132	0.336 344
TSPAN13_SNRPD2_PTGER2_CXCL13_CD27_CD3D_CD3G_CHRNB4	1.86E- 05	0.126 663	0.08 5941	0.843 603
IL2RG_ATP8B4_GADD45G_RAB36_CD3D	0.3999 38187	0.033 255	0.02 9492	0.852 533
TAP1_CXCL9_ATP8B4_PTGER2_CD2	0.1196 66747	0.940 077	0.64 8349	0.125 695
IL2RG_CXCL9_TSPAN13_SNRPD2_CXCL13_GADD45G_CD3G	0.0003 57174	4.21E -05	0.18 7306	0.200 468
TAP1_IL2RG_TSPAN13_CD27_CD2	0.0316 22235	0.335 204	0.54 2103	0.867 091
SNRPD2_CD27_CHRNB4	0.0069 26912	0.091 378	0.32 9449	0.855 039
IL2RG_CXCL9_SNRPD2_CXCL13_GADD45G_RAB36_CD3D_CD3G_CHRNB4	0.0004 63427	0.003 249	0.95 1146	0.786 816
IL2RG_ATP8B4_TSPAN13_GADD45G_CD27_CD2_CHRNB4	0.0748 00808	0.125 896	0.57 8774	0.837 113
IL2RG_CXCL9_TSPAN13_PTGER2_CXCL13_CD27_CD2_CHRNB4	0.0239 88424	0.944 541	0.88 8044	0.260 663

GADD45G_CD27_CD3D_CD2	0.0224 67551	0.027 977	0.57 6168	0.473 421
IL2RG_CXCL9_ATP8B4_SNRPD2_PTGER2_CD27_CD3D_CD2_CHRNB4	0.4766 59317	0.195 995	0.66 225	0.201 524
IL2RG_CXCL9_ATP8B4_TSPAN13_PTGER2_CXCL13_GADD45G_RAB36_CD3G_CHRNB4	0.5265 26157	0.068 65	0.40 767	0.257 466
IL2RG_CXCL9_ATP8B4_TSPAN13_PTGER2_GADD45G_CD27_CHRNB4	0.0006 39845	0.148 31	0.15 359	0.924 048
TAP1_CXCL9_ATP8B4_CXCL13_RAB36_CD3D_CD3G	0.7894 94299	0.549 792	0.22 2738	0.468 561
TAP1_IL2RG_CXCL9_TSPAN13_SNRPD2_CXCL13_GADD45G_CD3D	0.5201 81694	0.183 295	0.09 5632	0.136 388
TAP1_CXCL9_ATP8B4_TSPAN13_PTGER2_CD27	0.0002 04132	0.243 858	0.42 6001	0.464 303
IL2RG_CXCL9_SNRPD2_PTGER2_CD3D_CD2_CHRNB4	0.6808 23151	0.073 529	0.76 4338	0.054 62
TAP1_RAB36_CD3D_CD2	0.0151 41795	0.026 043	0.66 0655	0.865 125
TAP1_ATP8B4_TSPAN13_PTGER2_RAB36_CD3D_CD2_CHRNB4	0.0022 58699	0.037 207	0.36 8918	0.524 036
CXCL9_SNRPD2_PTGER2_CXCL13_CD27_RAB36_CD3G_CD2_CHRNB4	0.0256 62664	0.249 007	0.12 1242	0.005 92
TAP1_IL2RG_ATP8B4_SNRPD2_PTGER2_CD27_CD3G_CHRNB4	0.0511 48402	0.475 974	0.58 8909	0.564 168
TAP1_CXCL9_TSPAN13_SNRPD2_PTGER2_GADD45G_CD27_CD3G_CHRNB4	0.6491 96349	0.821 114	0.17 4715	0.494 257
TAP1_IL2RG_CXCL9_ATP8B4_TSPAN13_SNRPD2_GADD45G_CD3D_CD2_CHRNB4	0.0284 19054	0.938 818	0.28 8477	0.871 394
IL2RG_CXCL9_PTGER2_CD27_RAB36	0.0003 57687	0.048 537	0.10 9412	0.862 797
IL2RG_ATP8B4_TSPAN13_SNRPD2_PTGER2_CXCL13_CD27_CHRNB4	0.6614 98635	0.977 812	0.65 3953	0.907 674
CXCL13_GADD45G_CD3D_CD3G	0.1109 3478	0.054 596	0.42 7418	0.921 029
IL2RG_ATP8B4_GADD45G_CD3G_CD2_CHRNB4	0.6162 75083	0.284 327	0.13 3675	0.370 854
CXCL9_ATP8B4_TSPAN13_PTGER2_CXCL13_CD27_RAB36_CD3G_CD2	0.5185 4139	0.708 227	0.76 4538	0.181 456
ATP8B4_TSPAN13_PTGER2_CD27_RAB36_CD3D_CHRNB4	0.2314 82995	0.626 286	0.53 731	0.134 481
IL2RG_TSPAN13_SNRPD2_PTGER2_GADD45G_CD27_CD3D_CD3G	0.6741 93813	0.060 461	0.46 098	0.726 02
TAP1_ATP8B4_SNRPD2_PTGER2_CD27_CD3D	0.0033 04697	0.226 444	0.12 6536	0.799 579

TAP1_IL2RG_SNRPD2_PTGER2_CXCL13_CD27_RAB36_CD3D_CD3G_CHRNB4	0.7168 84969	0.207 265	0.93 7173	0.827 707
TAP1_IL2RG_CXCL9_ATP8B4_PTGER2_CXCL13_CD27_CD3D_CD2_CHRNB4	0.0013 85733	0.308 318	0.65 4696	0.873 739
IL2RG_ATP8B4_TSPAN13_GADD45G_CD27_CD3D_CD3G_CD2	0.7834 52245	0.039 186	0.20 936	0.968 055
TAP1_CXCL9_GADD45G_RAB36_CD3D	0.0003 67699	0.000 901	0.66 7736	0.280 894
TAP1_IL2RG_CXCL9_PTGER2_RAB36_CD2	0.4853 63904	0.019 88	0.13 1723	0.431 328
TAP1_TSPAN13_PTGER2_RAB36_CD3G	5.00E-06	0.573 729	0.87 7895	0.916 272
TSPAN13_SNRPD2_CXCL13_GADD45G_CD27_CD2_CHRNB4	0.1497 47661	0.533 794	0.90 7858	0.738 079
TAP1_IL2RG_ATP8B4_TSPAN13_SNRPD2_PTGER2_CXCL13_CD27	0.6053 07537	0.628 141	0.15 1118	0.533 957
IL2RG_CXCL9_ATP8B4_SNRPD2_PTGER2	0.0351 4062	0.298 915	0.94 9816	0.619 318
TAP1_IL2RG_TSPAN13_SNRPD2_PTGER2_GADD45G_RAB36_CHRNB4	2.77E-05	0.090 18	0.72 8454	0.287 798
CXCL9_ATP8B4_TSPAN13_SNRPD2_PTGER2_CXCL13_CD27_RAB36	3.79E-06	0.002 334	0.52 1265	0.473 491
TAP1_ATP8B4_TSPAN13_SNRPD2_PTGER2_CXCL13_RAB36	0.1615 56817	0.001 908	0.69 8851	0.271 733
IL2RG_CXCL9_TSPAN13_SNRPD2_PTGER2_GADD45G_CD3D_CHRNB4	6.90E-06	0.148 559	0.10 7069	0.272 579
TAP1_CXCL9_ATP8B4_PTGER2_CXCL13_GADD45G_CD27_RAB36_CD3D_CD2	0.4419 49455	0.068 634	0.48 8329	0.542 756
IL2RG_CXCL9_TSPAN13_SNRPD2_PTGER2_CXCL13_CD27_CD2_CHRNB4	0.1249 0427	0.162 774	0.83 1496	0.007 755
TAP1_CXCL9_ATP8B4_TSPAN13_PTGER2_CXCL13_GADD45G_RAB36_CD3G	0.0299 4831	0.007 212	0.97 1683	0.489 489
IL2RG_ATP8B4_PTGER2_GADD45G_RAB36_CD3D_CD3G	0.6335 42561	0.161 811	0.99 5896	0.212 203
IL2RG_CXCL9_ATP8B4_PTGER2_GADD45G_CD27_CD3D_CD3G_CD2	0.0003 47518	0.705 913	0.79 5371	0.565 498
IL2RG_ATP8B4_SNRPD2_PTGER2_GADD45G_CD27_CD3D	0.9227 54904	0.002 256	0.34 5242	0.923 342
IL2RG_ATP8B4_TSPAN13_SNRPD2_CXCL13_GADD45G_CD27_CD2	0.7275 44058	0.027 319	0.80 8477	0.463 569
IL2RG_CXCL13_GADD45G_CD27_CD3D_CD3G_CD2	0.1724 026	0.548 07	0.20 1977	0.952 983
CXCL9_SNRPD2_CXCL13_GADD45G_CD3D_CD2	0.0042 96809	0.000 881	0.79 6815	0.708 902

TAP1_IL2RG_SNRPD2_PTGER2_CXCL13_CD27_CD3D_CD3G_CHRNB4	0.7922 73787	0.014 647	0.83 0646	0.277 737
TAP1_CXCL9_SNRPD2_PTGER2_CXCL13_CHRNB4	0.1754 65749	0.778 993	0.11 3911	0.465 581
TSPAN13_SNRPD2_GADD45G_CD3D	0.2446 31228	0.777 015	0.89 3943	0.208 931
IL2RG_ATP8B4_TSPAN13_SNRPD2_GADD45G_CD3D_CD2_CHRNB4	1.73E- 06	0.802 155	0.35 1918	0.637 969
TAP1_IL2RG_CXCL9_TSPAN13_PTGER2_CD27_RAB36_CD3D_CD3G_CHRNB4	0.1277 0708	0.874 047	0.85 1201	0.821 662
TAP1_CXCL9_ATP8B4_SNRPD2_PTGER2_GADD45G_CD27_CD3D_CD2	0.6567 23404	0.022 437	0.24 6378	0.713 285
TAP1_IL2RG_CXCL9_ATP8B4_TSPAN13_SNRPD2_PTGER2_CXCL13_GADD45G_CD27_RAB36_CD3G	0.0042 36692	0.016 158	0.81 7031	0.606 351
SNRPD2_PTGER2_CXCL13_GADD45G_RAB36_CD3D_CD3G_CHRNB4	0.0961 83718	0.001 532	0.19 5425	0.497 566
IL2RG_ATP8B4_TSPAN13_RAB36_CD2	0.3641 27854	0.890 285	0.65 3494	0.338 597
IL2RG_CXCL9_ATP8B4_SNRPD2_PTGER2_GADD45G_CD27_CD3G_CD2_CHRNB4	0.0088 31051	0.075 584	0.76 41	0.591 61
TAP1_CXCL9_SNRPD2_PTGER2_CXCL13_GADD45G_CD3D	0.1685 53361	0.732 842	0.37 2918	0.867 824
TAP1_ATP8B4_TSPAN13_SNRPD2_PTGER2_GADD45G_CD27_RAB36_CD3D_CD3G_CHRNB4	0.0028 77991	0.372 377	0.71 35	0.417 511
ATP8B4_SNRPD2_PTGER2_GADD45G_CD27_CD2_CHRNB4	0.4622 44951	0.008 523	0.62 5316	0.310 39
ATP8B4_TSPAN13_SNRPD2_CXCL13_GADD45G_CD27_CD2_CHRNB4	1.96E- 05	0.913 123	0.80 7416	0.432 601
ATP8B4_PTGER2_CXCL13_RAB36_CD3G_CD2_CHRNB4	0.0010 03567	0.052 857	0.29 8783	0.395 396
TAP1_IL2RG_TSPAN13_SNRPD2_CXCL13_GADD45G_CD3D_CD2_CHRNB4	0.3151 32864	0.149 061	0.11 5148	0.997 9
IL2RG_SNRPD2_PTGER2_CXCL13_CD27_CD3D_CD3G	0.4703 56554	0.088 641	0.73 32	0.205 616
TAP1_IL2RG_CXCL9_ATP8B4_TSPAN13_GADD45G_CD27_RAB36_CD3G_CHRNB4	5.63E- 08	0.218 986	0.57 0495	0.292 759
IL2RG_PTGER2_RAB36_CD3D_CD3G	0.0002 21029	0.102 394	0.01 2835	0.391 669
TAP1_IL2RG_TSPAN13_CD3D	0.0216 53341	0.302 775	0.20 9406	0.367 754
TAP1_IL2RG_CXCL9_ATP8B4_TSPAN13_PTGER2_GADD45G_CD27_CD2	4.42E- 06	0.728 636	0.32 6898	0.278 177
TAP1_ATP8B4_CD3D_CD3G_CD2	0.0712 38814	0.393 699	0.46 5993	0.884 36

SNRPD2_GADD45G_CD3D_CD3G_CD2	0.9390 62396	0.157 582	0.89 3967	0.735 851
IL2RG_CXCL9_ATP8B4_PTGER2_GADD45G_CD27_CD3G_CD2	0.8879 47102	0.184 636	0.70 3667	0.785 16
CXCL9_TSPAN13_SNRPD2_PTGER2_CXCL13_GADD45G_RAB36_CD2	0.7426 01588	0.172 408	0.27 6765	0.674 551
TSPAN13_PTGER2_GADD45G_CD2	0.7331 63651	0.706 424	0.51 7517	0.506 412
TAP1_IL2RG_CXCL9_ATP8B4_SNRPD2_CXCL13_GADD45G_RAB36_CD3D_CD2_CHRNB4	0.0818 05095	0.229 181	0.53 2156	0.064 538
IL2RG_CXCL9_TSPAN13_SNRPD2_PTGER2_GADD45G_CD27_RAB36_CD3D_CHRNB4	0.7552 65534	0.514 832	0.31 0912	0.577 478
TAP1_IL2RG_TSPAN13_SNRPD2_CXCL13_CD27_CD3D_CHRNB4	0.1088 21923	0.177 718	0.82 832	0.247 255
CXCL9_ATP8B4_SNRPD2_PTGER2_CXCL13_CD27_RAB36_CD3D	0.0009 67027	0.895 253	0.16 0357	0.980 169
IL2RG_ATP8B4_SNRPD2_PTGER2_CD27_RAB36_CD3G_CD2	0.0001 80239	0.018 372	0.98 1921	0.103 295
CXCL9_ATP8B4_SNRPD2_CXCL13_GADD45G_CD3D_CD3G_CD2_CHRNB4	0.0066 9812	0.446 942	0.30 549	0.508 626
TAP1_CXCL9_ATP8B4_TSPAN13_CXCL13_GADD45G_CD3D_CD3G_CHRNB4	0.0008 49318	0.900 61	0.58 5563	0.645 074
IL2RG_CXCL9_SNRPD2_CXCL13_CD3G_CD2_CHRNB4	5.03E-05	0.034 109	0.60 9078	0.812 645
TAP1_IL2RG_CHRNB4	0.0972 08538	0.333 965	0.33 4454	0.289 939
CXCL9_ATP8B4_RAB36_CD3D_CD3G_CD2	0.9152 15352	0.469 563	0.85 9052	0.883 05
IL2RG_CXCL9_ATP8B4_CD27_CD3D_CD2_CHRNB4	0.0617 5577	0.391 619	0.14 2628	0.416 736
TAP1_IL2RG_CXCL9_TSPAN13_SNRPD2_PTGER2_CD3D_CD3G_CD2	0.5342 42531	0.007 906	0.79 7516	0.907 37
IL2RG_ATP8B4_TSPAN13_CXCL13_GADD45G_CD3G_CD2_CHRNB4	0.4215 74813	0.971 695	0.97 4023	0.548 617
IL2RG_CXCL9_ATP8B4_TSPAN13_PTGER2_CXCL13_GADD45G_CD27_CD3D_CD3G_CD2	0.1105 16639	0.172 274	0.24 0008	0.764 416
IL2RG_CXCL9_ATP8B4_TSPAN13_SNRPD2_PTGER2_CXCL13_GADD45G_RAB36_CD3G_CD2_CHRNB4	0.0860 56959	0.090 143	0.96 3154	0.777 33
CXCL9_CD27_CHRNB4	0.0039 12352	0.744 873	0.28 0384	0.480 735
IL2RG_CXCL9_TSPAN13_PTGER2_GADD45G_CD27_RAB36_CD3D_CD3G	0.0049 16178	0.017 251	0.96 932	0.909 866
IL2RG_CXCL9_TSPAN13_SNRPD2_GADD45G_CD27_CD3D_CD2	0.7473 28079	0.180 694	0.06 5616	0.791 661

TAP1_TSPAN13_SNRPD2_CXCL13_RAB36_CD3D_CD2_C HRNB4	0.0034 33804	0.250 759	0.87 6643	0.856 286
TAP1_CXCL9_ATP8B4_SNRPD2_CXCL13_CD27_CD3D_C D3G_CD2_CHRNB4	0.0631 79657	0.051 725	0.95 1208	0.540 818
TAP1_PTGER2_CXCL13_CD3D_CD3G_CHRNB4	0.0027 44185	0.723 708	0.85 359	0.838 078
TAP1_CXCL9_GADD45G_RAB36_CD2	0.0001 14383	0.005 17	0.09 9362	0.280 894
CXCL9_TSPAN13_PTGER2_CHRNB4	0.0001 87104	0.002 357	0.77 3681	0.971 849
TAP1_IL2RG_CXCL9_ATP8B4_PTGER2_CXCL13_GADD45 G_RAB36	0.0005 68871	0.017 578	0.12 7278	0.401 36
CXCL9_ATP8B4_SNRPD2_CXCL13_CD3G	0.3194 90192	0.004 102	0.06 6129	0.087 864
CXCL9_TSPAN13_SNRPD2_PTGER2_CXCL13_GADD45G_ RAB36_CD3D_CD2	0.5255 91919	0.192 141	0.09 1161	0.445 076
IL2RG_CXCL9_ATP8B4_SNRPD2_PTGER2_GADD45G_CD 27_RAB36_CD3D	0.0773 62704	0.907 979	0.33 2523	0.426 057
IL2RG_CXCL9_ATP8B4_SNRPD2_PTGER2_CXCL13_CD27 _CD2	0.1963 86223	0.430 917	0.15 1299	0.123 088
PTGER2_CXCL13_GADD45G_CD27_CD3G_CHRNB4	0.0007 96424	0.828 7	0.45 5079	0.939 967
IL2RG_ATP8B4_TSPAN13_SNRPD2_CXCL13_RAB36_CD3 D_CD2	0.3559 18754	0.323 64	0.29 7187	0.864 564
TAP1_ATP8B4_SNRPD2_PTGER2_CXCL13_GADD45G_CD 27_RAB36_CD3D_CD3G	0.4833 19593	0.697 23	0.69 7149	0.017 337
TAP1_ATP8B4_TSPAN13_CXCL13_GADD45G_CD3D_CD 2_CHRNB4	0.3176 55491	0.003 216	0.85 94	0.951 145
IL2RG_CXCL9_ATP8B4_TSPAN13_PTGER2_CD27_CD3D	0.0001 03197	0.523 376	0.58 2254	0.175 27
CXCL9_ATP8B4_TSPAN13_PTGER2_CXCL13_GADD45G_ CD2_CHRNB4	0.1394 7211	0.540 034	0.23 0435	0.425 397
IL2RG_CXCL9_SNRPD2_CXCL13_CD27_RAB36_CD3D_C D2_CHRNB4	0.0224 69812	0.087 46	0.14 1636	0.766 869
TAP1_IL2RG_CXCL9_PTGER2_CD27_CD3D	0.1791 35586	0.872 657	0.47 1228	0.640 167
IL2RG_CXCL9_TSPAN13_SNRPD2_PTGER2_CXCL13_CD2 7_CD3D_CD3G	0.0457 79109	0.799 462	0.30 123	0.016 48
CXCL9_TSPAN13_CXCL13_GADD45G_RAB36_CD3G_CH RNB4	0.0496 17273	0.053 186	0.95 5875	0.232 933
ATP8B4_PTGER2_CXCL13_GADD45G_CD3G_CD2_CHRN B4	0.0076 08516	0.275 675	0.57 1442	0.474 411
TAP1_ATP8B4_SNRPD2_CXCL13_GADD45G_CD27_CD3 D_CD3G_CD2_CHRNB4	3.31E- 05	0.094 381	0.62 9345	0.506 671

GADD45G_CD27_RAB36	0.0175 36679	0.054 506	0.26 4307	0.621 872
TAP1_CXCL9_ATP8B4_TSPAN13_CXCL13_GADD45G_CD3G_CHRNB4	0.7197 57176	0.318 973	0.56 7337	0.749 404
IL2RG_TSPAN13_SNRPD2_CD3D_CD2_CHRNB4	0.4423 16614	0.805 135	0.70 3711	0.601 341
TAP1_CXCL9_ATP8B4_PTGER2_CXCL13_CD27_CD3D	0.6541 93445	0.835 647	0.11 2195	0.059 411
IL2RG_ATP8B4_TSPAN13_SNRPD2_CHRNB4	0.7930 27274	0.491 209	0.39 3161	0.418 791
IL2RG_CXCL9_ATP8B4_PTGER2_CXCL13_GADD45G_CD27_RAB36_CD2_CHRNB4	0.4462 61867	0.196 353	0.10 1533	0.086 281
IL2RG_ATP8B4_SNRPD2_GADD45G_RAB36_CD3D_CD3G_CD2_CHRNB4	0.0006 20773	0.758 089	0.61 5015	0.954 512
TAP1_IL2RG_CXCL9_ATP8B4_TSPAN13_CXCL13_CD27_CD3D_CD3G_CD2	0.1928 80469	0.346 305	0.44 8923	0.372 044
TAP1_IL2RG_CXCL9_TSPAN13_SNRPD2_PTGER2_CXCL13_GADD45G_CD3D_CD2_CHRNB4	0.5072 18402	0.015 541	0.63 1742	0.995 657
TAP1_CXCL9_ATP8B4_TSPAN13_GADD45G_RAB36_CD3D_CD3G_CD2	1.67E-08	0.334 838	0.30 4217	0.870 733
TAP1_IL2RG_CXCL9_TSPAN13_SNRPD2_PTGER2_CXCL13_CD27_RAB36_CD3G_CD2	0.0015 55198	0.208 828	0.17 3494	0.537 091
TAP1_IL2RG_CXCL9_ATP8B4_TSPAN13_SNRPD2_PTGER2_CXCL13_GADD45G_RAB36_CHRNB4	0.1735 30909	0.017 254	0.17 3985	0.346 868
TAP1_IL2RG_CXCL9_ATP8B4_TSPAN13_CXCL13_GADD45G_CD3G_CD2	0.0061 12606	0.093 335	0.94 8227	0.502 568
IL2RG_CXCL9_ATP8B4_CD27_CD3D_CHRNB4	0.0024 17153	0.287 041	0.13 7348	0.457 662
TAP1_CXCL9_TSPAN13_SNRPD2_PTGER2_GADD45G_RAB36_CD3G_CHRNB4	0.1120 89701	0.494 345	0.38 3668	0.256 13
TAP1_IL2RG_ATP8B4_TSPAN13_SNRPD2_PTGER2_CXCL13_GADD45G_RAB36_CD3D_CD2	0.4626 58421	0.266 985	0.00 3701	0.927 171
TAP1_IL2RG_CXCL9_ATP8B4_SNRPD2_CXCL13_GADD45G_CD2	9.91E-05	0.003 281	0.20 473	0.987 942
IL2RG_CXCL9_TSPAN13_PTGER2_CD27_CD3D_CD3G_CHRNB4	0.9839 36287	0.033 968	0.98 0606	0.747 367
TAP1_CXCL9_CXCL13_GADD45G_CD3G_CD2_CHRNB4	0.4177 88836	0.008 371	0.57 4066	0.261 241
CXCL9_ATP8B4_SNRPD2_CXCL13_GADD45G_RAB36_CD3G	0.7591 29781	0.832 8	0.49 3903	0.925 752
ATP8B4_CD27_RAB36_CD3D_CD3G_CD2_CHRNB4	2.00E-06	0.213 134	0.18 008	0.520 758
TAP1_SNRPD2_PTGER2_CXCL13_CD2	0.3412 65665	0.001 846	0.86 0631	0.674 373

TAP1_CXCL9_ATP8B4_TSPAN13_SNRPD2_RAB36_CD3D_CD3G_CD2	7.68E-09	0.014259	0.656799	0.547526
TAP1_IL2RG_CXCL9_SNRPD2_PTGER2_CXCL13_CD27_CD3G_CD2_CHRNB4	0.099806605	0.241147	0.276266	0.344936
ATP8B4_SNRPD2_PTGER2_CXCL13_CD3G_CHRNB4	0.024078475	0.004531	0.424682	0.437715
CXCL9_ATP8B4_TSPAN13_CD3D_CD3G_CHRNB4	7.20E-06	0.015111	0.754529	0.998713
TAP1_IL2RG_SNRPD2_PTGER2_RAB36_CD3D_CD3G_CHRNB4	0.197757091	0.195073	0.70401	0.827707
TAP1_CXCL9_ATP8B4_TSPAN13_SNRPD2_PTGER2_CXCL13_GADD45G_RAB36	0.325645422	0.011518	0.723584	0.396145
TAP1_CXCL9_ATP8B4_TSPAN13_CD3D_CD3G_CD2	7.21E-07	0.759185	0.358661	0.339253
TAP1_IL2RG_TSPAN13_SNRPD2_PTGER2_CD3D_CD3G_CD2	0.000386757	0.044049	0.961241	0.924114
IL2RG_TSPAN13_SNRPD2_PTGER2_CXCL13_CD27_CD3D_CD2	0.027044923	0.846126	0.639091	0.805933
CXCL9_TSPAN13_SNRPD2_CD2_CHRNB4	0.173935608	0.070546	0.639333	0.807755
CXCL13_RAB36_CHRNB4	0.148450763	0.083089	0.606603	0.617191
TAP1_CXCL9_ATP8B4_TSPAN13_SNRPD2_PTGER2_GADD45G_CD3D_CD2_CHRNB4	7.83E-06	0.882285	0.871755	0.266978
TAP1_IL2RG_TSPAN13_SNRPD2_CXCL13_GADD45G_CD3D_CD3G_CD2	0.625780056	0.013504	0.318699	0.718898
CXCL9_TSPAN13_SNRPD2_GADD45G_CD27_RAB36_CD2_CHRNB4	0.080695204	0.93215	0.223101	0.24103
TAP1_IL2RG_ATP8B4_PTGER2_GADD45G_RAB36_CD2_CHRNB4	0.186885245	0.861371	0.991041	0.982187
CXCL9_PTGER2_CD27_CD3D_CD3G_CD2_CHRNB4	0.011035063	0.750594	0.08489	0.24247
TAP1_IL2RG_TSPAN13_SNRPD2_RAB36_CD2	0.339962547	0.024149	0.001904	0.883579
ATP8B4_GADD45G_CD3D_CD2	0.025202776	0.93481	0.295792	0.100798
TAP1_CXCL9_SNRPD2_PTGER2_RAB36_CD3D_CD2	0.164291711	0.120298	0.844504	0.907908
SNRPD2_PTGER2_GADD45G_CD2_CHRNB4	0.499548265	0.308719	0.13192	0.916978
CXCL9_TSPAN13_CD3D_CD3G_CD2_CHRNB4	0.049044108	0.306431	0.105919	0.736238
IL2RG_CXCL9_ATP8B4_PTGER2_CXCL13_CD27_CD3D_CD3G	0.532122175	0.469003	0.894215	0.654165

IL2RG_TSPAN13_SNRPD2_CXCL13_CD3D	0.0005 19518	0.033 041	0.65 8065	0.679 667
TAP1_CXCL9_SNRPD2_PTGER2_CXCL13_CD27_CD3D_CD2	0.0006 72384	0.457 45	0.50 9307	0.734 967
CXCL9_SNRPD2_CD27_RAB36_CD2	0.9930 22474	0.844 065	0.20 6412	0.052 328
TAP1_TSPAN13_PTGER2_CD27_CD3G_CHRNB4	0.0502 62809	0.101 525	0.54 0969	0.894 734
TAP1_CXCL9_SNRPD2_PTGER2_RAB36_CD3D_CHRNB4	0.6451 46005	0.013 925	0.66 4009	0.877 854
TAP1_CXCL9_ATP8B4_SNRPD2_RAB36_CD2_CHRNB4	0.1708 01438	0.737 097	0.37 5594	0.637 826
TAP1_CXCL9_PTGER2_CD27_RAB36_CD3D_CD3G	0.7104 06083	0.393 685	0.66 2087	0.664 198
TAP1_IL2RG_TSPAN13_SNRPD2_PTGER2_GADD45G_RAB36_CD3D_CD3G_CD2_CHRNB4	0.5329 85313	0.163 657	0.79 3454	0.754 062
TAP1_IL2RG_TSPAN13_SNRPD2_CXCL13_CD27_RAB36_CD3D_CD3G_CD2_CHRNB4	0.0023 85222	0.229 61	0.76 1716	0.324 708
TAP1_CXCL9_SNRPD2_PTGER2_CXCL13_RAB36_CD3D_CD3G_CD2	0.9866 19629	0.043 238	0.69 7601	0.967 073
IL2RG_ATP8B4_SNRPD2_CXCL13_CD3G_CD2_CHRNB4	0.0361 27813	0.053 958	0.54 7434	0.992 983
IL2RG_ATP8B4_TSPAN13_PTGER2_GADD45G_CD27_CD3D_CD2	0.5855 17944	0.285 222	0.05 6769	0.790 173
TAP1_CXCL9_ATP8B4_SNRPD2_PTGER2_GADD45G_CD27_RAB36_CD3D_CD3G_CD2_CHRNB4	0.6420 83868	0.038 982	0.77 4578	0.345 721
TAP1_CXCL9_ATP8B4_SNRPD2_PTGER2_GADD45G_CD27_RAB36_CD3D	0.1991 07076	0.938 221	0.12 2021	0.369 84
IL2RG_TSPAN13_SNRPD2_PTGER2_GADD45G_CD27_RAB36_CD3D_CD3G_CD2_CHRNB4	0.4110 52272	0.442 311	0.94 8316	0.494 172
TAP1_ATP8B4_CXCL13_GADD45G_RAB36_CD3D_CD3G	5.60E-06	0.056 638	0.01 1532	0.802 77
TSPAN13_CXCL13_CD27_RAB36_CD3D_CD3G_CD2	1.69E-05	0.146 782	0.57 3853	0.874 236
TAP1_TSPAN13_CD3D	0.0165 66549	0.920 826	0.73 4547	0.613 063
TAP1_IL2RG_ATP8B4_TSPAN13_SNRPD2_GADD45G_CD3G_CHRNB4	0.0041 35686	0.209 496	0.04 3269	0.675 35
IL2RG_ATP8B4_PTGER2_GADD45G_CD2	0.7409 36304	0.255 904	0.41 1427	0.357 457
IL2RG_CXCL9_SNRPD2_PTGER2_GADD45G_CD2_CHRNB4	0.9526 44591	0.000 269	0.92 8059	0.560 991
ATP8B4_SNRPD2_PTGER2_GADD45G_CD3G_CD2_CHRNB4	0.6950 38739	0.110 067	0.83 6083	0.443 457

CXCL9_GADD45G_CD27_CHRNB4	0.2802 66175	0.188 94	0.50 2566	0.345 872
SNRPD2_PTGER2_GADD45G_RAB36_CD3D	0.0065 06452	0.402 471	0.73 9709	0.501 496
TAP1_ATP8B4_PTGER2_CD3D_CD2_CHRNB4	0.0049 19406	0.198 265	0.56 6085	0.214 475
TAP1_IL2RG_CXCL9_ATP8B4_TSPAN13_CXCL13_RAB36_CD3D_CD3G	0.0009 59775	0.137 646	0.91 2791	0.602 586
TAP1_IL2RG_CXCL9_ATP8B4_SNRPD2_PTGER2_CXCL13_GADD45G_RAB36_CD3G	0.0003 92416	0.005 369	0.78 088	0.705 582
TAP1_CXCL9_ATP8B4_PTGER2_CXCL13_CD27_RAB36_CD3G	0.0708 57052	0.150 621	0.88 7875	0.878 319
TAP1_IL2RG_CXCL9_ATP8B4_CXCL13_GADD45G_RAB36_CD3D_CD3G	0.1244 02565	0.020 801	0.85 9611	0.571 263
TAP1_ATP8B4_PTGER2_CD27_CD3D	0.3287 47729	0.819 304	0.24 068	0.723 005
TAP1_IL2RG_CXCL9_SNRPD2_PTGER2_CD3D_CD2_CHRNB4	0.1610 81667	0.339 034	0.43 3382	0.648 716
TAP1_CXCL9_TSPAN13_PTGER2_CXCL13_GADD45G_CHRNB4	0.0037 37229	0.743 05	0.32 4575	0.671 846
IL2RG_ATP8B4_TSPAN13_CD27_CD3D_CD2	5.49E- 05	0.129 928	0.04 4947	0.498 824
TAP1_CXCL9_ATP8B4_TSPAN13_PTGER2_GADD45G_CD27_RAB36_CD2_CHRNB4	0.1635 64728	0.337 41	0.76 1819	0.794 019
CXCL9_PTGER2_CXCL13_CD27_CD2	0.9495 20421	0.202 798	0.24 861	0.019 262
ATP8B4_TSPAN13_PTGER2_CD27_RAB36_CD3G	0.9982 18501	0.829 955	0.63 2633	0.374 514
CXCL9_TSPAN13_SNRPD2_RAB36_CD3G_CD2	0.9002 40007	0.294 849	0.72 2581	0.126 413
CXCL9_SNRPD2_CXCL13_GADD45G_CD3D	0.6397 54604	0.490 209	0.14 7832	0.072 688
TSPAN13_PTGER2_CD27_CD3D_CD3G_CHRNB4	0.0001 27417	0.048 636	0.46 3813	0.415 672
TAP1_IL2RG_CXCL9_ATP8B4_TSPAN13_SNRPD2_PTGER2_CD3G_CD2_CHRNB4	0.7668 61986	0.311 17	0.21 3482	0.987 489
TAP1_ATP8B4_TSPAN13_GADD45G_CD27_CD2_CHRNB4	0.1758 99489	0.011 173	0.56 4637	0.957 753
IL2RG_ATP8B4_TSPAN13_SNRPD2_PTGER2_GADD45G_CD27_RAB36_CD3D_CD3G_CHRNB4	0.0004 62404	0.456 581	0.75 6361	0.725 51
CXCL9_CXCL13_CD27_RAB36_CD3G_CD2	0.0270 22862	0.015 526	0.36 6124	0.892 162
TAP1_ATP8B4_TSPAN13_SNRPD2_CXCL13_CD3G_CD2	0.5815 99834	0.002 291	0.59 8319	0.652 696

TAP1_IL2RG_ATP8B4_TSPAN13_CD3G	0.0019 72056	0.250 516	0.07 0684	0.614 972
TAP1_CXCL9_SNRPD2_PTGER2_GADD45G_CHRNB4	0.0003 73344	0.069 014	0.11 9352	0.333 834
CXCL9_SNRPD2_GADD45G_CD27	0.5388 17013	0.971 58	0.28 997	0.689 058
ATP8B4_TSPAN13_SNRPD2_PTGER2_CXCL13_GADD45G_CD27_RAB36_CD3D_CD3G_CHRNB4	0.5824 24982	0.076 369	0.54 5825	0.477 145
SNRPD2_CD3D_CD2	0.0958 18152	0.007 938	0.20 8436	0.333 313
ATP8B4_GADD45G_CD27	0.9334 40308	0.101 782	0.21 4823	0.480 92
CXCL13_RAB36_CD3D_CD2	0.0439 49903	0.258 731	0.90 5224	0.441 313
TAP1_IL2RG_SNRPD2_CD3G_CD2	0.0343 52091	0.085 522	0.36 1653	0.665 489
IL2RG_ATP8B4_TSPAN13_SNRPD2_PTGER2_CD2_CHRNB4	0.0041 0556	0.035 669	0.38 0076	0.932 21
IL2RG_CXCL9_ATP8B4_TSPAN13_SNRPD2_PTGER2_GADD45G_CD27_RAB36_CD3D_CD2_CHRNB4	0.9537 89236	0.832 042	0.28 925	0.986 379
IL2RG_CXCL9_SNRPD2_PTGER2_CXCL13_CD27_CD3D_CD2_CHRNB4	0.0783 09706	0.174 163	0.80 8575	0.790 305
TAP1_IL2RG_CXCL9_TSPAN13_CXCL13_GADD45G_RAB36_CD3D	7.07E-05	0.025 545	0.17 0597	0.512 981
TAP1_IL2RG_CXCL9_ATP8B4_PTGER2_CXCL13_CD27_CD3D_CD3G_CHRNB4	0.0039 7586	0.216 734	0.58 0753	0.706 243
CXCL9_ATP8B4_GADD45G_CD27_RAB36_CD3D_CD2	4.21E-05	0.046 729	0.01 2289	0.391 547
TAP1_CXCL9_ATP8B4_TSPAN13_CD27_RAB36_CD3D_CD2	0.2783 74912	0.257 4	0.12 5271	0.653 68
TSPAN13_PTGER2_CD27_CD3D_CHRNB4	0.0003 94508	0.035 062	0.14 233	0.916 09
TAP1_CXCL9_ATP8B4_TSPAN13_GADD45G_RAB36	0.4054 55373	0.002 635	0.44 6671	0.731 268
TAP1_IL2RG_CXCL9_TSPAN13_SNRPD2_PTGER2_CXCL13_CD27_RAB36_CD3D_CD3G_CD2_CHRNB4	0.7699 73564	0.489 474	0.50 0247	0.556
PTGER2_GADD45G_CD27_RAB36_CD3G_CHRNB4	0.0022 73672	0.055 348	0.27 7544	0.480 034
IL2RG_ATP8B4_SNRPD2_PTGER2_CXCL13_GADD45G_RAB36_CD3G_CD2_CHRNB4	0.0057 77335	0.180 527	0.68 4039	0.536 466
TAP1_CXCL9_TSPAN13_SNRPD2_GADD45G_CD27_RAB36_CD3G_CD2_CHRNB4	0.9990 12137	0.473 559	0.54 9533	0.408 351
TAP1_IL2RG_CXCL13_GADD45G_CD27_RAB36_CD3G_CD2	0.0331 82631	0.026 353	0.15 5884	0.298 055

TAP1_IL2RG_PTGER2_CXCL13_GADD45G_CD27_RAB36_CD3D_CD3G_CHRNB4	0.0004 53929	0.057 573	0.11 6596	0.781 768
TAP1_IL2RG_CXCL9_ATP8B4_PTGER2_CXCL13_GADD45G_RAB36_CD3D_CD3G_CD2_CHRNB4	0.0342 0861	0.089 374	0.25 8875	0.897 81
TAP1_ATP8B4_TSPAN13_SNRPD2_PTGER2_GADD45G_CD3D_CD3G_CHRNB4	0.0001 24878	0.476 469	0.56 7425	0.247 307
IL2RG_ATP8B4_TSPAN13_SNRPD2_GADD45G_CD3D_CD3G_CD2_CHRNB4	0.7647 34757	0.236 159	0.37 7347	0.439 604
TAP1_CXCL9_SNRPD2_PTGER2_RAB36_CD3D_CD2_CHRNB4	0.0024 8587	0.923 098	0.15 0104	0.793 977
TAP1_CXCL9_ATP8B4_TSPAN13_SNRPD2_PTGER2_CXCL13_CD27_CD3D_CD2	0.0010 94623	0.021 467	0.26 9964	0.320 433
TAP1_ATP8B4_TSPAN13_CD27_CD3D_CD2	0.0002 58395	0.878 258	0.19 5936	0.094 905
IL2RG_ATP8B4_TSPAN13_CD3D_CD3G_CD2_CHRNB4	0.1089 56234	0.122 551	0.89 4049	0.465 551
ATP8B4_TSPAN13_PTGER2_RAB36_CD3D_CD2	0.0098 89985	0.252 215	0.30 5494	0.973 963
IL2RG_CXCL9_TSPAN13_PTGER2_RAB36_CD3D	0.9702 2353	0.018 881	0.99 7471	0.863 208
CXCL9_ATP8B4_TSPAN13_SNRPD2_PTGER2_CD3D	0.8640 39739	0.733 928	0.18 2413	0.827 047
TAP1_PTGER2_CXCL13_GADD45G_CD27_RAB36_CHRNB4	0.0328 94892	0.037 573	0.26 8971	0.837 704
SNRPD2_PTGER2_GADD45G_CD27_CHRNB4	0.1506 39719	0.430 766	0.60 768	0.902 593
IL2RG_ATP8B4_TSPAN13_CD27_CD3D_CHRNB4	0.0055 86451	0.771 673	0.95 6161	0.057 354
TAP1_IL2RG_ATP8B4_TSPAN13_GADD45G_RAB36_CD2	0.3288 62944	0.252 127	0.43 6326	0.894 643
TAP1_IL2RG_ATP8B4_CXCL13_GADD45G_CD3D_CD2_CHRNB4	0.0533 23038	0.182 808	0.21 8236	0.744 907
IL2RG_SNRPD2_CXCL13_GADD45G_RAB36_CHRNB4	0.2403 88618	0.677 914	0.56 7444	0.100 693
ATP8B4_SNRPD2_GADD45G_CD3G_CD2_CHRNB4	0.0358 05523	0.639 106	0.14 7679	0.677 075
TAP1_ATP8B4_TSPAN13_PTGER2_GADD45G_RAB36_CD3D_CD3G_CD2_CHRNB4	0.5007 54921	0.930 746	0.27 0271	0.700 832
IL2RG_CXCL9_TSPAN13_SNRPD2_GADD45G_CD3G_CD2_CHRNB4	0.9745 93533	0.086 488	0.66 5508	0.771 406
TAP1_CXCL9_SNRPD2_CD27_CD3D_CD3G_CD2_CHRNB4	0.0098 62845	0.002 335	0.49 5044	0.537 262
CXCL9_ATP8B4_SNRPD2_CXCL13_GADD45G_CD3G	0.0923 80461	0.685 307	0.94 0054	0.056 326

ATP8B4_TSPAN13_PTGER2_CXCL13_CD27_CD2	0.0041 54291	0.570 92	0.01 7567	0.972 695
TAP1_CXCL9_ATP8B4_TSPAN13_CD27_CD3D_CD3G_CD2_CHRNB4	0.0066 10138	0.083 066	0.85 0588	0.909 259
TAP1_CXCL9_SNRPD2_PTGER2_CXCL13_RAB36_CD3D_CHRNB4	0.0058 27133	0.077 074	0.81 2513	0.839 844
TAP1_ATP8B4_TSPAN13_PTGER2_CD3G_CD2_CHRNB4	0.5780 85882	0.101 326	0.52 0558	0.710 069
IL2RG_TSPAN13_CXCL13_GADD45G_CD27_CD3G_CHRNB4	0.0435 2736	0.909 182	0.21 9571	0.194 48
IL2RG_CXCL9_CXCL13_GADD45G_CD27_RAB36_CD2_CHRNB4	0.0622 35018	0.028 378	0.16 3155	0.480 625
CXCL13_GADD45G_CD27_CD3D_CD2	0.1924 91222	0.422 817	0.21 405	0.794 691
IL2RG_ATP8B4_TSPAN13_SNRPD2_PTGER2_GADD45G_CD27_RAB36_CD2	0.3840 96866	0.966 555	0.88 7028	0.497 848
TAP1_ATP8B4_SNRPD2_CXCL13_CD3D_CD3G_CHRNB4	0.0035 38445	0.030 493	0.76 1836	0.456 187
IL2RG_CXCL9_SNRPD2_GADD45G_CD27_RAB36	0.4898 04497	0.333 471	0.08 285	0.788 276
IL2RG_CXCL9_SNRPD2_PTGER2_CD27_CD3G_CHRNB4	0.1714 05291	0.540 233	0.22 2983	0.677 138
TAP1_CXCL9_ATP8B4_TSPAN13_PTGER2_RAB36_CD3D_CD3G	0.5958 6262	0.061 022	0.09 8982	0.355 533
TAP1_IL2RG_CXCL9_ATP8B4_TSPAN13_PTGER2_CXCL13_GADD45G_CD2	3.68E- 05	0.998 086	0.13 6047	0.818 211
IL2RG_CXCL9_ATP8B4_TSPAN13_PTGER2_CD27_CD3G_CD2_CHRNB4	0.0001 85835	0.074 788	0.89 0574	0.164 408
TAP1_TSPAN13_SNRPD2_GADD45G_CD3G	0.0017 41444	0.058 293	0.69 0312	0.417 454
TAP1_PTGER2_GADD45G_RAB36_CD3G	0.8561 37986	0.020 771	0.53 1547	0.109 715
TAP1_IL2RG_CXCL9_ATP8B4_SNRPD2_PTGER2_CXCL13_RAB36_CD3D_CD3G_CD2	0.9997 62775	0.492 357	0.71 7843	0.507 616
TAP1_CXCL9_ATP8B4_GADD45G_CD27_CD3D_CD3G	0.0493 60096	0.006 867	0.21 0381	0.249 234
IL2RG_ATP8B4_TSPAN13_CD27_CD3D_CD2_CHRNB4	9.05E- 07	0.055 96	0.16 4053	0.576 01
TAP1_ATP8B4_TSPAN13_CXCL13_CD27_RAB36_CD3D_CD3G	0.0001 29302	0.361 967	0.30 7746	0.609 502
IL2RG_SNRPD2_RAB36_CD3D_CD3G_CD2_CHRNB4	0.4775 40343	0.054 195	0.49 9977	0.710 824
TAP1_SNRPD2_PTGER2_CXCL13_RAB36_CD3D_CD2_CHRNB4	0.3276 0018	0.420 536	0.32 2649	0.730 18

TAP1_IL2RG_CXCL9_TSPAN13_SNRPD2_GADD45G_CD2 7_CD3D_CD2	0.0002 05277	0.078 489	0.21 2224	0.626 2
CXCL9_ATP8B4_SNRPD2_PTGER2_CXCL13_CD27_CD3D _CHRN4	0.0004 42997	0.125 565	0.08 1666	0.646 187
TAP1_CXCL9_ATP8B4_GADD45G_RAB36_CD3G_CHRN4	0.1756 4969	0.014 191	0.60 0181	0.213 46
TAP1_IL2RG_ATP8B4_TSPAN13_CD3D_CD3G_CD2	3.43E- 06	0.885 719	0.02 0476	0.600 453
CXCL9_ATP8B4_TSPAN13_SNRPD2_PTGER2_CXCL13_C D27_CD3D_CD3G_CHRN4	0.0007 98316	0.566 36	0.27 7614	0.923 941
IL2RG_CXCL9_TSPAN13_GADD45G_CD27_CD3D_CD3G_ CD2	0.6622 5637	0.092 678	0.24 1373	0.574 2
TAP1_IL2RG_SNRPD2_PTGER2_CHRN4	0.0118 11036	0.329 32	0.02 137	0.876 592
TAP1_IL2RG_TSPAN13_PTGER2_RAB36_CD3D	0.9794 90181	0.001 532	0.10 9687	0.880 971
IL2RG_CXCL9_ATP8B4_TSPAN13_SNRPD2_PTGER2_CXC L13_CD27_RAB36_CD3D_CHRN4	0.0015 9465	0.935 442	0.70 1321	0.180 591
TAP1_IL2RG_ATP8B4_TSPAN13_PTGER2_GADD45G_CD 3D_CHRN4	0.0317 7857	0.079 009	0.33 003	0.947 127
GADD45G_CD27_CD3D_CHRN4	0.2430 10301	0.362 958	0.42 0469	0.830 238
TAP1_CXCL9_ATP8B4_SNRPD2_PTGER2_CD27_RAB36_C D2_CHRN4	0.1319 19721	0.496 057	0.07 47	0.324 227
ATP8B4_SNRPD2_CD27_RAB36_CD3G_CHRN4	0.7516 60178	0.014 609	0.64 7528	0.258 444
TSPAN13_CD27_CD3G_CD2_CHRN4	0.1725 24798	0.001 568	0.04 3346	0.903 13
IL2RG_TSPAN13_SNRPD2_CXCL13_GADD45G_CD27_RA B36_CD3G_CD2_CHRN4	0.7680 32149	0.417 12	0.38 0043	0.585 033
IL2RG_CXCL9_PTGER2_RAB36_CD2_CHRN4	0.0089 64084	0.168 919	0.20 4564	0.208 088
IL2RG_CXCL9_TSPAN13_GADD45G_CD27_CD3D_CD2	0.1818 53714	0.070 823	0.72 3339	0.521 279
TSPAN13_SNRPD2_PTGER2_CD27_RAB36_CD3G_CD2_C HRN4	1.43E- 05	0.032 747	0.15 3529	0.555 61
TAP1_IL2RG_CXCL9_ATP8B4_TSPAN13_SNRPD2_PTGER 2_CXCL13_CD27_CD3D_CD3G	0.5596 86562	0.024 44	0.40 3346	0.049 698
IL2RG_CXCL9_TSPAN13_GADD45G_CD27_CD3G_CD2_C HRN4	0.0026 49005	0.947 054	0.27 003	0.718 458
TAP1_CXCL9_SNRPD2_PTGER2_CXCL13_GADD45G_RAB 36_CD3D_CHRN4	0.2374 71452	0.066 824	0.04 2627	0.142 791
IL2RG_SNRPD2_PTGER2_CXCL13_CD27_RAB36_CD3G	0.4486 19381	0.259 715	0.62 42	0.002 262

TAP1_CXCL9_ATP8B4_TSPAN13_SNRPD2_CXCL13_CD3G_CHRN B4	0.0053 04713	0.839 236	0.74 8608	0.670 826
TAP1_IL2RG_TSPAN13_PTGER2_GADD45G_CD3G	0.6761 07596	0.001 099	0.50 8695	0.918 816
IL2RG_TSPAN13_CXCL13_GADD45G_CD3G_CD2_CHRN B4	0.0342 15965	0.003 873	0.36 9019	0.710 56
IL2RG_CXCL9_TSPAN13_SNRPD2_CXCL13_CD27_CD3G_CD2_CHRN B4	0.7765 75229	0.998 96	0.45 2059	0.946 192
ATP8B4_PTGER2_CXCL13_GADD45G_CD27_CD3D_CD3G_CD2	0.0002 79788	0.506 14	0.55 9985	0.993 536
TAP1_TSPAN13_PTGER2_CD27_CD3D_CD3G	0.3271 60427	0.003 335	0.92 936	0.732 169
IL2RG_SNRPD2_PTGER2_CXCL13_CD27_RAB36_CD3D_CD3G_CD2	0.1887 94017	0.323 967	0.15 8962	0.184 245
IL2RG_TSPAN13_SNRPD2_PTGER2_GADD45G_RAB36_CD3D_CD3G_CD2_CHRN B4	0.5278 59615	0.261 226	0.70 3426	0.824 607
TAP1_CXCL9_SNRPD2_CD27_CD3D_CD3G_CD2	0.0011 01424	0.016 51	0.69 021	0.556 674
TAP1_CXCL9_ATP8B4_SNRPD2_CXCL13_GADD45G_RAB36_CD2	0.6679 96497	0.509 261	0.52 108	0.548 203
IL2RG_TSPAN13_SNRPD2_CD27_CD2_CHRN B4	0.0560 24709	0.249 056	0.82 2317	0.936 438
TAP1_TSPAN13_SNRPD2_CXCL13_GADD45G_CD27_CD3G_CD2	0.0008 33806	0.468 846	0.91 2829	0.169 108
TAP1_IL2RG_CXCL13_CHRN B4	0.7077 1959	0.798 591	0.67 921	0.412 55
IL2RG_TSPAN13_SNRPD2_PTGER2_GADD45G_CD3D	5.66E- 05	0.171 675	0.40 1694	0.493 827
PTGER2_CXCL13_GADD45G_CD3D	0.0343 80209	0.352 679	0.38 9219	0.131 744
TAP1_ATP8B4_SNRPD2_GADD45G_RAB36_CD3D_CD3G	0.3936 19449	0.887 146	0.65 436	0.036 673
TAP1_CXCL9_ATP8B4_TSPAN13_SNRPD2_GADD45G_CD27_CD3D_CD2	0.1781 10456	0.375 592	0.12 2972	0.304 586
IL2RG_CXCL9_ATP8B4_SNRPD2_GADD45G_RAB36_CD3G_CD2_CHRN B4	0.0058 02508	0.696 454	0.55 7305	0.783 179
IL2RG_CXCL9_TSPAN13_SNRPD2_PTGER2_CXCL13_GADD45G_CD3G_CD2	5.71E- 05	0.162 144	0.08 855	0.454 319
ATP8B4_SNRPD2_PTGER2_GADD45G_CD27_CD3G_CHRN B4	0.4473 08536	0.008 938	0.82 7411	0.274 816
TAP1_IL2RG_SNRPD2_CD3G_CHRN B4	0.3377 36711	0.354 856	0.86 2819	0.512 916
TAP1_IL2RG_CXCL9_ATP8B4_CXCL13_GADD45G_CD27_RAB36_CD3G	0.9830 60135	0.199 596	0.94 3656	0.580 224

IL2RG_CXCL9_TSPAN13_SNRPD2_GADD45G_CD3D	0.4422 88724	0.104 417	0.93 3708	0.080 209
CXCL9_ATP8B4_SNRPD2_PTGER2_CXCL13_GADD45G_R AB36_CHRNB4	5.47E- 06	0.037 905	0.84 3289	0.773 194
TSPAN13_CXCL13_RAB36_CD3G_CHRNB4	0.0430 89874	0.000 167	0.15 8783	0.885 834
IL2RG_ATP8B4_PTGER2_CXCL13_GADD45G_CD3D_CD2 _CHRNB4	0.4375 7645	0.799 568	0.70 8283	0.989 377
TAP1_CXCL9_TSPAN13_PTGER2_GADD45G_CD27_RAB3 6_CD2_CHRNB4	0.0071 21205	0.699 376	0.65 205	0.885 161