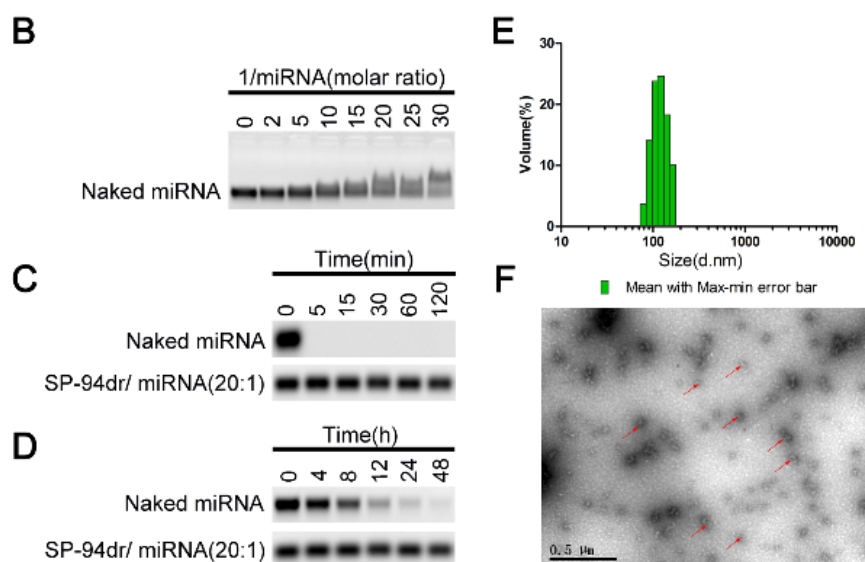
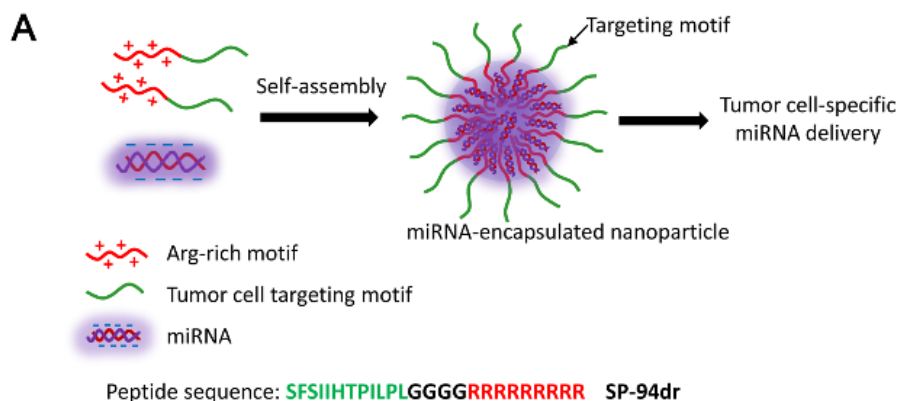


Supplementary data

Supplemental Figure 1



Supplementary Figure Legends

Supplemental Figure 1

A. Schematic representation of the binding of miRNA and polypeptides. **B.** An agarose electrophoresis assay determines the optimal ratio of polypeptides to miRNA. **C and D.** Agarose gel electrophoresis for RNase stability and serum stability. **E and F.** Electron microscopy with the best ratio of nanoparticles (nanoparticles) and particle size.