

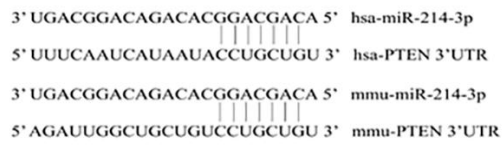
Supplementary Figure Legends

Figure S1. Identification of PTEN as a direct target of miR-214-3p. (A) Predicted miR-214-3p binding sites and the PTEN 3'-UTR in humans (hsa) and mice (mmu) by TargetScan. (B) Schematic diagram indicating the mutation of the PTEN 3'-UTR. (C) Luciferase activity of HEK-293T cells transfected with either wild-type or mutant 3'-UTR seed sequence of PTEN plus miR-214-3p mimic and mimic NC. All data are expressed as the mean \pm SD. NS, not significant ($P>0.05$), * $P<0.05$, ** $P<0.01$.

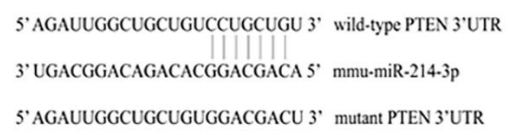
Figure S2. Uncropped western blot films for all blots.

Figure S1

A



B



C

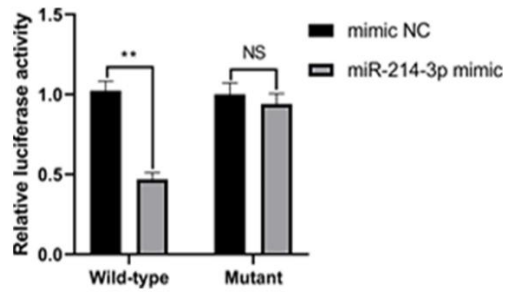


Figure S2

Figure 2F

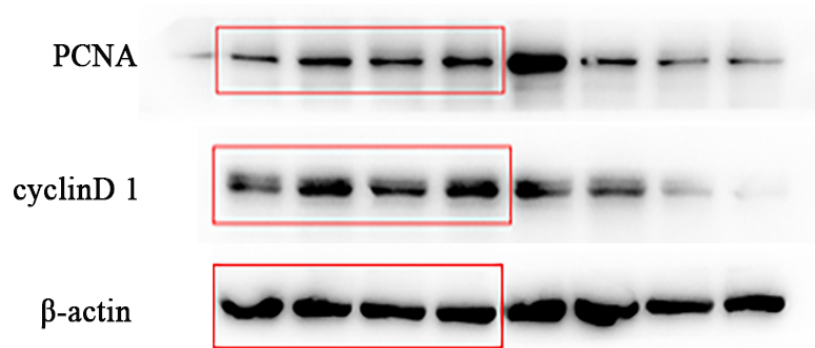


Figure 3E

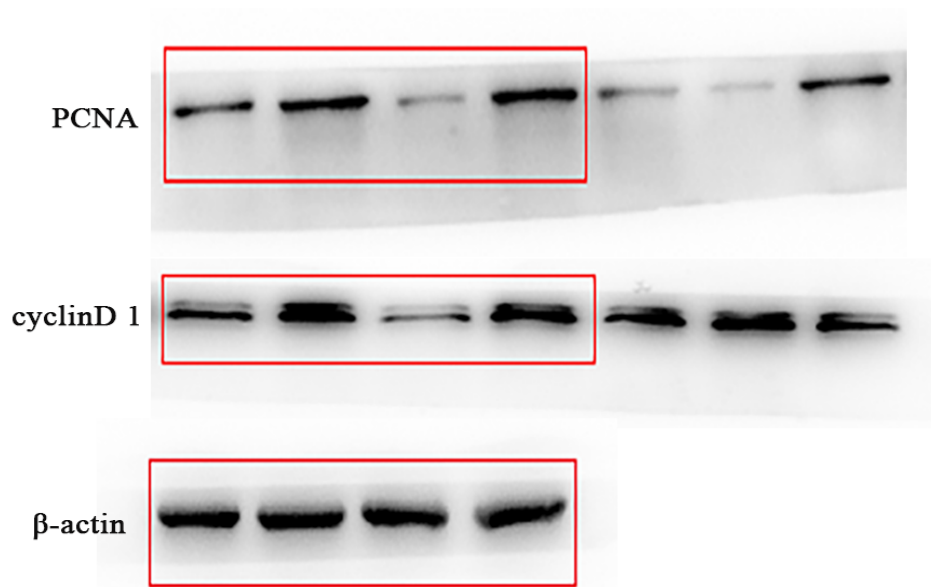


Figure 4C

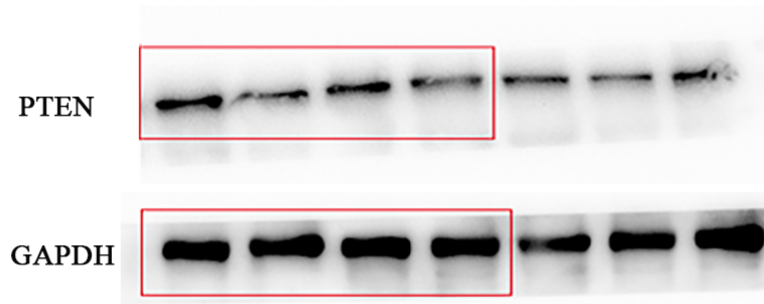


Figure 4G

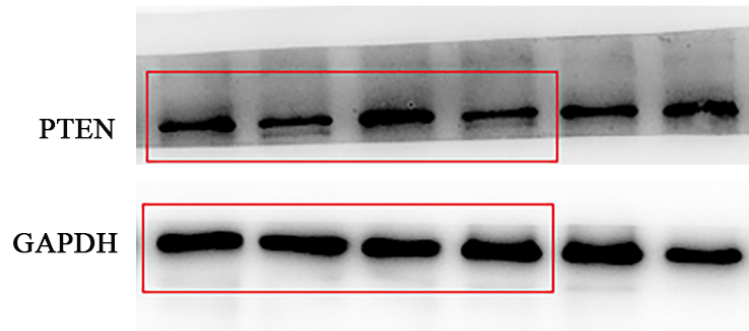


Figure 5A

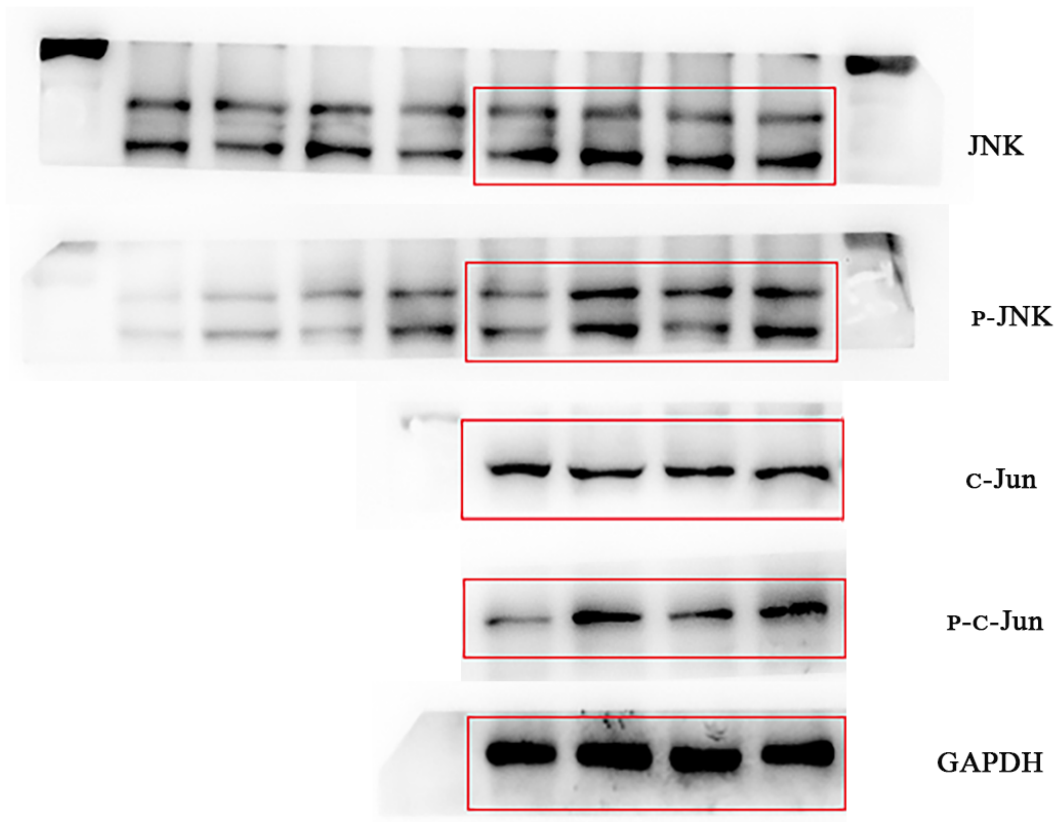


Figure 5C

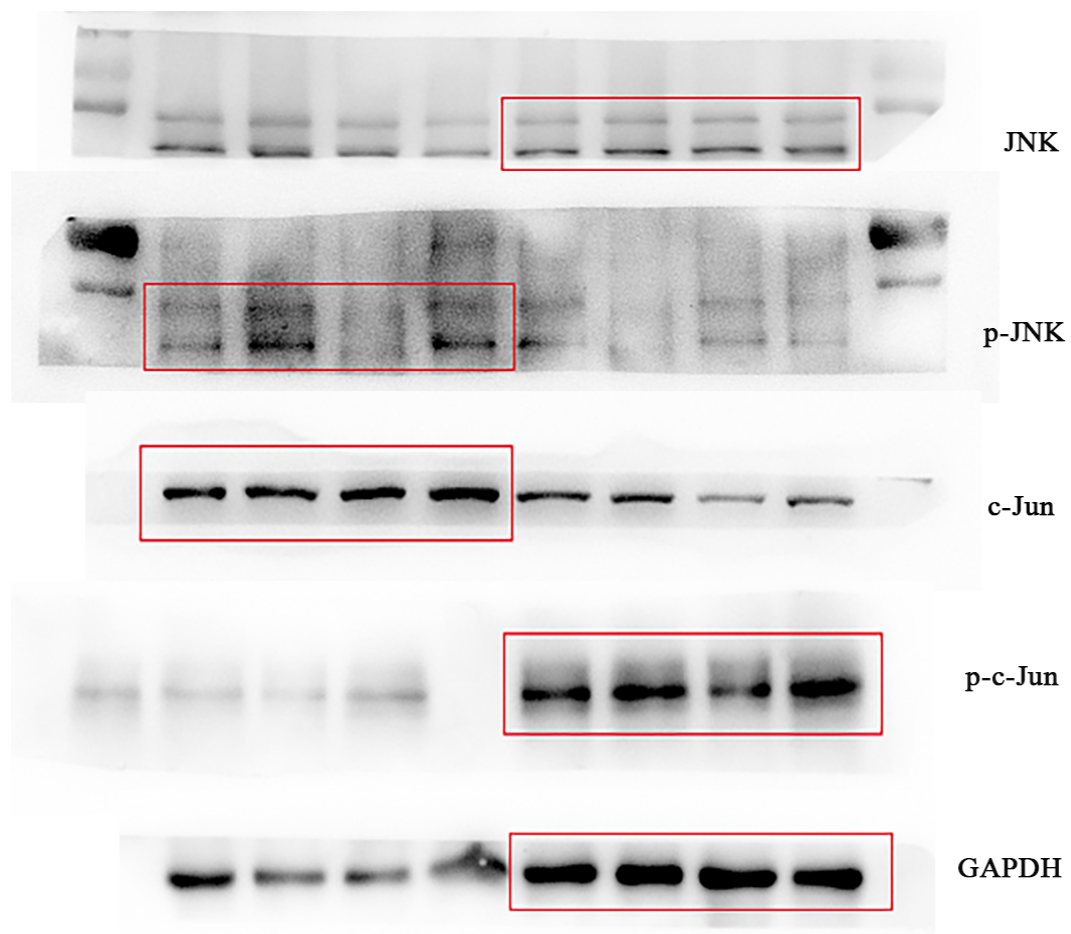


Figure 6A

