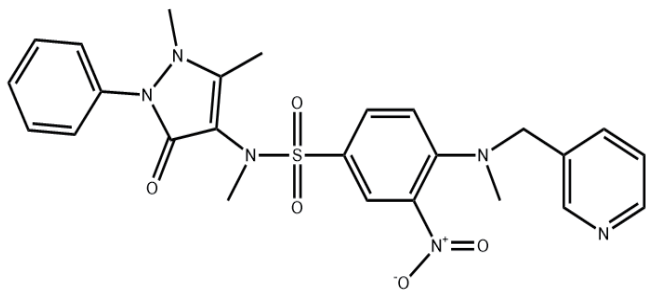


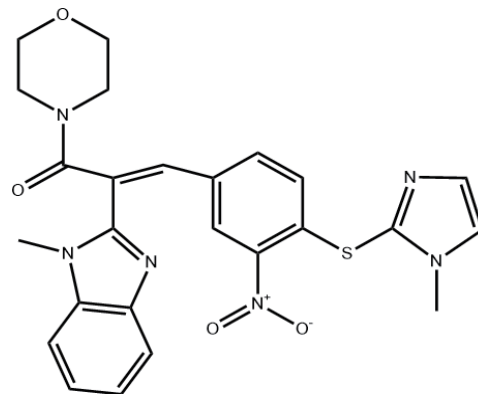
Table S1

Gene Name	Sequences of the gene-specific primer pairs
CDKN1A(Human)	5'-GATGGAACCTTCGACTTTGTCAC-3' (forward) 5'-GTCCACATGGTCTTCCTCTG-3' (reverse)
DHRS2(Human)	5'-ATCCTAAGTGTGAACGTGAAGT-3' (forward) 5'-CGCCACTACTGGATTATAAGCT-3' (reverse)
PNRC1(Human)	5'-GCAGGATTCTGTTTCATCTGAC-3' (forward) 5'-ATTTTCAACAGTGCTTCCCATC-3' (reverse)
BMF(Human)	5'-CCACCAGCCAGGAAGACAAAGC-3' (forward) 5'-GAGGAAGCCGATAGCCAGCATTG-3' (reverse)
HDAC7(Human)	5'-CTCAAACCTGGACAACGGGAAG-3' (forward) 5'-AATGAAGCTCATTCCAGATGGT-3' (reverse)
c-Myc(Human)	5'-CGACGAGACCTTCATCAAAAAC-3' (forward) 5'-CTTCTCTGAGACGAGCTTGG-3' (reverse)
CCND2(Human)	5'-TTTAAGTTTGCCATGTACCCAC-3' (forward) 5'-ACGTCTGTGTTGGTGATCTTAG-3' (reverse)
BOP1(Human)	5'-TACAACCCACCCCTGAATA-3' (forward) 5'-CTACATTCACCCTCATCTTGCG-3' (reverse)

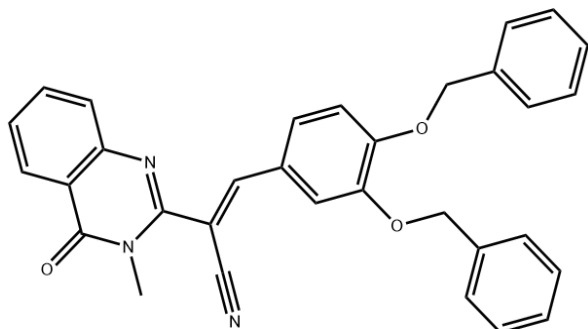
S1



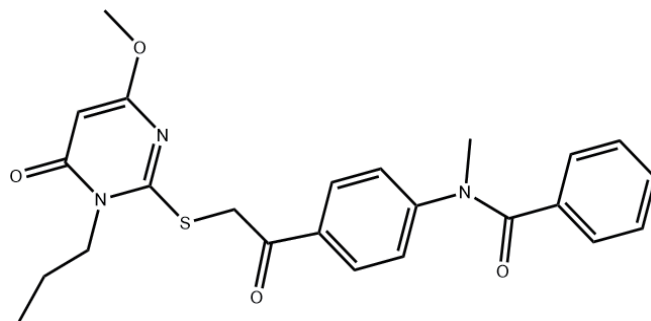
Z31216525



Z46582199



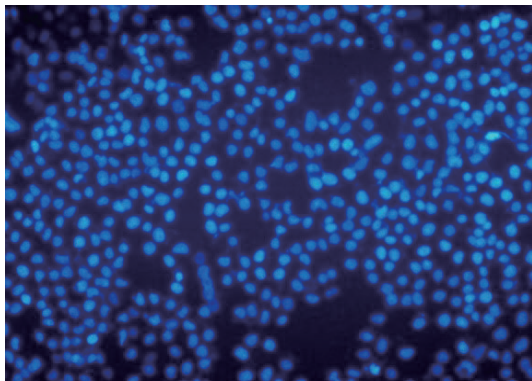
Z165155756



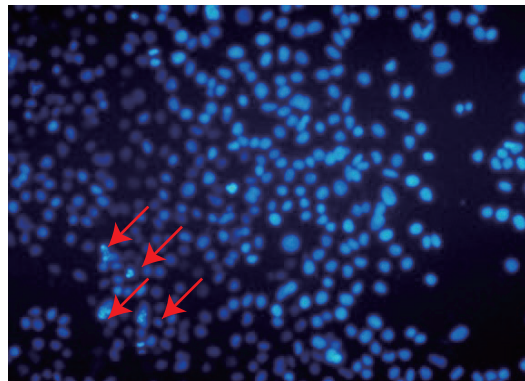
Z234820564

S2

DMSO

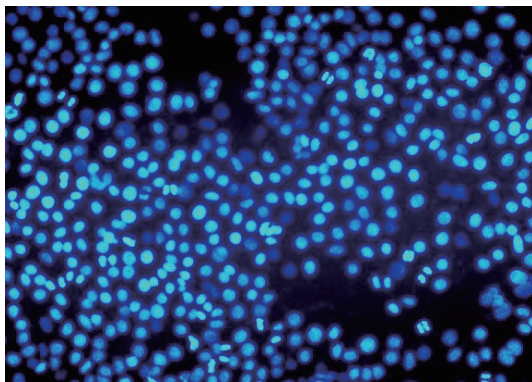


Z31216525

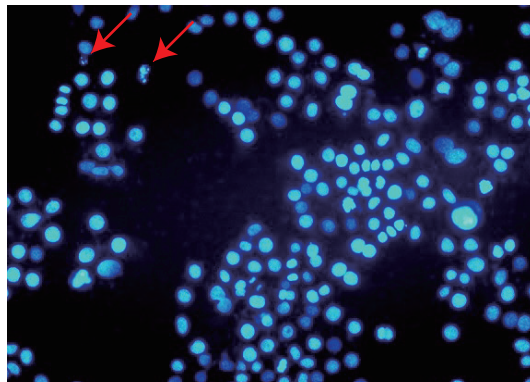


A2780

DMSO



Z31216525



Skov3

S3

