

Supplementary Figure 1

The TargetScan Mouse algorithm predicts target genes that bind to miR-136-5p and are associated with proliferation regulation.

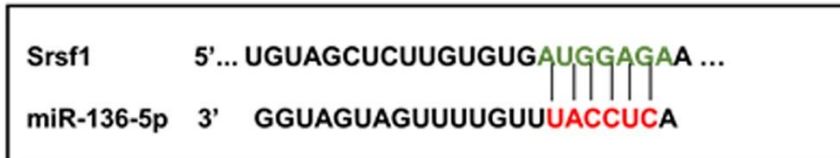
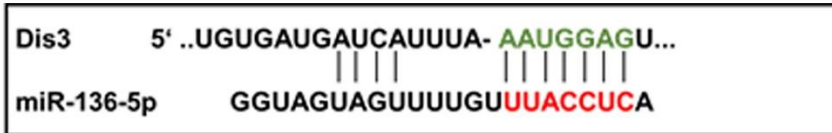
Supplementary Figure 2

LED-Red illumination device diagram

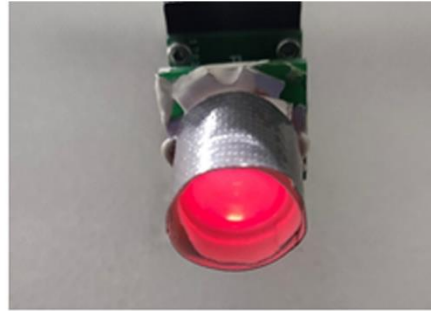
Supplementary Figure 3

The effect of overexpression of Ino80 on CM proliferation was detected using (A) EdU, (B) pH3. Arrows indicate proliferative signals, n = 3, Scale bar = 20 μm . *** $P < 0.001$ vs. CTL. The data represent the mean \pm SEM.

Supplementary Figure 1.



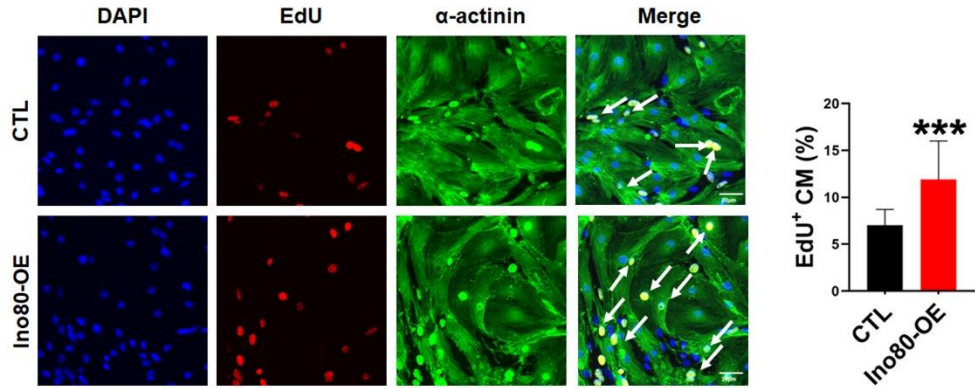
Supplementary Figure 2.



LED therapy

Supplementary Figure 3

A



B

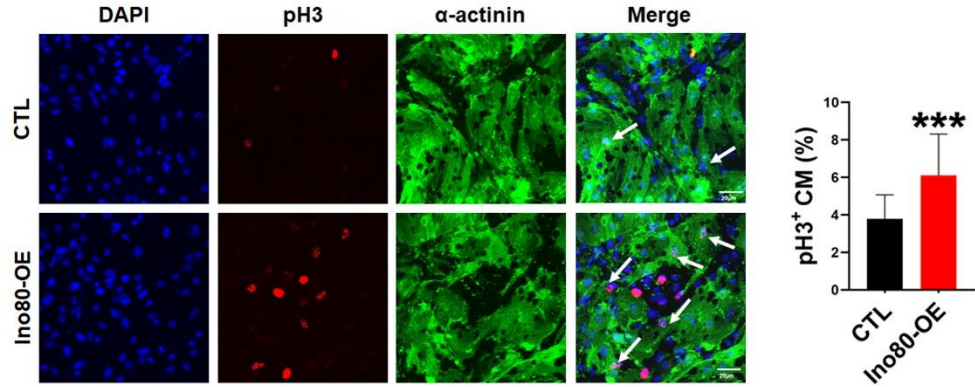


Table S1 Primer sequences

GENE	Forward primer	Reverse primer	Random primer
miR-451a	AAACCGTTACCATTA CTGAGTT	ATCCAGTGCAGGGT CCGAGG	GTCGTATCCAGTGCAGGGTCCGAGGT ATTCGCACTGGATACGACAACCTCA
miR-466i-5p	TGTGTGTGTGTGTGTG TGTG	ATCCAGTGCAGGGT CCGAGG	GTCGTATCCAGTGCAGGGTCCGAGGT ATTCGCACTGGATACGACCACACA
miR-690	AAAGGCTAGGCTCAC AAAAA	ATCCAGTGCAGGGT CCGAGG	GTCGTATCCAGTGCAGGGTCCGAGGT ATTCGCACTGGATACGACTTTGGT
miR-6933-5p	TGGCGGCAGTCAGGA TACTT	ATCCAGTGCAGGGT CCGAGG	GTCGTATCCAGTGCAGGGTCCGAGGT ATTCGCACTGGATACGACACAGGT
miR-7226-5p	GCCAGGGAAGTTGAT TGGGAAG	ATCCAGTGCAGGGT CCGAGG	GTCGTATCCAGTGCAGGGTCCGAGGT ATTCGCACTGGATACGACCCCTTC
miR-135b-5p	TATGGCTTTTCATTC TATGTG	ATCCAGTGCAGGGT CCGAGG	GTCGTATCCAGTGCAGGGTCCGAGGT ATTCGCACTGGATACGACGCCATA
miR-136-5p	CACICCAATTTGTTTG ATGATG	ATCCAGTGCAGGGT CCGAGG	GTCGTATCCAGTGCAGGGTCCGAGGT ATTCGCACTGGATACGACTGGAGT
miR-219a-5p	CCIGATTGTCCAAAC GAATTT	ATCCAGTGCAGGGT CCGAGG	GTCGTATCCAGTGCAGGGTCCGAGGT ATTCGCACTGGATACGACCAATCA
miR-21a-3p	CAACAGCAGTCGATG GGTT	ATCCAGTGCAGGGT CCGAGG	GTCGTATCCAGTGCAGGGTCCGAGGT ATTCGCACTGGATACGACCTGTTG
miR-30a-5p	TGTAAACATCCTCGA CTGGAAG	ATCCAGTGCAGGGT CCGAGG	GTCGTATCCAGTGCAGGGTCCGAGGT ATTCGCACTGGATACGACTTTACA
Ino80	GCAAAGCCCCTTTAT CTTCAGT	CCAGAGGTTTCGCC AAGCAA	